



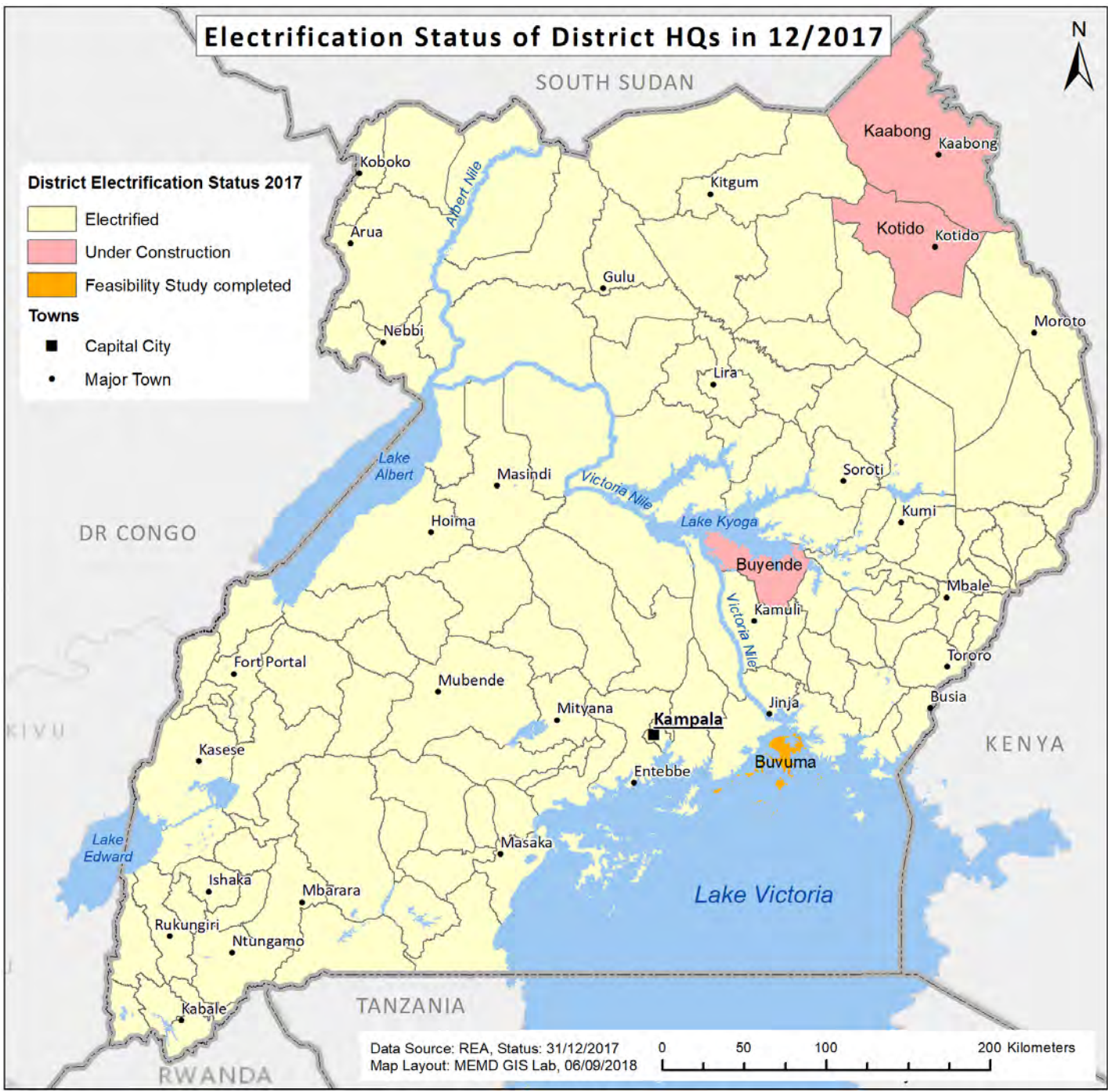
THE REPUBLIC OF UGANDA

MINISTRY OF ENERGY AND MINERAL DEVELOPMENT

2017

STATISTICAL ABSTRACT

Electrification Status of District HQs in 12/2017



FOREWORD

The Energy and Mineral Development Statistics Abstract 2017 is the eighth of its kind to be produced by the Ministry. It consolidates all the Ministry's statistical data produced during the calendar year 2017 and also contains data dating five years back for comparison purposes. The data produced in this Abstract provides progress of the Ministry's contribution towards the attainment of the commitments in the National Development Plan II and the Ministry's Sector Development Plan FY2015/16 – 2019/20.

The Ministry's Statistical Abstract is a vital document for dissemination of statistics on Energy, Minerals and Petroleum from all key sector players. It provides a vital source of evidence to inform policy formulation and further strengthens and ensures the impartiality, credibility of data/information collected.

The Ministry is grateful to all its stakeholders most especially the data producers for their continued support and active participation in the compilation of this Abstract. I wish also to thank the Energy and Mineral Development Statistics Committee for the dedicated effort in compilation of this document. The Ministry welcomes any contributions and suggestions aimed at improving the quality of the subsequent versions of this publication.

I therefore encourage you to access copies of this Abstract from the Ministry's Head Office at Amber House or visit the Ministry's website: [www. energyandminerals.go.ug](http://www.energyandminerals.go.ug).

Robert Kasande
PERMANENT SECRETARY

TABLE OF CONTENTS

FOREWORD	ii
LIST OF TABLES	vi
LIST OF FIGURES	vii
LIST OF ACRONYMS	viii
EXECUTIVE SUMMARY	x
GLOSSARY	xiv
CHAPTER ONE	1
ENERGY STATISTICS	1
1.1 UGANDA ENERGY BALANCE 2017 SUMMARIES	1
1.2 ELCTRICITY GENERATION	2
1.2.1 Installed electricity generation capacity	3
1.3 ELECTRICITY TRANSMISSION	5
1.3.1 Transmission power purchases	6
1.3.2 Transmission power sales in 2017	6
1.3.3 Transmission power losses	6
1.3.4 Transmission Route Length	7
1.4 ELECTRICITY DISTRIBUTION	8
1.4.1 Power purchases by distribution companies in GWh	9
1.4.2 Power sales by distribution companies in GWh	9
1.4.3 Power distribution losses	9
1.4.4 Power distribution tariff	10
1.5 ATOMIC ENERGY	10
CHAPTER TWO	12
PETROLEUM STATISTICS	12
2.1 PETROLEUM EXPLORATION DEVELOPMENT AND PRODUCTION (UPSTREAM)	12
2.1.1 Petroleum resources in the Albertine Graben	13
2.1.2 Investments in the upstream petroleum subsector in 2017	13
2.2 PETROLEUM SUPPLIES AND DISTRIBUTION (DOWNSTREAM)	15
2.2.1 Petroleum product imports	15
2.2.1.1 Petroleum product imports	15
2.2.1.2 Annual Petroleum imports in litres	16
2.2.2 Monthly import bill and Government revenue 2017	17
2.2.3 Market shares of Oil Marketing Companies in 2017	18
2.2.4 Herfindahl Hirschman Index (HHI)	20
2.2.5 Prices of petroleum products	21
2.2.5.1 Monthly local pump prices of petroleum products in UGX (2017)	21
2.2.5.2 Monthly International Crude oil prices -\$/Bbl for 2017	22

2.2.5.3 Monthly International refined product prices in US\$/Gallon (2017)	23
CHAPTER THREE	25
MINERAL STATISTICS	25
3.0 MINERAL PRODUCTION	25
3.1 Quarterly Mineral Production in Tonnes (2017)	25
3.2 Mineral imports.....	26
3.3 Mineral Exports	26
3.4 NTR assessed and collected in 2017.....	27
3.5 Mineral licensing	28
STATISTICAL APPENDICES	29
Appendix 1: Power	29
1.1: 2017 Uganda Energy Balance.....	29
1.2: Energy utilities of Uganda in 2017	30
1.3: District Electrification Status 2017	31
1.4: Bujagali HPP	32
1.5: Ishasha SHPP	33
1.6: Power Generated, Exported and used at Kakira	34
1.7: Licenced Power Projects in 2017.....	34
1.8: Electricity Generation Projects in Uganda.....	35
1.9: Planned Electricity Generation Capacity per plant	39
1.10: Monthly UETCL electricity purchases across all suppliers in MWh	41
1.11: UETCL monthly electricity sales in MWh (2017)	42
1.12: Monthly Electricity exports in MWh (2017)	42
1.13: Operational Transmission Lines 2017	43
1.14: Transmission Lines under Construction 2017	45
1.15: Transmission Substations (Status: December 2017).....	46
1.16: Electricity Purchases by Distribution Companies in MWh (2017).....	47
1.17: Electricity Sales by Distribution Companies in MWh (2017)	48
1.18: Number of Customers (2014-2017)	48
1.19: Number of Employees in various distribution companies (2014-2017).....	48
1.20: Licenses to Possess and Use Radiation Sources for 2017	49
Appendix 2: Petroleum.....	56
2.1: Compiled Oil Marketing Company (OMC) imports for 2017	56
2.2: Prospective and infrastructure map of Uganda for oil and gas	61
Appendix 3: Minerals.....	62
3.1: Monthly Mineral Production in Tonnes (2017)	62
3.2: NTR assessed and collected	63
3.3: Mineral licensing status.....	66

3.4: Titles of Mineral rights as of 31 st December 2017	68
3.5: Value of mineral exports as per permits issued for minerals produced in 2017	72
Appendix 4: Statistics Committee Members of the Energy and Mineral Sector	74

LIST OF TABLES

Table 1.1: Energy and Electricity Consumption Per capita	1
Table 1.2: Primary Energy Supply and Consumption.....	1
Table 1.3: Energy consumption by sector	1
Table 1.4: Installed Capacities for Electricity Generation Companies in Uganda 2017	3
Table 1.5: UETCL power purchases and sales in GWh	6
Table 1.6: Transmission route length in km (2013 - 2017)	7
Table 1.7: Power purchases and sales by distribution companies (2013 - 2017)	9
Table 1.8: Umeme power distribution tariffs in UGX (2013 - 2017).....	10
Table 1.9: Licenses and permits issued by Atomic Energy Council (2013 - 2017)	11
Table 2.1: Petroleum resources in the Albertine Graben as at December 2017	13
Table 2.2: Investments in the petroleum sub sector in 2017	14
Table 2.3: Monthly Imports of petroleum products in litres (2017).....	15
Table 2.4: Annual petroleum imports in litres (2013 - 2017)	16
Table 2.5: Monthly import bill and Government revenue in 2017	17
Table 2.6: Market shares of Oil Marketing Companies in 2017	19
Table 2.7: Herfindahl Hirschman Index	20
Table 2.8: Local petroleum product pump prices in UGX.....	21
Table 2.9: Crude oil price in \$/barrel	22
Table 2.10: Monthly International refined product prices in US\$/Gallon (2017).....	23
Table 3.1: Quarterly Mineral Production in Tonnes (2017)	25
Table 3.2: Value of Mineral Imports as per Permits issued (July – Sept 2017)	26
Table 3.3: Value of mineral Exports in 2017 (Jan - Dec)	27
Table 3.4: Non Tax Revenue assessed and collected in UGX (2017)	27
Table 3.5: Status of mineral licensing as at 31st December 2017	28

LIST OF FIGURES

Figure 1.1: Map showing power generation plants operational and under construction in 2017	2
Figure 1.2: Electricity generation capacity in 2017	4
Figure 1.3: Transmission lines and substations in 2017	5
Figure 1.4: Power transmission purchases, sales and losses (2013-2017)	6
Figure 1.5: Map showing operational distribution lines in 2017	8
Figure 1.6: Power distribution purchases, sales and losses (2013 - 2017)	9
Figure 1.7: Licenses issued by Atomic Energy Council (2013 - 2017)	11
Figure 2.1: Map showing the status of licensing in the Albertine graben of Uganda.....	12
Figure 2.2: Level of investments in the oil and gas sector by 2017	14
Figure 2.3: Monthly imports of petroleum products in 2017	16
Figure 2.4: Annual imports of petroleum products (2013-2017)	17
Figure 2.5: Import bill for petroleum products in 2017	18
Figure 2.6: Government revenue generated from importation of petroleum products in 2017	18
Figure 2.7: Market shares of oil marketing companies in 2017	19
Figure 2.8: Domestic prices for petroleum products in 2017	22
Figure 2.9: Prices of crude oil in 2017.....	23
Figure 2.10: Prices of international refined petroleum products in 2017	24
Figure 3.1: Quantity of minerals produced in 2017.....	26
Figure 3.2: Non Tax Revenue assessed and collected in 2017.....	28

LIST OF ACRONYMS

BECS	Bundibugyo Energy Co-Operative Society
CNOOC	China National Offshore Oil Corporation Uganda Limited
DGSM	Directorate of Geological Survey and Mines
DOP	Directorate of Petroleum
DRC	Democratic Republic of Congo
EA	Exploration Area
EL	Exploration License
EMDSSPS	Energy and Mineral Development Sector Strategic Plan for Statistics
EMS	Energy and Mineral Sector
ERA	Electricity Regulatory Agency
ERD	Energy Resources Directorate
ERT	Energy for Rural Transformation
FESL	Ferdsult Engineering Services Limited
HHI	Hierfindahl Hirschman Index
IDA	International Development Association
IDO	Industrial Diesel Oil
IPP	Isolated Power Plant
KCCL	Kasese Copper Cobalt Company Limited
KIL	Kilembe Investments Limited
KIS	Kalangala Infrastructure Services Limited
KML	Kilembe Mines Limited
KPLC	Kenya Power and Lighting Company
KRECS	Kyegegwa Rural Electricity Cooperative Society Limited
KSW	Kakira Sugar Works
kV	Kilo Volts
kWh	Kilo Watt Hours
LL	Location License
MDL	Mineral Dealers License
MEMD	Ministry of Energy and Mineral Development
MMBBL	Million Barrels (oil reserves)
MPS	Ministerial Policy Statement
MW	Mega Watt
MWh	Mega Watt Hours
NSS	National Statistical System

NTR	Non-Tax Revenue
PACMECS	Pader Abim Community Multipurpose Electric Cooperative Society Limited
PL	Prospecting License
PNSD	Plan for National Statistical Development
PSD	Petroleum Supply Department
REA	Rural Electrification Agency
SEG	Society of Exploration Geophysicists
SPE	Society of Petroleum Engineering
SPPAD	Sectoral Planning and Policy Analysis Department
SSPS	Sector Strategic Plan for Statistics
STOIP	Stock Tank Oil Initially In Place
TANESCO	Tanzania Electricity Supply Company
TOE	Tonnes of Oil Equivalent
UBOS	Uganda Bureau of Statistics
UEDCL	Uganda Electricity Distribution Company Limited
UEGCL	Uganda Electricity Generation Company Limited
UETCL	Uganda Electricity Transmission Company Limited
UGX	Uganda Shillings
URA	Uganda Revenue Authority
US\$	United States Dollar
WENRECO	West Nile Rural Electrification Company
“..”	Not Applicable/Not Available

EXECUTIVE SUMMARY

The 2017 statistical abstract is an annual publication that provides statistics on indicators generated by the Energy, Petroleum, and Mineral Sub-Sector. This edition updates each indicator with 2017 data while concurrently giving a five year overview in some cases.

The document contains three major chapters on energy, petroleum and minerals. These are preceded by a list of acronyms and a glossary of definitions for the reader's guidance. There are also appendices that expound on the summarized data within the chapters.

Chapter one presents statistics on energy generation, transmission, distribution and atomic energy; chapter two presents statistics on petroleum exploration, production, supplies and distribution while chapter three presents statistics on minerals produced, imported and exported in 2017.

Energy

Uganda Energy Balance 2017 Summary

At a population of 37.8 million people in 2017 (Source: UBOS);

- Energy consumption per capita in Uganda was 368.2 kgOE/capita.
- Electricity consumption per capita was 74.4 kWh/capita.

Installed electricity generation capacity

- The total installed electricity generation capacity stood at 974.84 MW.
- Of this, 789.24 MW was contracted by UETCL.
- 65% (635 MW) was by large hydro plants.
- 14% (139 MW) was by thermal plants.
- Other generation plant categories include; small hydro (82.94 MW), co-generation (96.2 MW), solar (20.1 MW) and hybrid (1.6 MW) plants.

Transmission power purchases

- Total transmission power purchases stood at 3,867 GWh.
- This was an increase of 9.5% from the previous year, 2016.
- Power purchased by the transmission company increased by 27.2% between 2013 and 2017.

Transmission power sales in 2017

- A total of 3,716 GWh were sold by the transmission company in 2017.
- This represents a 9.6% increase from the previous year (2016).
- There was also a 26.7% increase between 2013 and 2017.

- On average, the company sold 3,271 GWh per annum.

Transmission power losses

- The power lost during transmission was 3.9%.
- This was the case in both 2016 and 2017.
- This indicates a 0.4% increase in transmission power losses between 2013 and 2017.

Transmission Route Length

- The transmission route length stood at 35 km (66 kV lines), 1,442 km (132 kV lines) and 150 km (220 kV lines).
- A total of 1,333.8 km of transmission lines are under construction
- 533 km of 132 kV lines, 552.5 km of 220 kV lines and 248.3 km of 400 kV lines are expected onto the transmission network when complete.

Power purchases by distribution companies in GWh

- Power purchased by distribution companies totalled to 3,406 GWh.
- This was a 5% increase from the previous year (2016).

Power sales by distribution companies in GWh

- Power sales by distribution companies totalled to 2,815 GWh.
- This implies a 7.6% increase from 2016 to 2017.
- There was also a 33% increase in sales between 2013 and 2017.

Power distribution losses

- The proportion of power lost during distribution was 17.4%.
- These losses translate into a 1.9% reduction from 2016 to 2017.

Power distribution tariff for umeme

Year	Quarter	Domestic	Commercial	Medium Industrial	Large Industrial	Street Lights	Extra Large
2017	Q4	685.6	619.1	568	368.1	669.5	364.6
2017	Q3	686	619.6	568.8	369	670	365.8
2017	Q2	687.1	620.9	569.7	370.2	671.2	366.9
2017	Q1	696.9	629	577.8	376.3	679.7	372.8

Atomic Energy

The Atomic Energy Council (AEC) issued various licenses in 2017;

- 185 possess and use licenses,
- 9 transport permits,
- 13 import permits, and
- 3 sell/hire permits.

Petroleum

Petroleum resources in the Albertine Graben

- The STOIP for all oil fields totalled to 6,053 million barrels.
- The corresponding resources totalled to 1,383 million barrels by end of 2017.

Investments in the petroleum sub sector in 2017

- Total investments in the petroleum subsector amounted to USD 155.568 million.
- The cumulative investment amounted to USD 3.236 billion.

Petroleum product imports

Petroleum products imported into the country in 2017 amounted to;

- 894,072,306 litres for PMS,
- 56,526,813 litres for BIK,
- 945,083,916 litres for AGO, and
- 125,961,954 litres for JET A1.
- On average, the country imported 74,506,026 litres, 4,710,568 litres, 78,756,993 litres and 10,496,830 litres of PMS, BIK, AGO and JET A1 per month, respectively.

Monthly import bill and Government revenue from petroleum dealings in 2017

- The value of the import bill was UGX 5,122 billion.
- The government revenue collected totalled UGX 604 billion.
- On average, UGX 427 billion in import bill and UGX 50 billion in government revenue were recorded per month in 2017.

Market shares of Oil Marketing Companies in 2017

- The petroleum products market in Uganda had a total of 65 licensed oil marketing companies in 2017.
- Vivo Energy had a market share of 18% followed by Total Uganda limited with a market share of 13%.

Monthly local pump prices of petroleum products in 2017

- Local petroleum pump prices ranged between UGX 3,294 and UGX 3,433 per litre for PMS; UGX 2,781 and UGX 3,070 per litre for AGO; and UGX 2,428 and UGX 2,666 per litre for BIK.
- In January, the country recorded the lowest prices for PMS at UGX 3,294 per litre and AGO at UGX 2,781 per litre.
- In August, the lowest BIK price was recorded at UGX 2,428 per litre.
- Highest price for PMS was recorded in December at UGX 3,433 per litre.
- Highest prices for BIK and AGO were recorded in March at UGX 2,666 and UGX 3,070 per litre, respectively.

Monthly International Crude oil prices -\$/bbl for 2017

Crude oil prices on the world market in 2017 ranged from USD 45.21 to USD 61.45 per barrel for OPEC BASKET; USD 45.44 to USD 57.36 per barrel for NYMEX light swt; and USD 47.80 to USD 62.89 per barrel for IPE BRENT.

Monthly International refined product prices in US\$/Gallon (2017)

The Nymex Gasoline refined product prices oscillated between USD 426 and USD 560 per gallon while Nymex Heating Oil was between USD 143.14 and USD 192.44 per gallon in the year 2017.

Minerals

Quarterly Mineral Production in Tonnes

- Minerals produced in 2017 totalled to 2.18 million tonnes.
- Limestone and pozollana accounted for 56.5% and 36.4% of total mineral production, respectively.

Mineral imports

- Mineral importation only occurred from July to September.
- Gold, worth UGX 275 billion, was the only mineral import in 2017.

Mineral exports

- Minerals exported in 2017 amounted to 6,264.8 tonnes, worth UGX 14 billion.
- The highest mineral exports were gold valued at UGX 8.56 billion followed by wolfram valued at UGX 3.86 billion.

NTR assessed and collected in 2017

- Non Tax Revenue (NTR) collected from mineral dealings totalled to UGX 13.478 billion.
- Royalties totalled to UGX 11.129 billion,
- Exploration license fees and rents were valued at UGX 991.39 million,
- Mining lease fees and rents were valued at UGX 893.24 million,
- Mineral dealer's license fees were valued at UGX 297 million.

Mineral licensing

The mineral licensing status by close of the year 2017 stood at 375 Exploration Licenses, 4 Retention Licenses, 71 Location Licenses, 39 Mining Leases and 16 Mineral Dealers.

GLOSSARY

ENERGY

Bio fuels

These are liquid fuels (alcohols and oils) generated from plants or plant products such as sweet sorghum stalks, sugarcane molasses, soya beans, ground nuts, corn, castor, jatropha, and candle nut.

Bio gas

This is the gas generated through break down of organic biodegradable material such as (cow dung, pig dung, chicken droppings, human waste, plant residues and human excretor) through anaerobic process (air tight environment). The gas produced can be tapped into pipe line and used for cooking with a biogas stove or for lighting. The gas can also be cleaned of impurities and feed into a bio gas generator to produce electricity.

Biomass Energy

Energy derived from living things mainly of plant and animal origin for example fire wood, charcoal, agro residues (e.g. saw dust, coffee husks, maize cobs, wood chips, rice husks, etc.) and animal waste. Biomass can be used for cooking, heating, and electricity generation in homes, industries, and institutions.

Briquettes

Are compacted loose biomass residue, used to replace charcoal (carbonized briquettes) and fire wood (un-carbonized briquettes).

Electricity A form of energy resulting from the existence of charged particles (such as electrons or protons), either statically as an accumulation of charge or dynamically as a current.

Electricity Loss

The amount of electricity generated but not accounted for. As electricity moves through power lines, a proportion of energy is lost as heat due to the resistance in the lines. Another proportion of electricity could be lost due to power theft or vandalism.

Electricity Use per Capita

The average amount of electricity used per person per year.

Electricity Tariff

The price of a unit of electricity consumed.

Electricity Coverage

The percentage coverage of the electricity grid in the country.

Energy

Power derived from the utilization of physical or chemical resources, especially to provide light and heat or to work machines.

Energy Balance

The total supply, consumption and losses of energy commodities (fuels) in a country. The energy balance allows to see the relative importance of the different fuels in their contribution to the economy.

Energy Demand Forecast

The total predicted demand for energy in a country at a specified period of time. The energy is categorised as firewood energy, charcoal energy, electricity energy, petroleum products and residues.

Energy intensity of GDP at constant Purchasing Power Parities

The ratio of primary energy consumption to Gross Domestic Product (GDP) measured in constant UG Shillings at purchasing power parities. It measures the total amount of energy necessary to generate one unit of GDP.

Energy to GDP Ratio

The total value of energy produced as a proportion of the national GDP.

Gasification

Is a process that converts based carbonaceous materials into producer gas (carbon dioxide, carbon monoxide and hydrogen gas) through combustion at high temperature with controlled amount of oxygen. The gas can be feed into gasifier stoves for thermal use or purified and feed into generator for electricity generation.

Geo-thermal power

The power generated from heat energy generated and stored in the Earth.

Hydro-electric power

The electric power generated from flowing water.

Installation

A system of machinery or other apparatus set up for energy use.

National Grid Electrification Rate

Percentage of households with access to electricity from the National Grid.

Power Distribution

Electric power distribution is the final stage in the delivery of electric power; it carries electricity from the transmission system to individual consumers.

Power Transmission

Movement of electricity through synchronised network of high voltage lines, transformers, switches from point of generation to point of distribution

Total energy production

The balance of primary production, external trade, marine bunkers and stock changes in a country.

Total primary energy production

The quantity of natural energy resources ("*primary energy sources*") extracted or produced in a country. Primary energy is an energy form found in nature that has not been subjected to any conversion or transformation process. Primary energy fuels are Oil, Coal, Peat, Natural Gas, Nuclear, Hydro, Biofuels, Geothermal, Solar and Wind.

PETROLEUM**API Gravity**

A scale reflecting the density of a fluid such as crude oil, water or natural gas.

Aviation Fuel

A specialised type of petroleum-based fuel used to power aviation gas-turbine engines.

Barrel

A common measure of crude oil containing 42 US.gal or 0.15899m³.

Basin

A general term for any large area of tectonic origin with a thick accumulation of sedimentary rocks.

Block means acreage which may be stratigraphically delineated as provided for in schedule III to the Petroleum (EDP) Act, 2013 and includes part of a block as constituted.

Conversion means changing the natural gas component, without altering the molecular structure of the natural gas entered into the process through the use of pressure or temperature.

Crude oil means naturally occurring, flammable liquid consisting of a mixture of hydrocarbons and other organic compounds that are found beneath the earth's surface;

Currency point is equivalent to twenty thousand shillings;

Discovery area means the block or blocks in an exploration area comprising the geological feature as outlined by the relevant geological or geophysical data in which a discovery is located;

Drilling means the perforation of the earth's surface for purposes of making a discovery, establishing the extent of a discovery, or production of the discovered petroleum;

Exploration means the undertaking of activities, whether on land or water, for the purpose of discovering petroleum and includes geological, geophysical and geochemical surveys, and drilling of wells for the purpose of making a discovery and its appraisal; Petroleum (Exploration, Development and Act 3 Production) Act 2013

Exploration Area

Land covered by or acquired under an exploration license.

Field means a geological structure or feature which hosts one or more reservoirs from which petroleum production may be commercially undertaken through a defined set of facilities;

Herfindahl Hirschman Index (HHI) is an index used to measure company market share concentration within an industry. It is calculated by squaring the market share of each firm competing in a market, and then summing the resulting numbers. This index can range from close to zero to 10,000.

Hydrocarbons means a naturally occurring organic chemical compound or a mixture of such compounds made of hydrogen and carbon, generated in the subsurface under the influence of temperature;

Inventory means the amount of petroleum commodities or petroleum products calculated to be in a storage tank after considering the initial volume of petroleum commodities or petroleum products in the storage tank and the amount of petroleum commodities or petroleum products added to and removed from the storage tank during a specified period of time;

Kerosene

Fuel used as an illuminant for lighting and domestic purposes for example cooking.

License means a license issued under Petroleum (EDP) Act 2013;

Licensed area means the area subject to a license issued under Petroleum (EDP) Act 2013;

Licensee means a person to whom a license is granted under Petroleum (EDP) Act 2013;

Liquid Petroleum Gas (LPG)

These are hydro-carbons which are gaseous under conditions of normal temperature and pressure, but are liquefied by compression or cooling to facilitate storage, handling and transportation.

Natural gas means all petroleum which is in a gaseous state at 15°C atmospheric pressure, including wet gas, dry gas and residue gas remaining after the recovery of liquid hydrocarbons;

Oil Exploration

Petroleum or crude oil is a naturally occurring flammable liquid consisting of a complex mixture of hydrocarbons of various molecular weights and other liquid organic compounds that are found in geologic formations beneath the earth's surface. Crude oil includes all liquid hydrocarbons to be refined from natural gas (NGL), and semi-refined products.

Exploration is the art of searching or travelling around a terrain for purposes of discovering resources, information or new slave races.

Oil Well

A hole drilled or dug in the earth from which petroleum flows or is pumped.

i. Appraisal oil Well

A well being drilled to define the extent of an already discovered oil or gas accumulation.

ii. Exploration oil Well

A well being drilled with the object of discovering a new oil or gas accumulation or for the purposes of obtaining stratigraphical information which may assist in the discovery of a new oil or gas accumulation.

iii. Stripper oil well

An oil well whose production has declined to less than ten barrels a day.

iv. Production Well

A development well specifically for the extracting of reservoir fluids.

v. Suspended Well

A well in which all operations have been suspended before completion, with the intention of resuming operations at a later date.

Operator means a licensee or any other entity executing on behalf of one or several licensees, the day to day management of petroleum activities;

Petroleum commodities means produced petroleum which is marketable for sale, can be used as a feedstock for refining or conversion to petroleum products or direct consumption, including energy production;

Petroleum means—

- (a) any naturally occurring hydrocarbons, whether in gaseous, liquid or solid state;
- (b) any naturally occurring mixture of hydrocarbons, whether in a gaseous, liquid or solid state; or
- (c) any naturally occurring mixture of one or more hydrocarbons, whether in a gaseous, liquid or solid state and any other substances and includes any petroleum as defined by paragraphs (a), (b) or this paragraph that has been returned to a natural reservoir, but does not include coal, shale, or any substance that may be extracted from coal or shale;

Petroleum products means all products resulting from refining or conversion of petroleum commodities;

Production means all activities relating to recovering petroleum from a reservoir and preparing it for evacuation from the field;

Refining means the transformation of crude oil into finished or partly finished petroleum products using different processes of distillation, cracking and reforming or other methods of altering the molecular structure of the crude oil;

Reservoir means a naturally occurring accumulation of petroleum in a geological unit limited by rock characteristics, structural or stratigraphic boundaries, contact surface between petroleum and water in the formation, or a combination of these, so that all the petroleum comprised in the geological unit is in pressure communication through liquid or gas;

Spill means a release of petroleum commodities or petroleum products into the environment from or out of a facility;

STOIP or Stock Tank Oil Initially In Place means the total amount of crude oil present in a hydrocarbon reservoir before the commencement of any production. It is also known as Oil In Place (**OIP**) or Stock Tank Original Oil In Place (**STOOIP**).

Storage tank means a tank used or designed to be used for the storage of petroleum commodities or any one petroleum product of an aggregate capacity of 50,000 litres or more;

Suspended well means a well which has been completed with the intention of resuming operations at a later date;

Well means a borehole obtained by the perforation of the earth's surface using conventional drilling either in a vertical, inclined or horizontal configuration, and drilled with the aim of making a discovery, an appraisal or production of petroleum.

MINERALS

Beacon

A post with a notice board fixed on it erected for demarcating an area subject to mineral right.

Goldsmith's License

A license authorizing manufacturing of any article from any precious mineral or from substance containing any precious mineral.

Holder

A person to whom a license is granted under the mining laws, and includes every person to whom that license is lawfully transferred or assigned.

Location License

A license for prospecting and mining operations which do not involve substantial expenditure and use of specialised technology. Currently "substantial expenditure" means expenditure in excess of ten million Uganda shillings necessary to bring a mine into production.

Mine

Any place, excavation or working area where operations connected with mining are carried out.

Mineral

An element or chemical compound that is normally crystalline or amorphous and that has been found as a result of geological processing. Minerals include: building and industrial minerals.

i. Building Mineral

Any rock, clay, gravel, laterite, murrum, sand, sandstone and slate, mined by a person from land owned or lawfully occupied for building, or mined by a person for his or her own use for road making, and includes any other minerals that may be declared as building minerals by the state.

ii. Industrial Minerals

Minerals that are commercially mined by a person for use in Uganda or industrially processed into finished or semi-finished products, and includes such other minerals as the Government may from time to time declare by notice published in the Gazette, to be industrial minerals. Examples of such minerals are barite, rock, clay, dolomite, feldspar, granite, gravel, gypsum, laterite, limestone, mica, magnesite, marble, phosphate rock, sand, sandstone, slate and talc.

Mineral Dealer's License

A license authorizing buying and selling of minerals.

Mineral Deposit

A mass of naturally occurring mineral material of economic value.

Mineral Processing

Procedures, such as dry and wet crushing and grinding of ores or other products containing minerals to raise concentration of the substance mined.

Mineral Product

A substance derived from an ore by mining or processing.

Mineral Rent

Rent payable by an applicant upon being granted a mining lease, location license, retention license or exploration license per unit area and thereafter annually on the anniversary of the grant until termination of the mineral right concerned. While *total mineral rent* is the total amount of money payable annually by an applicant for, or the holder of, a mining lease, a location license retention license or an exploration license.

Mineral Right

It is the right of the owner to exploit mine and/or produce any or all of the minerals lying below the surface of the property.

Mining

It is the extraction of valuable minerals or other geological materials from the earth.

Mining Area

Land subject to a mining lease.

Precious Minerals

These include precious stones namely: *agate, amber, amethyst, cat's eye, chrysolite, diamond, emerald, garnet, opal, sapphire, turquoise* and all other substances of a nature similar to any of them; and precious metals, namely gold, silver, platinum, iridium, osmium, palladium, ruthenium, rhodium, or any other rare earth elements.

Prospect

The act of searching for minerals and mineral deposits, including any operations to test the mineral bearing qualities of any land or mining area.

Retention Area

Land subject to a retention license.

Retention License

A license applied for by a holder of an exploration license on grounds that identification of a mineral deposit within the exploration area is potentially of commercial significance and such mineral deposit cannot be developed immediately by reason of adverse market conditions, economic factors and other factors beyond their reasonable control, which are of temporary nature.

Royalty

An amount payable on the gross value of the minerals based on the prevailing market price of the minerals at such rates as prescribed in the Mining Regulations, 2004. Royalty is payable on minerals obtained in the course of prospecting, exploration, mining or mineral beneficiation operations.

CHAPTER ONE

ENERGY STATISTICS

This section provides statistics on power generation, transmission, distribution, atomic energy and new and renewable energy.

1.1 UGANDA ENERGY BALANCE 2017 SUMMARIES

Table 1.1: Energy and Electricity Consumption Per capita

Indicator	
Population (2017 UBOS prediction):	37,838,900
Energy Consumption per capita (kgOE/capita):	368.2348267
Electricity Consumption per Capita (kWh/capita):	74.37995967

Source: 2017 Uganda Energy Balance (Appendix 1.1)

Table 1.2: Primary Energy Supply and Consumption

Category	Primary Energy Supply (TPES)	Energy consumption
	%	%
Biomass	90.1	86.4
Oil products	8.5	11.9
Electricity	1.4	1.7
Total	100	100

Source: 2017 Uganda Energy Balance (Appendix 1.1)

Table 1.3: Energy consumption by sector

Sector:	Energy (%)	Electricity (%)	Biomass (%)	Petroleum (%)
Industry	20.1	64.2	19.0	21.3
Transport	8.2	0.0	0.0	69.1
Households	63.5	22.9	72.6	3.0
Com. & Public	3.4	12.8	3.3	2.5
Agriculture/Forestry	0.0	0.0	0.0	4.1
Others (Non Specified)	4.3	0.1	5.0	0.0
Total	99.5	100.0	100.0	100.0

Source: 2017 Uganda Energy Balance (Appendix 1.1)

1.2 ELCTRICITY GENERATION

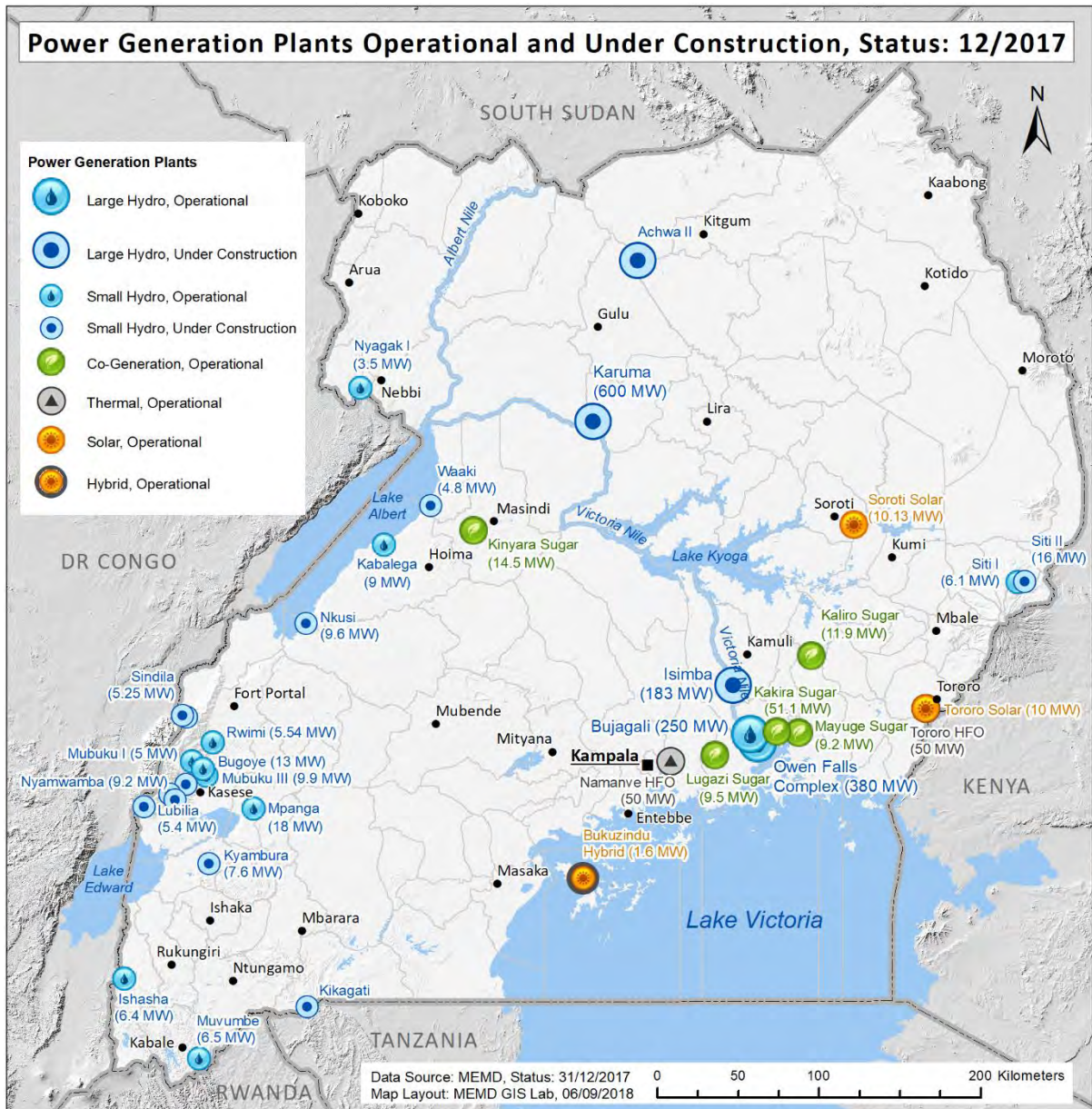


Figure 1.1: Map showing power generation plants operational and under construction in 2017

1.2.1 Installed electricity generation capacity

In 2017, 65% (635 MW) of installed generation capacity is by large hydro plants while 14% (139 MW) is by thermal plants, giving a combined capacity of 717.94 MW (73.6%). Other generation plant categories include; small hydro (82.94 MW), co-generation (96.2 MW), solar (20.1 MW) and hybrid (1.6 MW) plants. For the second year consecutively, the total installed electricity generation capacity in 2017 stood at 974.84 MW, of which 789.24 MW was contracted by UETCL.

Table 1.4: Installed Capacities for Electricity Generation Companies in Uganda 2017

Generation Plant	Operator	Fuel	Year	Installed Capacity (MW)	Contracted Capacity by UETCL (MW)
Large Hydro				635	545.9
Bujagali	Bujagali Energy Limited	Hydro	2012	255	250
Kiira	Eskom Uganda Limited	Hydro	2000	200	295.9
Nalubaale			1954	180	
Small Hydro				82.94	79.44
Mpanga	Africa Energy Management Systems	Hydro	2011	18	18
Bugoye (Mubuku II)	Bugoye Hydro Limited	Hydro	2009	13	13
Kasese Cobalt (Mubuku III)	Kasese Cobalt Company Limited	Hydro	1998	9.9	9.9
Kabalega (Buseruka)	Hydromax Limited	Hydro	2013	9	9
Ishasha (Kanungu)	Eco Power (Uganda) Limited	Hydro	2011	6.4	6.4
Mubuku I (Kilembe Mines)	Tibet Hima Mining Company Limited	Hydro	1950	5	5
Nyagak I**	West Nile Rural Electrification Company	Hydro	2012	3.5	0
Muvumbe	Muvumbe Hydro (U) Limited	Hydro	2017	6.5	6.5
Siti I	Elgon Hydro Siti (Pvt) Limited	Hydro	2017	6.1	6.1
Rwimi	Eco Power (Uganda) Limited	Hydro	2017	5.54	5.54
Co-Generation				96.2	43.9
Kakira Sugar	Kakira Sugar Limited	Bagasse	2007	51.1	32
Kinyara Sugar	Kinyara Sugar Works Limited	Bagasse	2009	14.5	5
Kaliro Sugar	Sugar & Allied Industries Limited	Bagasse	2014	11.9	6.9
Lugazi Sugar***	Sugar Corporation of Uganda Limited	Bagasse	2006	9.5	0
Mayuge Sugar***	Mayuge Sugar Industries Limited	Bagasse	2005	9.2	0
Thermal				139	100
Tororo HFO	Electro-Maxx Limited	Heavy Fuel Oil	2009	89	50

Generation Plant	Operator	Fuel	Year	Installed Capacity (MW)	Contracted Capacity by UETCL (MW)
Namanve HFO	Jacobsen Uganda Power Plant Company Ltd.	Heavy Fuel Oil	2008	50	50
Solar				20.1	20
Soroti Solar	Access Uganda Solar Limited	Solar	2016	10.1	10
Tororo Solar	Tororo Solar North Limited	Solar	2017	10	10
Hybrid				1.6	0
Bukuzindu Hybrid**	Kalangala Infrastructure Services Limited	Solar + Diesel	2015	1.6	0
Total Generation Capacity				974.84	789.24

Source: Individual power producers to MEMD 2017, Status: 31/12/2017

** Off-grid generation

*** All generated Power is used internally

Note:

Appendix 1.8 for electricity generation projects,

Appendix 1.9 for planned electricity generation plants,

Appendix 1.4 for Bujagali HPP,

Appendix 1.5 for Ishasha HPP,

Appendix 1.6 for power generated, exported and used at Kakira sugar works.

See appendix 1.7 for licensed power projects in 2017. Figure 1.2 shows installed electricity generation capacity and the capacity contracted by UETCL.

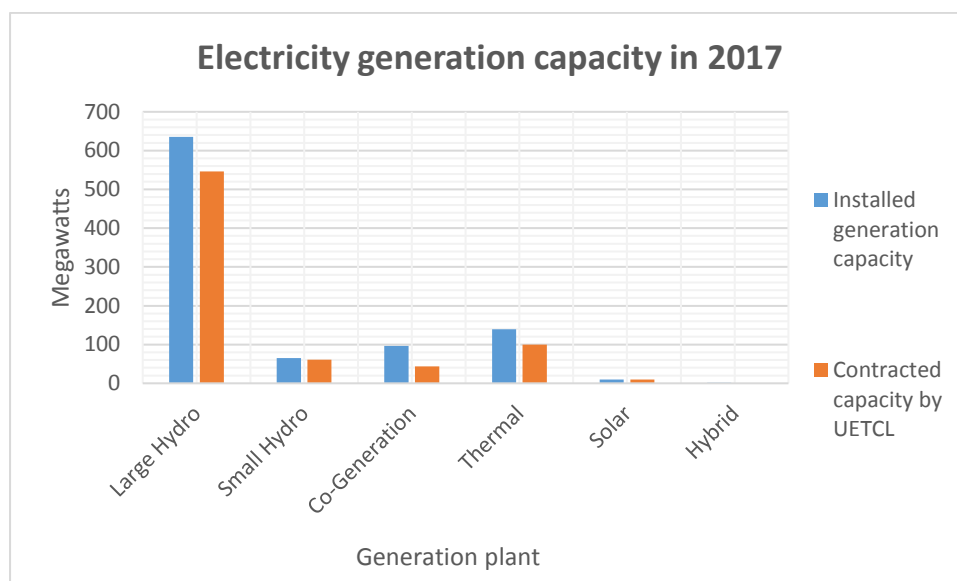


Figure 1.2: Electricity generation capacity in 2017

1.3 ELECTRICITY TRANSMISSION

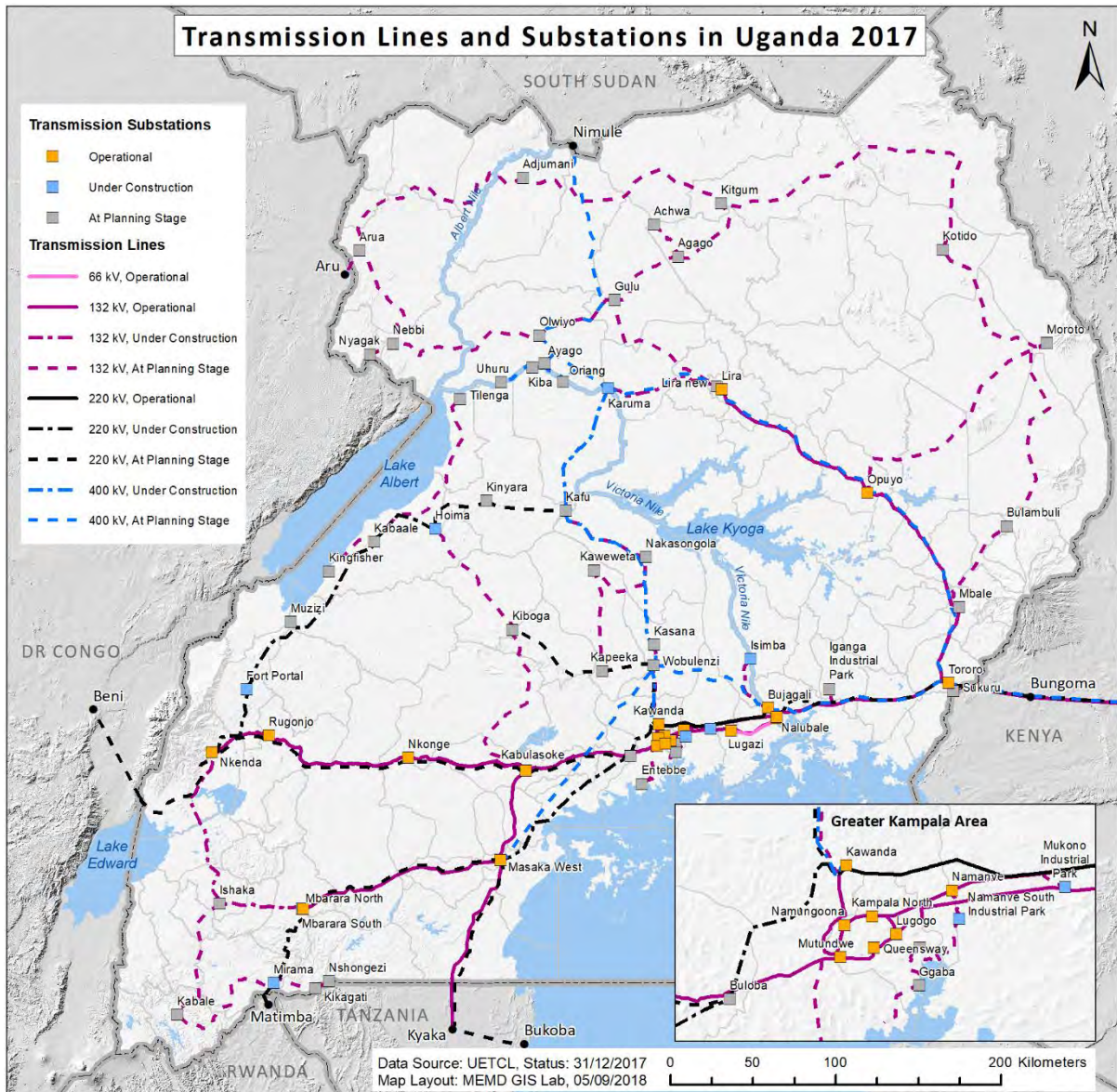


Figure 1.3: Transmission lines and substations in 2017

1.3.1 Transmission power purchases

Total transmission power purchases in 2017 stood at 3,867 GWh, an increase of 9.5% from the previous year, 2016. In a five-year analysis (2013 - 2017), power purchased by the transmission company increased by 27.2%, from 3,039 GWh in 2013 to 3,867 GWh in 2017, averaging at 3,392 GWh.

Table 1.5: UETCL power purchases and sales in GWh

Year	Purchases		Sales		Losses
	GWh	% change	GWh	% change	
2013	3,039	6%	2,932	7%	3.50%
2014	3,198	5%	3,096	6%	3.20%
2015	3,324	4%	3,219	4%	3.20%
2016	3,531	6%	3,392	5%	3.90%
2017	3,867	9.5%	3,716	9.6%	3.90%

See appendices 1.10 and 1.11 for detailed transmission purchases and sales

Note: Losses in this case are computed by subtracting sales from purchases, the resulting figure divided by purchases, and multiplying the result by 100 to get a percentage.

1.3.2 Transmission power sales in 2017

Power sold by the transmission company in 2017 was 3,716 GWh. This represents a 9.6% increase from the previous year (2016) and a 26.7% increase in five years (2013-2017). On average the company sold 3,271 GWh per annum.

1.3.3 Transmission power losses

The power lost during transmission was 3.9%. This was the case in both 2016 and 2017. This indicates a 0.4% increase in power losses between 2013 and 2017. Figure 1.4 shows power transmission purchases, sales and losses from 2013 to 2017.

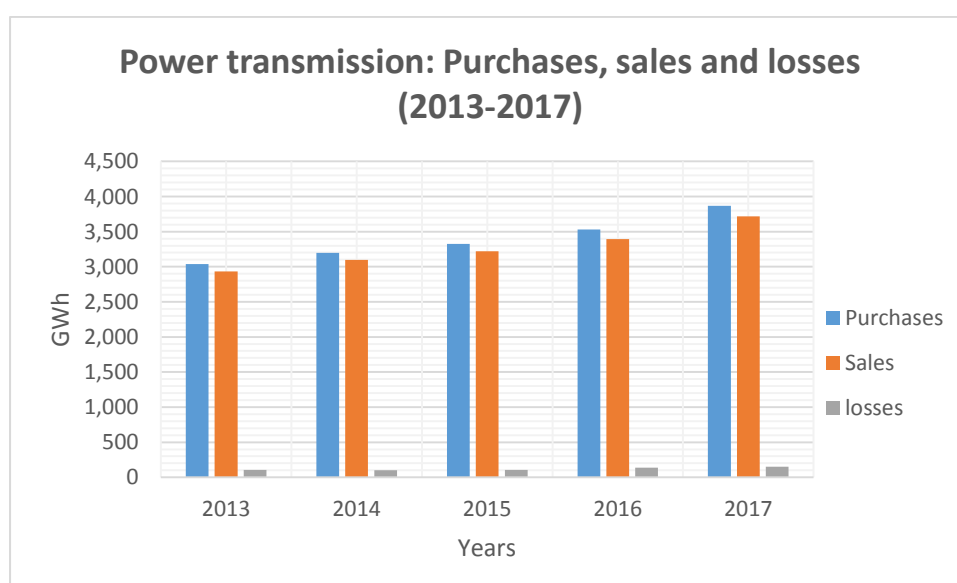


Figure 1.4: Power transmission purchases, sales and losses (2013-2017)

See appendix 1.10 for monthly UETCL electricity purchases across all suppliers and appendix 1.11 for UETCL monthly electricity sales.

1.3.4 Transmission Route Length

Like the past five years, the transmission route length in 2017 stood at 35 km (66 kV lines), 1,442 km (132 kV lines) and 150 km (220 kV lines). According to appendix 1.14 a total of 1,333.8 km of transmission lines are under construction, with 533 km of 132 kV lines, 552.5 km of 220 kV lines and 248.3 km of 400 kV lines expected onto the transmission network when complete.

Table 1.6: Transmission route length in km (2013 - 2017)

Line Voltage	2013	2014	2015	2016	2017
66 kV Lines	35	35	35	35	35
132 kV Lines	1,441	1,442	1,442	1,442	1,442
220 kV Lines	150	150	150	150	150

Source: ERA ESI Database

1.4 ELECTRICITY DISTRIBUTION

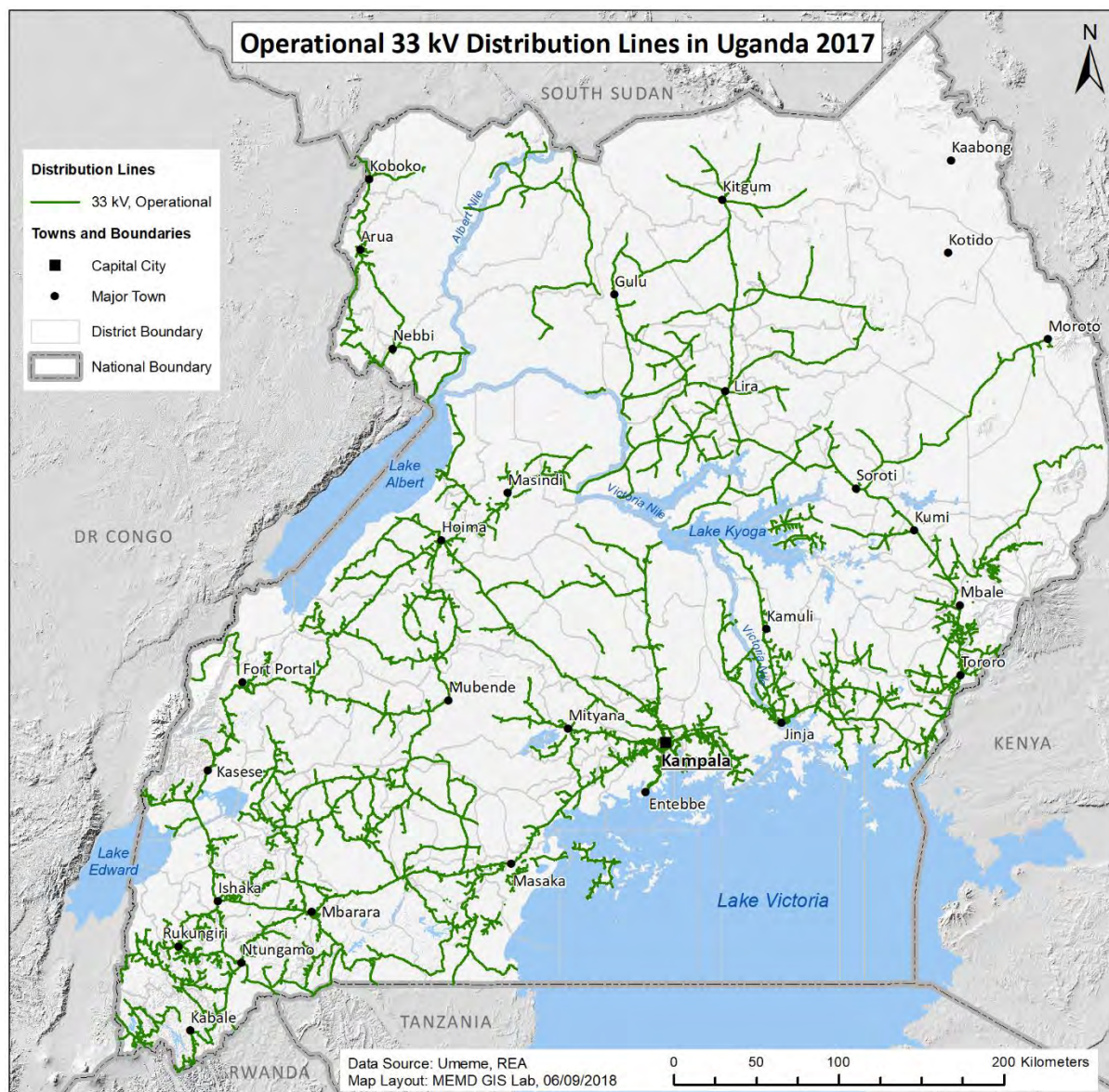


Figure 1.5: Map showing operational distribution lines in 2017

1.4.1 Power purchases by distribution companies in GWh

The power purchased by distribution companies in 2017 totalled to 3,406 GWh. This was an increase of 5% from the previous year (2016). In 2017 distribution companies recorded the highest power purchases as a whole in five years.

Table 1.7: Power purchases and sales by distribution companies (2013 - 2017)

Year	Purchases		Sales		Losses
	GWh	% change	GWh	% change	
2013	2,823.24	6%	2,117.42	8%	25.20%
2014	2,931.20	4%	2,305.05	9%	21.60%
2015	3,109.97	6%	2,502.10	9%	19.50%
2016	3,243.43	4%	2,617.60	5%	19.30%
2017	3,406.89	5%	2,815.35	7.6%	17.36%

See appendix 1.16 for Electricity Purchases by Distribution Companies in MWh (2017) and appendix 1.17 for Electricity Sales by Distribution Companies in MWh (2017).

Note: Losses in this case are computed by subtracting sales from purchases, the resulting figure divided by purchases, and multiplying the result by 100 to get a percentage.

1.4.2 Power sales by distribution companies in GWh

Like purchases, power sales by distribution companies in five years hit their highest in 2017, at 2,815 GWh. This translates into a 7.6% increase in power sales between 2016 and 2017, and a 33% rise in sales between 2013 and 2017.

1.4.3 Power distribution losses

Power lost during distribution reduced by 1.9% from 19.3% in 2016 to 17.4% in 2017.

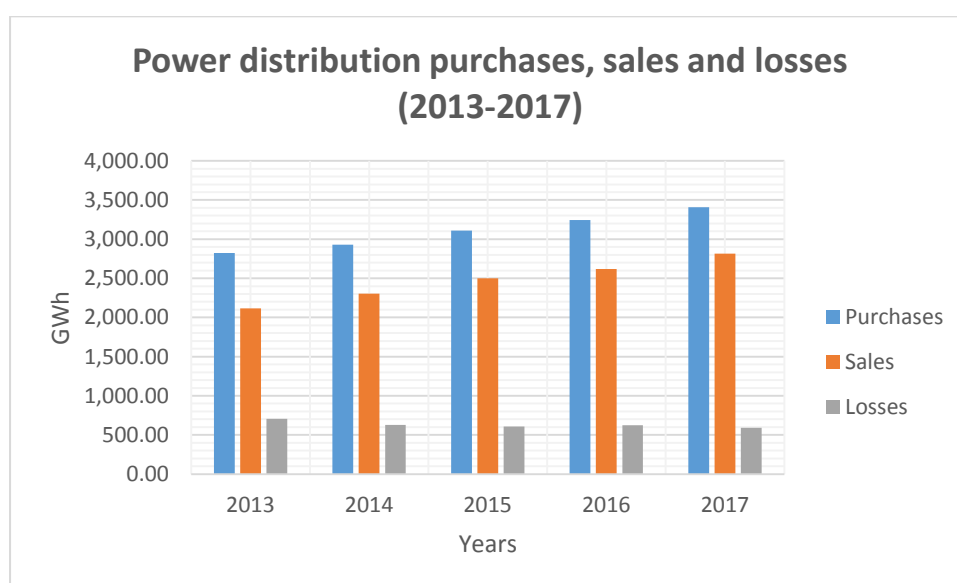


Figure 1.6: Power distribution purchases, sales and losses (2013 - 2017)

Figure 1.6 indicates that there was a gradual increase in both power distribution purchases and sales for the period under review while losses indicate a gentle fall from 2013 to 2017.

1.4.4 Power distribution tariff

The monthly average power distribution tariff for umeme in 2017 was UGX 688.9 (Domestic), UGX 622.3 (Commercial), UGX 571.1 (Medium Industrial), UGX 370.9 (Large Industrial), UGX 672.6 (Street Lights) and UGX 367.5 (Extra Large) in 2017 as presented in table 1.8 below.

Table 1.8: Umeme power distribution tariffs in UGX (2013 - 2017)

Year	Quarter	Domestic	Commercial	Medium Industrial	Large Industrial	Street Lights	Extra Large
2014	Q1	520.6	474.4	458.9	310.4	488.7	
	Q2	517.3	471.1	458.9	307.1	488.7	
	Q3	518.0	417.8	458.9	307.8	488.7	
	Q4	518.7	472.5	458.9	308.5	488.7	
2015	Q1	531.5	484.6	458.9	315.6	502.5	
	Q2	544.9	496.3	458.9	320.5	527.6	
	Q3	558.4	508.6	458.9	328.7	514.9	
	Q4	667.4	604.6	458.9	381.1	610.8	
2016	Q1	651.0	587.0	544.9	369.4	628.4	
	Q2	640.2	578.3	536.2	361.1	619.5	
	Q3	626.0	566.9	524.7	349.5	608.0	
	Q4	623.6	565.1	523.0	347.1	606.2	
2017	Q1	696.9	629.0	577.8	376.3	679.7	372.8
	Q2	687.1	620.9	569.7	370.2	671.2	366.9
	Q3	686.0	619.6	568.8	369.0	670.0	365.8
	Q4	685.6	619.1	568.0	368.1	669.5	364.6

1.5 ATOMIC ENERGY

The Atomic Energy Council (AEC) issued various types of licenses in 2017, these include; possess and use licenses (185), transport permits (9), import permits (13) and sell/hire permits (3). There was no export permit issued by the council in the year under review (see table 1.9).

Table 1.9: Licenses and permits issued by Atomic Energy Council (2013 - 2017)

Year	Possess and use licenses	Transport permits	Import permits	Export permits	Sell/hire permits
2013	55	16	16	7	2
2014	78	19	15	12	3
2015	148	18	16	1	3
2016	179	7	8	2	3
2017	185	9	13	0	3

Figure 1.7 shows licenses and permits issued by the Atomic Energy Council (AEC). From the graph, Possess and Use licenses were the most issued out licenses in all the five years under review. These increased gradually between 2013 and 2014, then shot up between 2014 and 2016 before reaching their peak in 2017.

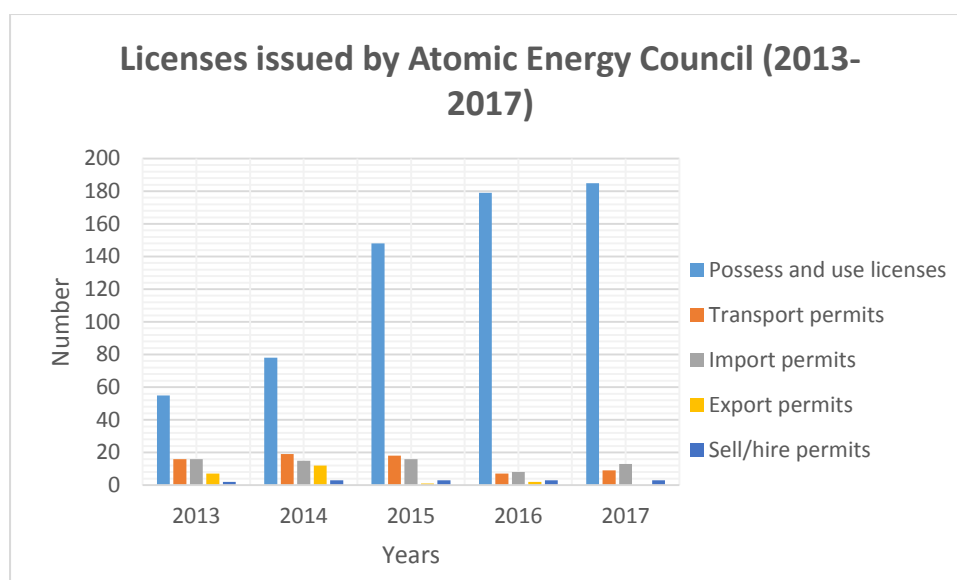


Figure 1.7: Licenses issued by Atomic Energy Council (2013 - 2017)

CHAPTER TWO

PETROLEUM STATISTICS

This section provides statistics on the petroleum value chain of the country.

2.1 PETROLEUM EXPLORATION DEVELOPMENT AND PRODUCTION (UPSTREAM)

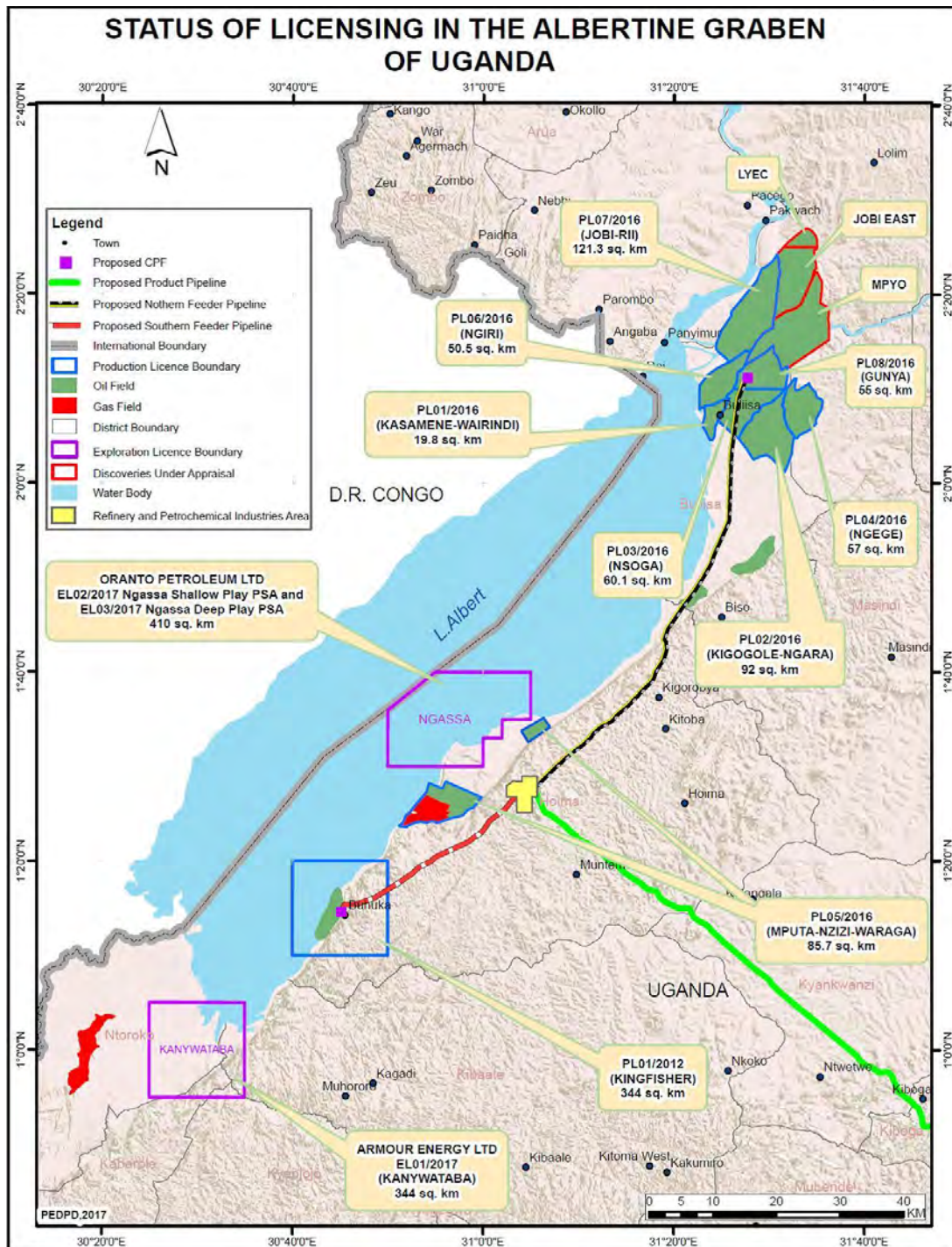


Figure 2.1: Map showing the status of licensing in the Albertine graben of Uganda

2.1.1 Petroleum resources in the Albertine Graben

The Stock Tank Oil Initially In Place (STOIIP) for all oil fields totalled to 6,053 million barrels while the corresponding resources totalled to 1,383 million barrels by end of 2017 (Table 2.1).

Table 2.1: Petroleum resources in the Albertine Graben as at December 2017

FIELD/DISCOVERY	STOIIP (MMbbl)	Resources (MMbbl)
FIELD		
Kingfisher	570	205
Mputa	104	26
Nzizi	32	2
Waraga	96	24
Kigogole	466	81
Nsoga	416	81
Ngara	16	3
Ngege	317	9
Kasamene	156	65
Wahrindi	28	5
Jobi Rii	1,698	342
Ngiri	764	267
Gun ya	446	183
Jobi East	698	68
Mpyo	179	14
Lyec	14	0.4
DISCOVERY		
Ngassa	47	9
Taitai	6	0
Karuka	0	0
Turaco - -	-	-
TOTAL	6,053	1,383

Source: Directorate of Petroleum

2.1.2 Investments in the upstream petroleum subsector in 2017

Total investment in the upstream petroleum subsector in 2017 amounted to USD 155.568 million with a cumulative amount of USD 3.236 billion as presented in table 2.2.

Table 2.2: Investments in the petroleum sub sector in 2017

Exploration Area	2017	2018 (Projections)
EA 1 & EA 1A - Tullow/Total/CNOOC	83,571,000	252,329,000
EA2 - Tullow/Total/CNOOC	42,616,000	85,085,000
EA3A - Tullow Oil/Total/CNOOC	29,381,217	152,366,000
Total for 2017 (USD)	155,568,217	489,780,000
Cumulative (USD)	3,235,703,726	3,725,483,726
Annual (UGX)	544,489,000,000	
Exchange rate (mid-rate)	3,500	

Figure 2.2 shows investments in the oil and gas sub sector in 2017. Exploration Area EA1 & EA1A had the highest level of investments, followed by EA2 and lastly EA3A. This was attributed to the ongoing development activities which include studies for FEED by consultants and compensations.

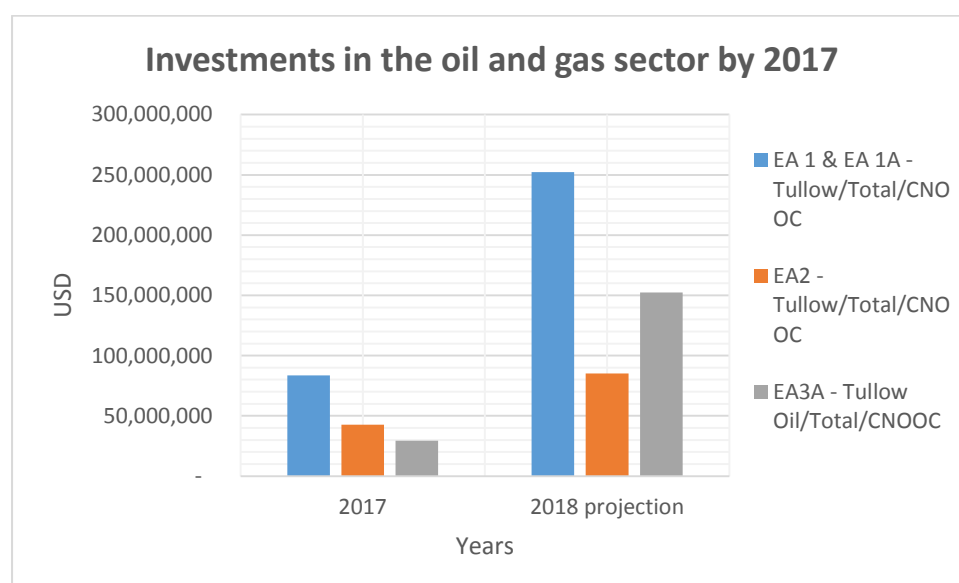


Figure 2.2: Level of investments in the oil and gas sector by 2017

2.2 PETROLEUM SUPPLIES AND DISTRIBUTION (DOWNSTREAM)

2.2.1 Petroleum product imports

2.2.1.1 Petroleum product imports

Petroleum products imported into the country in 2017 amounted to 894,072,306 litres (PMS), 56,526,813 litres (BIK), 945,083,916 litres (AGO) and 125,961,954 litres (JET A1). On average, the country imported 74,506,026 litres, 4,710,568 litres, 78,756,993 litres and 10,496,830 litres of PMS, BIK, AGO and JET A1 per month, respectively. Thus AGO was the most imported petroleum product, followed by PMS, JET A1 and BIK (table 2.3).

Table 2.3: Monthly Imports of petroleum products in litres (2017)

Month	PMS	BIK	AGO	JET A1
Jan	81,474,032	3,681,263	73,117,042	8,874,175
Feb	66,984,124	4,297,325	75,589,250	10,398,723
Mar	75,529,511	6,077,536	70,041,656	11,659,356
Apr	71,483,546	4,204,102	79,804,277	7,308,762
May	72,123,654	5,191,196	78,019,732	14,615,028
Jun	71,452,637	5,350,910	71,020,190	7,397,602
Jul	81,445,629	4,527,033	85,117,680	14,331,179
Aug	82,192,923	4,482,784	83,093,463	8,060,052
Sep	68,786,464	5,316,128	94,590,874	10,407,925
Oct	66,630,765	3,991,367	73,258,626	12,382,163
Nov	76,818,098	5,440,276	77,407,580	9,687,083
Dec	79,150,923	3,966,893	84,023,546	10,839,906
Total	894,072,306	56,526,813	945,083,916	125,961,954
Average	74,506,026	4,710,568	78,756,993	10,496,830
Minimum	66,630,765	3,681,263	70,041,656	7,308,762
Maximum	82,192,923	6,077,536	94,590,874	14,615,028

Figure 2.3 shows monthly imports of PMS, BIK, AGO and JET A1. From the data, JET A1 had the least imported litres followed by JET A1 in all the months. PMS and AGO interchangeably shared the top mark of most imported volumes. For instance the year began with PMS recording the highest volume imported in January though this was short-lived as it dropped to a mark below AGO imports in February. In March 2017, PMS rose again beyond AGO before dropping again in April. This up and down trend continued up to the close of the year with AGO emerging on top in December. A moving average indicates that AGO represented the highest level of petroleum import in 2017 followed by PMS.

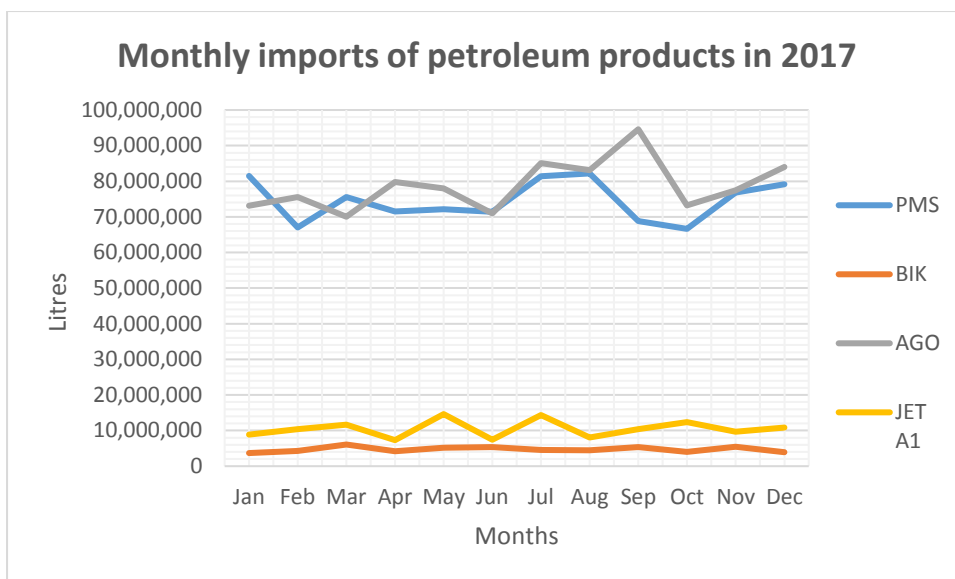


Figure 2.3: Monthly imports of petroleum products in 2017

2.2.1.2 Annual Petroleum imports in litres

Petroleum figures in table 2.4 indicate a general increase in volumes of PMS and AGO imported while BIK volumes dropped. The highest rise in volumes of PMS and AGO were imported between 2014 and 2015 at 17% and 11%, respectively while BIK generally dropped by 22.9% between 2013 and 2017.

Table 2.4: Annual petroleum imports in litres (2013 - 2017)

Year	PMS		BIK		AGO	
	Litres	% change	Litres	% change	Litres	% change
2013	567,898,845	13%	73,308,579	-2%	672,142,799	4%
2014	644,265,185	13%	67,164,898	-8%	727,417,159	8%
2015	754,397,923	17%	60,345,693	-10%	807,772,367	11%
2016	818,005,054	8%	59,717,862	-1%	870,726,698	8%
2017	894,072,306	9%	56,526,813	-5%	945,083,916	9%

Figure 2.4 shows trend lines for three petroleum product imports from 2013 to 2017. The figure shows AGO emerging on top followed by PMS and lastly BIK in all the five years under review.

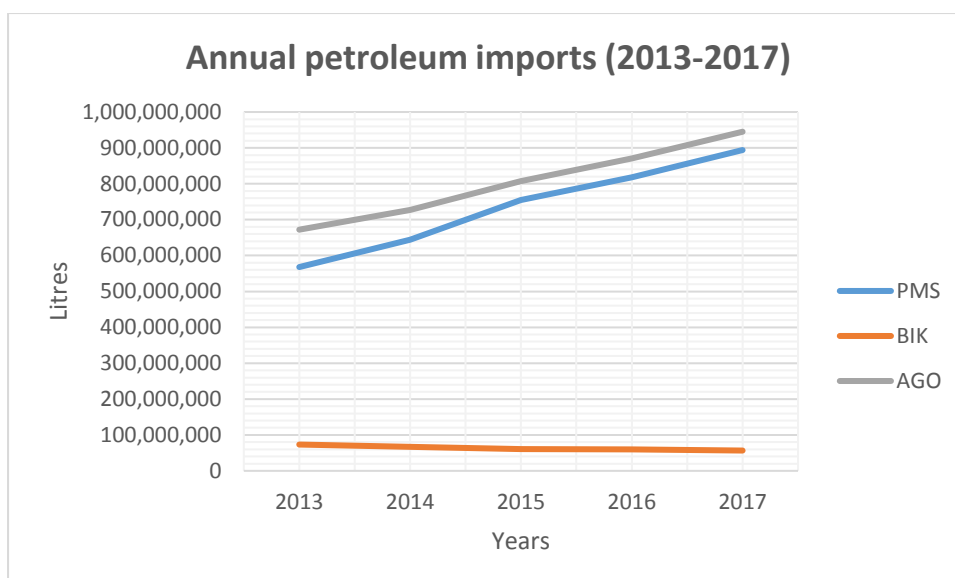


Figure 2.4: Annual imports of petroleum products (2013-2017)

2.2.2 Monthly import bill and Government revenue 2017

The value of the import bill and government revenue collected in 2017 totalled UGX 5,122 billion and UGX 604 billion, respectively. A brief analysis of both the monthly import bill and government revenue shows that both their highest figures were recorded in May 2017, worth UGX 480 billion and UGX 60 billion, respectively. The lowest figure for import bill was recorded in January (UGX 369 billion) while that for government revenue in both January and April (UGX 44 billion). On average, UGX 427 billion in import bill and UGX 50 billion in government revenue were recorded per month in 2017 as shown in table 2.5.

Table 2.5: Monthly import bill and Government revenue in 2017

Months	Monthly Import Bill (Billion Ugx)	Government Revenue (Billion Ugx)
January	369	44
February	414	45
March	464	55
April	397	44
May	480	60
June	447	52
July	424	50
August	442	54
September	407	48
October	417	50
November	416	51
December	446	52
TOTAL	5,122	604
Average	427	50

Figure 2.5 is a line graph showing the monthly import bill recorded in 2017 in billion Uganda shillings.

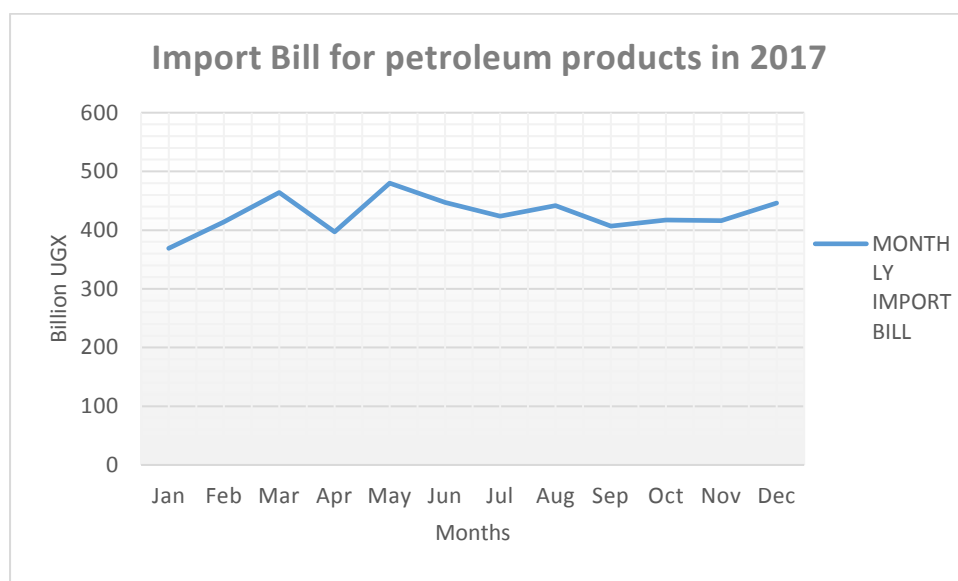


Figure 2.5: Import bill for petroleum products in 2017

The figure below shows government revenue in billion Uganda shillings accruing from importation of petroleum products into the country in 2017.

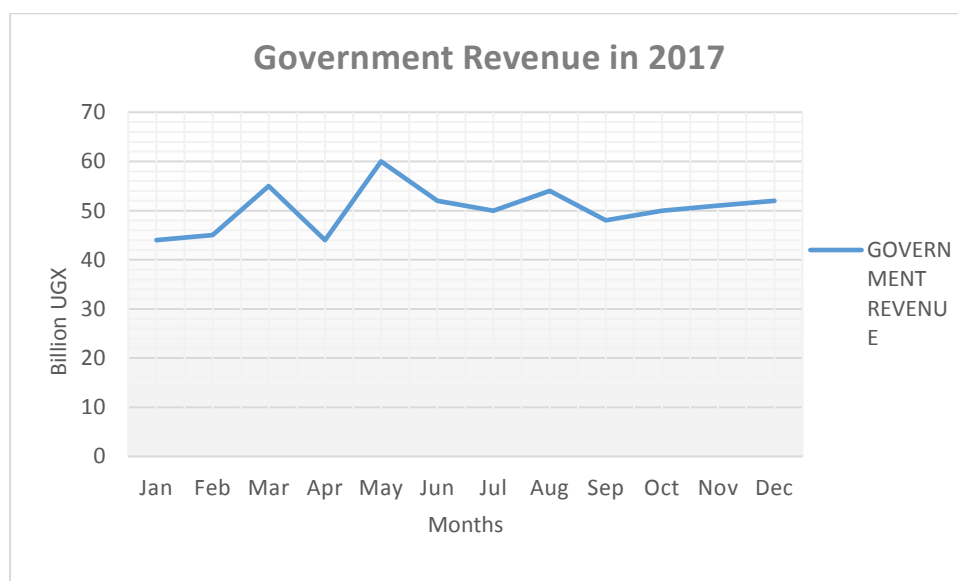


Figure 2.6: Government revenue generated from importation of petroleum products in 2017

2.2.3 Market shares of Oil Marketing Companies in 2017

The petroleum products market in Uganda in 2017 had a total of 65 licensed oil marketing companies (appendix 2.1), with the four biggest players; vivo energy Uganda limited, Total energy Uganda limited, Nile Energy Limited and Stabex Petroleum selling 345.4 million litres, 254.5 million litres, 171.1 million litres and 130.57 million litres of petroleum products, respectively (Table 2.6). Their respective market shares were 18% for vivo energy, 13% for Total Uganda limited, 9% for Nile Energy ltd and 6.9% for Stabex petroleum.

Table 2.6: Market shares of Oil Marketing Companies in 2017

No.	OMC	Total sales (litres)	Market share (%)
1	VIVO ENERGY (U) LTD	345,386,867	18.2
2	Total Uganda Ltd	254,531,306	13.4
3	Nile Energy Limited	171,125,465	9.0
4	STABEX PETROLEUM	130,574,729	6.9
5	DON (U LTD	76,627,446	4.0
6	Hass Petroleum (U) Ltd	75,620,636	4.0
7	ORYX OIL (U) LTD	66,203,281	3.5
8	Petrocity Enterprises Uganda	52,764,589	2.8
9	Moil Uganda Limited	48,796,857	2.6
10	MOUNT MERU PETROLEUM (U) LTD	47,829,246	2.5
11	Petro Uganda Limited	47,197,604	2.5
12	Kobil Uganda Ltd	44,072,016	2.3
13	City Oil Ltd	43,513,528	2.3
14	ONE PETROLEUM (U) LIMITED	41,650,640	2.2
15	BAKRI	41,576,239	2.2
16	Gapco Uganda Ltd	40,250,071	2.1
17	MOGAS	40,155,201	2.1
18	AINUSHAMSI ENERGY (U) LTD	27,853,107	1.5
19	Libya Oil Uganda	24,013,943	1.3
20	REGNOL OIL LTD	23,893,022	1.3
	Others	252,047,246	13.4

The figure below shows market shares of oil marketing companies in Uganda in 2017.

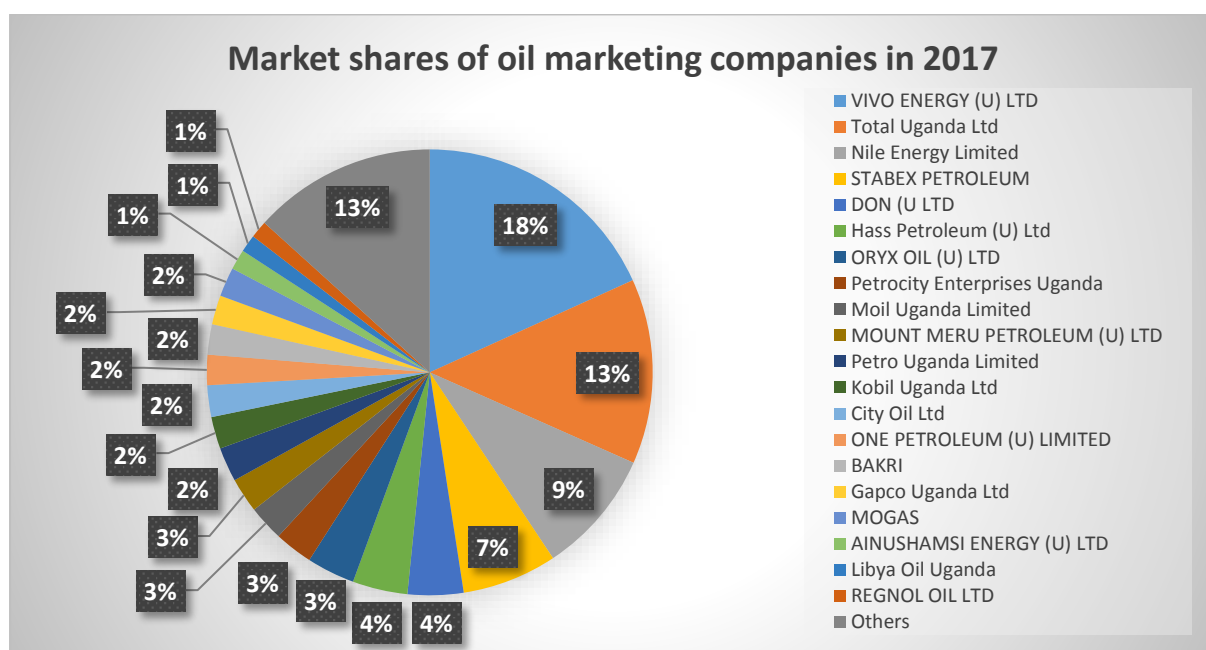


Figure 2.7: Market shares of oil marketing companies in 2017

2.2.4 Herfindahl Hirschman Index (HHI)

Table 2.7 shows the systematic computation of the Herfindahl Hirschman Index for oil marketing companies in Uganda in 2017.

Table 2.7: Herfindahl Hirschman Index

SN	OMC	Market share (%)	Squares of market shares
1	VIVO ENERGY (U) LTD	18.22	331.97
2	Total Uganda Ltd	13.43	180.29
3	Nile Energy Limited	9.03	81.49
4	STABEX PETROLEUM	6.89	47.45
5	DON (U LTD	4.04	16.34
6	Hass Petroleum (U) Ltd	3.99	15.91
7	ORYX OIL (U) LTD	3.49	12.20
8	Petrocity Enterprises Uganda	2.78	7.75
9	Moil Uganda Limited	2.57	6.63
10	MOUNT MERU PETROLEUM (U) LTD	2.52	6.37
11	Petro Uganda Limited	2.49	6.20
12	Kobil Uganda Ltd	2.32	5.41
13	City Oil Ltd	2.30	5.27
14	ONE PETROLEUM (U) LIMITED	2.20	4.83
15	BAKRI	2.19	4.81
16	Gapco Uganda Ltd	2.12	4.51
17	MOGAS	2.12	4.49
18	AINUSHAMSI ENERGY (U) LTD	1.47	2.16
19	Libya Oil Uganda	1.27	1.60
20	REGNOL OIL LTD	1.26	1.59
.	.	.	.
.	.	.	.
.	.	.	.
58			
	Grand total	100	HHI = 756.71

See appendix 2.1 for a comprehensive list of oil marketing companies and a full computation of the HHI

Herfindahl Hirschman Index (HHI) is used to measure company market share concentration within an industry. It is calculated by squaring the market share of each firm competing in a market, and then summing the resulting numbers, and can range from close to zero to 10,000. Decisions are made basing on the following criteria:

A HHI index below 0.01 (or 100) indicates a highly competitive index.

A HHI index below 0.15 (or 1,500) indicates a non-concentrated index.

A HHI index between 0.15 to 0.25 (or 1,500 to 2,500) indicates moderate concentration.

A HHI index above 0.25 (above 2,500) indicates high concentration.

A small index indicates a competitive industry with no dominant players.

Thus from table 2.7, the computed HHI of 756.7 implies that the oil market in Uganda is not concentrated.

2.2.5 Prices of petroleum products

2.2.5.1 Monthly local pump prices of petroleum products in UGX (2017)

Local petroleum pump prices ranged between UGX 3,294 and UGX 3,433 per litre for PMS; UGX 2,781 and UGX 3,070 per litre for AGO; and UGX 2,428 and UGX 2,666 per litre for BIK. In January, the lowest prices for PMS (UGX 3,294) and AGO (UGX 2,781) were recorded while in August the country recorded the lowest BIK price of UGX 2,428. On the other hand, in December, the country recorded the highest price of PMS (UGX 3,433) while in March, BIK and AGO highest prices were recorded at UGX 2,666 and UGX 3,070 per litre, respectively. Generally, the monthly local petroleum pump prices averaged at UGX 3,433 for PMS, UGX 2,502 for BIK and UGX 2,964 for AGO in 2017.

Table 2.8: Local petroleum product pump prices in UGX

Month	PMS	BIK	AGO
Jan	3,294	2,456	2,781
Feb	3,390	2,644	2,898
Mar	3,424	2,666	3,070
Apr	3,472	2,591	2,996
May	3,456	2,453	3,000
Jun	3,447	2,493	2,981
Jul	3,405	2,434	2,979
Aug	3,386	2,428	2,940
Sep	3,378	2,444	2,927
Oct	3,498	2,467	2,984
Nov	3,510	2,470	3,001
Dec	3,540	2,482	3,008
Average	3,433	2,502	2,964
Minimum	3,294	2,428	2,781
Maximum	3,540	2,666	3,070

Figure 2.8 shows average monthly local pump prices for petroleum products in 2017. From January to December, PMS traded highest followed by AGO and lastly BIK. According to the graph, all product prices followed a similar trend throughout the year.

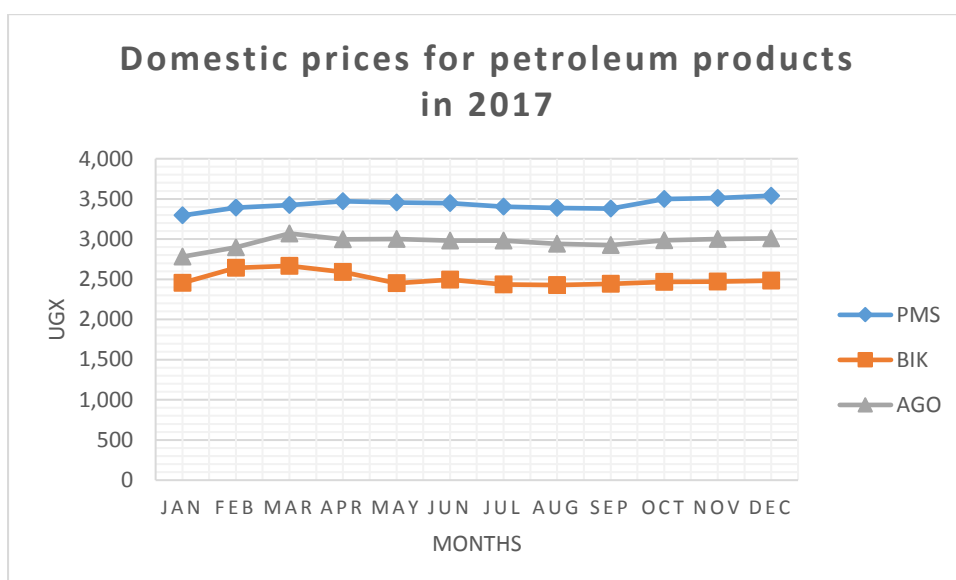


Figure 2.8: Domestic prices for petroleum products in 2017

2.2.5.2 Monthly International Crude oil prices -\$/Bbl for 2017

Crude oil prices on the world market in 2017 ranged between USD 45.21 and USD 61.45 per barrel for OPEC BASKET; USD 45.44 and USD 57.36 per barrel for NYMEX light swt; and USD 47.80 and USD 62.89 per barrel for IPE BRENT. The monthly average prices were USD 52.56, USD 51.06 and USD 54.81 per barrel for OPEC BASKET, NYMEX light swt and IPE BRENT, respectively. For the three global price categories, prices reached their minimum in June, and their maximum in December (Table 2.9).

Table 2.9: Crude oil price in \$/barrel

Month	OPEC BASKET	NYMEX light swt	IPE BRENT
Jan	52.21	52.53	55.29
Feb	53.28	53.44	56.03
Mar	50.84	50.4	53.2
Apr	51.03	51.02	53.74
May	49.76	49.2	52.03
Jun	45.21	45.44	47.8
Jul	46.9	46.57	49.04
Aug	49.81	48.42	52.02
Sep	53.97	49.84	55.74
Oct	55.45	51.45	57.5
Nov	60.83	57.02	62.49
Dec	61.45	57.36	62.89
Average	52.56	51.06	54.81
Minimum	45.21	45.44	47.80
Maximum	61.45	57.36	62.89

Figure 2.9 shows average monthly crude oil prices in 2017. From the graph, the year started with global crude oil prices just above USD 50 per barrel in January, then slightly increasing in February before falling to their lowest in June at just below USD 50 per barrel. Prices thereafter gradually increased for the remaining half of the year, with the highest figure recorded in December for all crude oil prices.

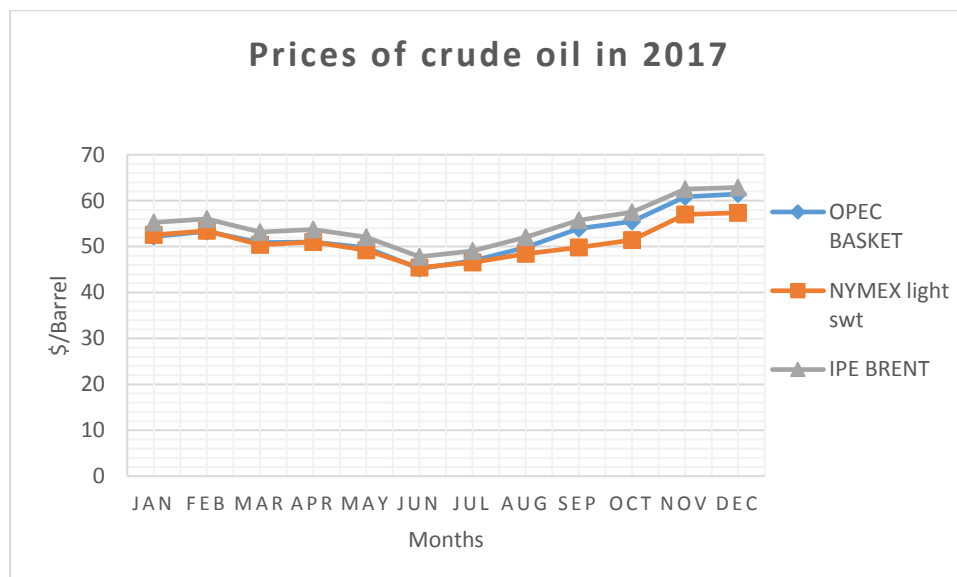


Figure 2.9: Prices of crude oil in 2017

2.2.5.3 Monthly International refined product prices in US\$/Gallon (2017)

The Nymex Gasoline refined product prices oscillated between USD 426 and USD 560 per gallon while Nymex Heating Oil was between USD 143.14 and USD 192.44 per gallon in the year 2017. The monthly average prices were USD 493.14 and USD 166.37 per gallon for Nymex Gasoline and Nymex Heating Oil, respectively (table 2.10).

Table 2.10: Monthly International refined product prices in US\$/Gallon (2017)

Month	Nymex Gasoline \$/Gallon	Nymex Heating Oil \$/Gallon
Jan	486.95	163.81
Feb	497.13	164.52
Mar	472.04	155.47
Apr	479.58	159.40
May	459.21	153.44
Jun	426.00	143.14
Jul	451.19	152.12
Aug	479.70	162.36
Sep	530.53	178.36
Oct	528.48	179.54
Nov	546.17	192.44
Dec	560.75	191.81
Average	493.14	166.37
Minimum	426.00	143.14
Maximum	560.75	192.44

The figure below shows the average monthly international refined petroleum product prices for Nymex Gasoline and Nymex Heating Oil in 2017.

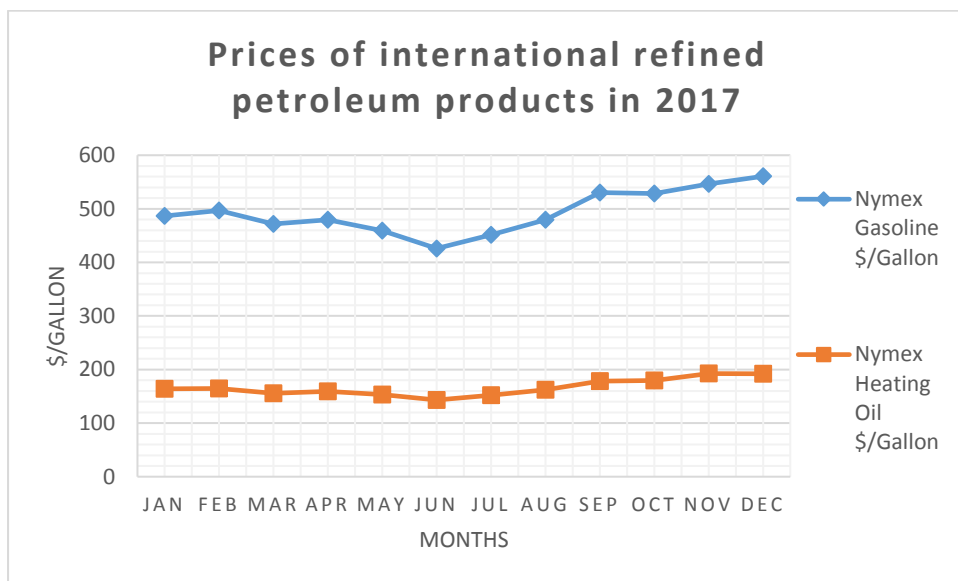


Figure 2.10: Prices of international refined petroleum products in 2017

CHAPTER THREE

MINERAL STATISTICS

This section provides statistics on minerals produced, imported and exported in 2017.

3.0 MINERAL PRODUCTION

3.1 Quarterly Mineral Production in Tonnes (2017)

Minerals produced in 2017 totalled to 2.18 million tonnes. Limestone and pozollana production accounted for 56.5% and 36.4% of total mineral production, respectively. This implies a 93% share of the total minerals produced in the country (table 3.1).

Table 3.1: Quarterly Mineral Production in Tonnes (2017)

Mineral	Q1	Q2	Q3	Q4	Total
Limestone	302852.3	344806.4	281371	302895.8	1,231,925.50
Pozollana	186850.9	214813.4	183477.9	207421.8	792,563.86
Gold	0.001634	0.000703	0.00082	0.000697	0.0039
Vermiculite	270.6	2543	1305.7	0	4,119.30
Wolfram	31.5	36.2	10.15	0	77.85
Syenitic Aggregate	22715.98	28243.04	24976.02	17703.87	93,638.91
Kaolin	31125.55	10922.19	13268.83	0	55,316.57
Iron Ore	1520	700	100	0	2,320.00
Granite	0	0	0	60	60
Coltan (30% Purity)	4.637	2.8	2.1	1.65	11.19
Tin (75% Purity)	11.9	17.303	27.334	31.32	87.86
Total					2,180,121.04

NOTE:

The data represented in the table was compiled from reported production by the time of writing this report. Also, all minerals obtained in the course of prospecting, exploration, mining or mineral beneficiation are subject to payment of royalties on the gross

From the data, the total amount of limestone produced in 2017 was slightly above 1.2 million tonnes followed by pozollana at 800 thousand tonnes while quantities of other minerals produced were below 200 thousand tonnes.

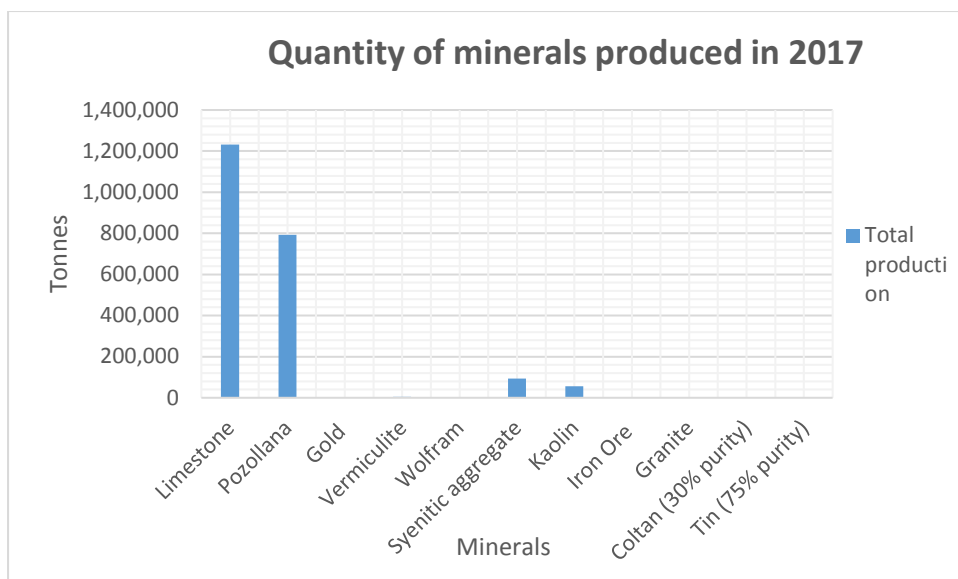


Figure 3.1: Quantity of minerals produced in 2017

3.2 Mineral imports

Table 3.2: Value of Mineral Imports as per Permits issued (July – Sept 2017)

Mineral	Quantity (Kgs)			Total Quantity (Kg)	Value(UGX)
	July	August	September		
Gold*	876	650	595	2,121	275,185,120,876
Total					275,185,120,876

Source: DGSM Database 2017 Entebbe

Importation of minerals in 2017 only occurred from July to September with gold, worth UGX 275 billion, being the only mineral imported (table 3.2).

3.3 Mineral Exports

The biggest mineral export in 2017 was gold totalling to 10,049 kgs and valued at UGX 8.56 billion. This was followed by wolfram valued at UGX 3.86 billion and other minerals as presented in table 3.3 below.

Table 3.3: Value of mineral Exports in 2017 (Jan - Dec)

Mineral	Quantity (KG)	Royalties (UGX)	Gross (UGX)
Wolfram	174,500	192,704,763	3,859,950,256
Gold	10,049	429,432,879	8,559,278,859
Lead	50,000	18,680,814	373,616,300
Tungsten	18,000	16,455,648	329,112,957
Coltan	6,300	8,523,878	170,477,546
Iron ore	6,000,000	22,500,000	450,000,000
Tantalite	6,000	13,116,991	262,339,818
Total	6,264,849	701,414,973	14,004,775,736

3.4 NTR assessed and collected in 2017

Non Tax Revenue (NTR) collected from mineral dealings in 2017 totalled to UGX 13.478 billion. Royalties, worth UGX 11.129 billion, superseded other sources of NTR, followed by Exploration license fees and rents valued at UGX 991.39 million, Mining lease fees and rents valued at UGX 893.24 million, mineral dealer's license fees valued at UGX 297 million and other fees as detailed in table 3.4.

Table 3.4: Non Tax Revenue assessed and collected in UGX (2017)

No.	Details of NTR	Jan-Mar	Apr-Jun	Jul -Sep	Oct-Dec	Total (UGX)
1	Prospecting license fees	12,500,000	21,500,000	20,000,000	22,000,000	76,000,000
2	EL fees and Rents	108,975,363	172,860,000	485,545,000	224,010,000	991,390,363
3	Location fees and rents	6,400,000	32,000,000	8,900,000	15,300,000	62,600,000
4	ML/SML fees and rents	278,700,000	535,840,000	5,000,000	73,700,000	893,240,000
5	Mineral Dealers license fees	124,500,000	78,500,000	30,000,000	64,000,000	297,000,000
6	Retention license fees	1,000,000	5,000,000	7,000,000	4,900,000	17,900,000
7	Royalties	605,626,604	2,700,303,937	4,604,307,744	3,218,269,071	11,128,507,356
8	Import Fees	-	-	-	2,468,932	2,468,932
9	Goldsmith license	-	2,000,000	-	-	2,000,000
10	Registration fees and copies	-	1,500,000	-	-	1,500,000
11	publications/maps	-	325,620	-	-	325,620
12	Blasting	2,500,000	1,000,000	-	2,000,000	5,500,000
	Grand Total	1,140,201,967	3,550,829,557	5,160,752,744	3,626,648,003	13,478,432,271

Figure 3.2 shows Non Tax Revenue (NTR) assessed and collected in 2017 from various sources in Uganda shillings.

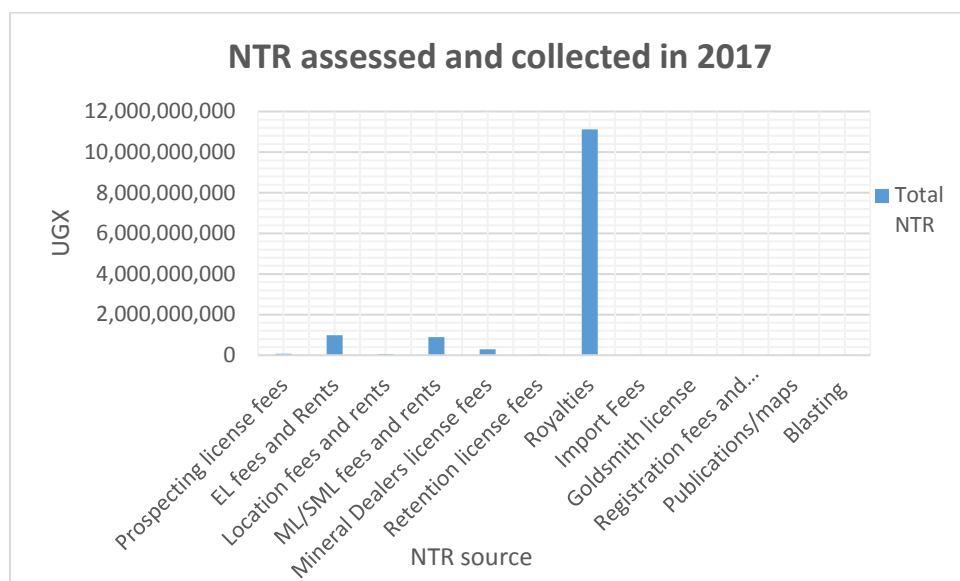


Figure 3.2: Non Tax Revenue assessed and collected in 2017

3.5 Mineral licensing

The mineral licensing status by the close of the year 2017 stood at 375 Exploration Licenses, 4 Retention Licenses, 71 Location Licenses, 39 Mining Leases and 16 Mineral Dealers as indicated in table 3.5.

Table 3.5: Status of mineral licensing as at 31st December 2017

Type of License	Status as at 1/10/2017	Granted	Renewed	Expired	Revoked	Current as at 31/12/2017
Exploration License	365	30	7	14	0	375
Retention License	4	0	0	0	0	4
Location License	71	1	0	0	0	71
Mining Lease	39	0	0	0	0	39
Mineral Dealers*	0	16	N/A	0	0	16

See appendix 3.3 for a detailed status of mineral licensing

STATISTICAL APPENDICES

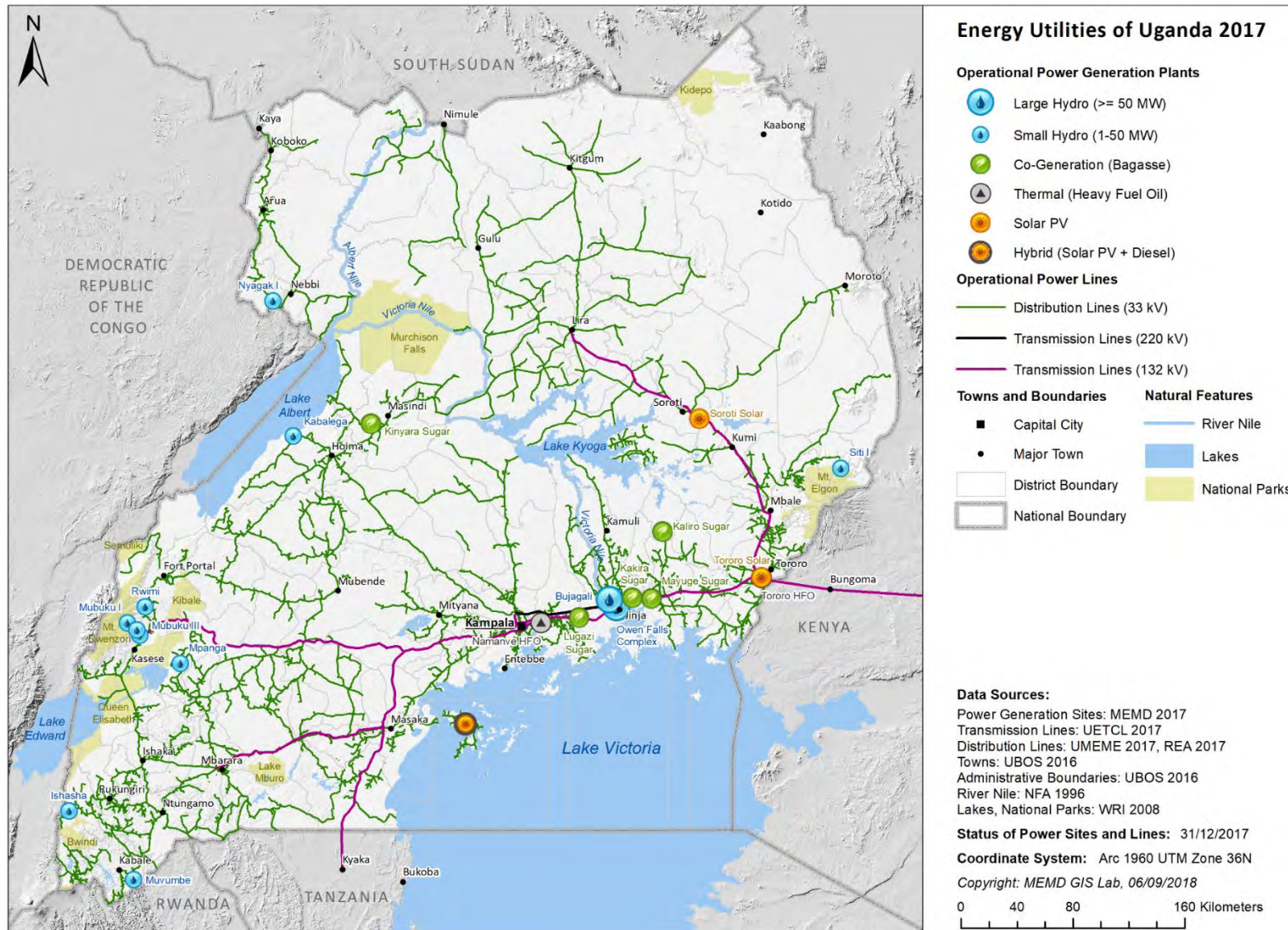
Appendix 1: Power

1.1: 2017 Uganda Energy Balance

Thousand Tonnes of Oil Equivalent (ktoe)

Thousand Tonnes of Oil Equivalent (ktoe)		Petroleum Products				Hydro	Solar PV	Biofuels & Waste			Electricity	Total
		Gasoline	Jet Kerosene	Other Kerosene	Gas / Diesel Oil			Commercial Firewood	Charcoal	Agro Residues and Waste		
PRIMARY SUPPLY	Production	0	0	0	0	296	2	12310	0	2855	0	15462
	Imports	681	106	47	819	0	0	2341	0	0	2	3996
	Exports (-)	0	0	0	0	0	0	0	0	0	-27	-27
	International Marine Bunkers (-)	0	0	0	0	0	0	0	0	0	0	0
	International Aviation Bunkers (-)	0	0	0	0	0	0	0	0	0	0	0
	Stock Changes (+ draw, - build)	0	0	0	0	0	0	0	0	0	0	0
	TPES	681	106	47	819	296	2	14650	0	2855	-25	19431
	Transfers	0	0	0	0	0	0	0	0	0	0	0
	Statistical Difference	0	1	0	0	0	0	76	2648	-27	-1	2697
TRANSFORMATION	Transformation	0	0	0	0	-296	-2	-5350	-1324	-1490	332	-8131
	Electricity Producers	0	0	0	0	-296	-2	0	0	-1490	332	-1457
	Petroleum Refineries	0	0	0	0	0	0	0	0	0	0	0
	Charcoal Plants	0	0	0	0	0	0	-5350	-1324	0	0	-6674
	Gas-To-Liquids	0	0	0	0	0	0	0	0	0	0	0
	Coal-To-Liquids	0	0	0	0	0	0	0	0	0	0	0
	Blast Furnaces	0	0	0	0	0	0	0	0	0	0	0
	Other Transformation Processes	0	0	0	0	0	0	0	0	0	0	0
	Energy Industry Own Use	0	0	0	0	0	0	0	0	0	0	0
	Losses	0	0	0	0	0	0	0	0	0	-64	-64
FINAL CONSUMPTION	Total Final Consumption	681	107	47	819	0	0	9376	1324	1338	242	13934
	Industry	68	0	38	246	0	0	1605	0	688	155	2800
	Transport	545	107	0	491	0	0	0	0	0	0	1143
	Households	0	0	9	41	0	0	6989	1103	650	55	8848
	Com. & Public	0	0	0	41	0	0	181	221	0	31	473
	Agriculture/Forestry	68	0	0	0	0	0	0	0	0	0	68
	Others (Non Specified)	0	0	0	0	0	0	602	0	0	0	602
	Non-Energy Use	0	0	0	0	0	0	0	0	0	0	0

1.2: Energy utilities of Uganda in 2017



1.3: District Electrification Status 2017

District	Status	District	Status	District	Status	District	Status	District	Status
Abim	Electrified	Buvuma	Feasibility done	Kibaale	Electrified	Mayuge	Electrified	Rakai	Electrified
Adjumani	Electrified	Buyende	Under Construction	Kiboga	Electrified	Mbale	Electrified	Rubirizi	Electrified
Agago	Electrified	Dokolo	Electrified	Kibuku	Electrified	Mbarara	Electrified	Rukungiri	Electrified
Alebtong	Electrified	Gomba	Electrified	Kiruhura	Electrified	Mitooma	Electrified	Serere	Electrified
Amolatar	Electrified	Gulu	Electrified	Kiryandongo	Electrified	Mityana	Electrified	Sheema	Electrified
Amudat	Electrified	Hoima	Electrified	Kisoro	Electrified	Moroto	Electrified	Sironko	Electrified
Amuria	Electrified	Ibanda	Electrified	Kitgum	Electrified	Moyo	Electrified	Soroti	Electrified
Amuru	Electrified	Iganga	Electrified	Koboko	Electrified	Mpigi	Electrified	Ssembabule	Electrified
Apac	Electrified	Isingiro	Electrified	Kole	Electrified	Mubende	Electrified	Tororo	Electrified
Arua	Electrified	Jinja	Electrified	Kotido	Under Construction	Mukono	Electrified	Wakiso	Electrified
Budaka	Electrified	Kaabong	Under Construction	Kumi	Electrified	Nakapiripirit	Electrified	Yumbe	Electrified
Bududa	Electrified	Kabale	Electrified	Kween	Electrified	Nakaseke	Electrified	Zombo	Electrified
Bugiri	Electrified	Kabarole	Electrified	Kyankwanzi	Electrified	Nakasongola	Electrified	Kagadi	Electrified
Buhweju	Electrified	Kaberamaido	Electrified	Kyegegwa	Electrified	Namayingo	Electrified	Kakumiro	Electrified
Buikwe	Electrified	Kalangala	Electrified	Kyenjojo	Electrified	Namutumba	Electrified	Omoro	Electrified
Bukedea	Electrified	Kaliro	Electrified	Lamwo	Electrified	Napak	Electrified	Rubanda	Electrified
Bukomansimbi	Electrified	Kalungu	Electrified	Lira	Electrified	Nebbi	Electrified		
Bukwo	Electrified	Kampala	Electrified	Luuka	Electrified	Ngora	Electrified		
Bulambuli	Electrified	Kamuli	Electrified	Luwero	Electrified	Ntoroko	Electrified		
Buliisa	Electrified	Kamwenge	Electrified	Lwengo	Electrified	Ntungamo	Electrified		
Bundibugyo	Electrified	Kanungu	Electrified	Lyantonde	Electrified	Nwoya	Electrified		
Bushenyi	Electrified	Kapchorwa	Electrified	Manafwa	Electrified	Otuke	Electrified		
Busia	Electrified	Kasese	Electrified	Maracha	Electrified	Oyam	Electrified		
Butaleja	Electrified	Katakwi	Electrified	Masaka	Electrified	Pader	Electrified		
Butambala	Electrified	Kayunga	Electrified	Masindi	Electrified	Pallisa	Electrified		

Source: REA 2018: Electrification Status of District Headquarters, Status: 31/12/2017

1.4: Bujagali HPP

Month	Gross Energy Generated (GWh)	Net Plant Energy (Energy sales in GWh)	Auxiliaries Consumption (GWh)	Auxiliaries losses (Main TX) in GWh	Recived From Grid (GWh)+F2:F14	Outage Time(hrs)
Jan-17	146.646	145.600	0.505	0.549	0.0084	37
Feb-17	135.793	134.833	0.461	0.505	0.0057	55
Mar-17	142.274	141.247	0.51	0.52	0.0027	25
Apr-17	134.819	133.832	0.493	0.502	0.0086	302
May-17	142.993	141.97	0.518	0.513	0.0087	14
Jun-17	137.731	136.757	0.489	0.494	0.0081	292
Jul-17	149.652	148.591	0.498	0.568	0.005	231
Aug-17	141.491	140.449	0.493	0.556	0.006	390
Sep-17	132.795	131.835	0.481	0.492	0.013	267
Oct-17	131.414	130.454	0.493	0.479	0.012	280
Nov-17	133.066	132.107	0.486	0.486	0.013	23
Dec-17	138.381	137.381	0.5060	0.504	0.01	10
TOTALS	1667.055	1655.056	5.933	6.168	0.1012	1926

1. Installed Capacity - 255 MW

2. Average dispatched Capacity to UETCL - 192.78 MW

3. Plant Factor - 75.6%

4. Operation Time - 94.2%

5. Commercial Operaton date - 01.08.2012

6. Contracted Capacity to UETCL - 250 MW

1.5: Ishasha SHPP

	Outage Time (hours)			Electricity Generated (MWh)			Electricity Sold (MWh)			Electricity Used Internally (MWh)		
	Peak	Shoulder	Off Peak	Peak	Shoulder	Off Peak	Peak	Shoulder	Off Peak	Peak	Shoulder	Off Peak
January	38.23	113.33	43.22	512.74	179.08	684.86	512.30	178.65	684.08	0.44	0.43	0.78
February	31.78	117.00	50.08	467.23	158.66	608.21	466.77	158.25	607.44	0.46	0.41	0.77
March	37.00	115.67	52.75	553.56	231.22	744.62	553.11	230.82	743.85	0.45	0.40	0.77
April	43.50	116.33	46.92	454.51	149.80	607.13	454.10	149.40	606.40	0.41	0.40	0.73
May	84.42	235.58	81.33	323.23	98.32	375.11	323.01	98.02	374.74	0.22	0.30	0.37
June	73.25	208.75	51.50	320.13	79.94	331.03	319.81	79.55	330.57	0.32	0.39	0.46
July	47.75	128.33	59.83	380.92	80.62	492.27	380.50	80.24	491.54	0.42	0.38	0.73
August	30.67	105.83	31.83	449.40	145.22	548.40	448.93	144.76	547.60	0.47	0.46	0.80
September	35.25	107.25	36.58	632.15	494.03	977.94	631.70	493.58	977.14	0.45	0.45	0.80
October	21.92	137.58	20.08	667.05	507.39	708.51	666.56	506.89	707.80	0.49	0.50	0.71
November	24.58	100.75	31.83	601.34	417.77	830.12	600.85	417.31	829.30	0.49	0.46	0.82
December	12.17	19.25	9.17	531.83	298.36	819.14	531.31	297.83	818.05	0.52	0.53	1.09

Installed Generation Capacity (MW) - 6.4

Contracted Generation Capacity by UETCL (MW) - 6.4

Plant Factor (%) - 29.36

Technical & Commercial Losses (MWh) - Ishasha does not monitor this section

Commercial Operation Date - 2011/03/11

1.6: Power Generated, Exported and used at Kakira

Month	Tdps-1 MWh	Tdps-2 MWh	Total Generation MWh	Export-1 MWh	Export-2 MWh	Total Export MWh	Power Used MWh
Jan-17	11,304.0	17,357.9	28,661.9	7,852.1	10,945.7	18,797.9	9,864.0
Feb-17	2,173.0	14,119.9	16,292.9	1,309.0	8,044.3	9,353.3	6,939.6
Mar-17	107.6	13,200.9	13,308.5	569.8	6,470.9	7,040.6	6,267.9
Apr-17	0.0	10,188.3	10,188.3	3,192.3	1,148.8	4,341.1	5,847.1
May-17	121.0	7,414.5	7,535.5	535.1	2,632.0	3,167.0	4,368.5
Jun-17	0.0	13,521.6	13,521.6	5,568.0	1,391.6	6,959.6	6,562.0
Jul-17	0.0	13,809.4	13,809.4	6,962.8	4.2	6,967.1	6,842.4
Aug-17	1,586.5	16,595.2	18,181.7	7,786.8	2,558.5	10,345.4	7,836.3
Sep-17	10,820.9	4,816.7	15,637.6	3,768.8	3,558.7	7,327.4	8,310.2
Oct-17	5,694.0	19,237.9	24,931.9	5,723.8	10,442.8	16,166.7	8,765.2
Nov-17	5,118.0	16,659.6	21,777.6	3,993.4	9,847.1	13,840.5	7,937.1
Dec-17	12,229.0	19,659.0	31,890.7	9,445.9	12,305.9	21,751.8	10,138.9
TOTAL	49,153.9	166,581.0	215,737.6	56,707.8	69,350.6	126,058.4	89,679.2

1.7: Licenced Power Projects in 2017

Project	Operator	Technology	Location	Capacity (MW)	Date of licensing
Sironko Hydropower Project	Eco Clean Power Limited	Hydro	Sironko	7.1	18-Nov-13
Atari Hydropower Project	Senok Atari (PVT) Limited	Hydro	Kapchorwa	3.25	04-Sep-15
Kabeywa 1 Hydropower Project	Senok Kabeywa 2 (PVT) Limited	Hydro	Bulambuli	6.5	04-Sep-15
Kabeywa 2 Hydropower Project	Senok Kabeywa 1 (PVT) Limited	Hydro	Bulambuli	2	04-Sep-15
Tororo Grid Connected Solar PV project	Tororo PV Power Company Limited	Solar	Tororo	10	01-Aug-13
Mayuge Bagasse Project	Mayuge Sugar Industries Ltd	Bagasse	Mayuge	3	27-Oct-14

1.8: Electricity Generation Projects in Uganda

Company	Project name	Technology	GET Fit	Capacity (MW)	Effective date of License	Original Financial Close Date	Original COD	No. of Amendment to License	Revised Financial Close Date	Revised COD	Transfer of Ownership	Project name	Original Owner	Status of project implementation
West Nile Rural Electrification Company Limited	Nyagak 1	Hydro	No	3.5	12-Mar-03	18-Sep-03	-	3	07-Nov-14	-	No	N/A	N/A	Plant exists
Eskom Uganda Limited	Eskom	Hydro	No	380	01-Apr-03	-	-	0	-	-	No	N/A	N/A	Plant exists
Kakira Sugar Works	Kakira Cogen	Bagasse	No	52	01-Jan-05	-	-	3	01-Sep-15	-	No	N/A	N/A	Plant exists
Kilembe Mines Limited-Tibet Hima (original)	Kilembe	Hydro	No	5	01-Jan-07	30-Jun-07	31-Jan-09	1	30-Jun-10	-	Yes	Tibet Hima Mining Co Limited	Minority	Plant exists
China Shan Sheng Industry (U) International Limited	China	Hydro	No	14	01-Aug-07	-	-	0	-	-	Yes	Kikagati Power limited	Minority	Construction
Bujagali Energy Limited	Bujagali	Hydro	No	250	01-Jun-07	-	-	0	-	-	No	N/A	N/A	Plant exists
ECO Power Uganda Limited	Ishasha	Hydro	No	6.5	01-Jul-07	01-Jul-08	01-Jul-12	1	-	-	No	N/A	N/A	Plant exists
Jacobsen Uganda Company Limited	Jacobsen Namanve	Thermal	No	50	01-Aug-07	-	-	4	-	-	No	N/A	N/A	Plant exists
Hydromax Buseruka Limited	Hydromax Buseruka	Hydro	No	9	01-Nov-07	29-Feb-08	-	1	07-Nov-14	-	No	N/A	N/A	Plant exists
Kinyara Sugar Limited	Kinyara Cogen	Bagasse	No	7.5	01-Jan-08	-	-	0	-	-	No	N/A	N/A	Plant exist
Electro-Maxx (U) Limited	Electro-Maxx	Thermal	No	50	01-Mar-08	01-Mar-09	01-Mar-13	2	01-Mar-09	-	No	N/A	N/A	Plant exists
Tronder Power Limited	Tronder	Hydro	No	13	01-Apr-08	30-Jul-08	-	2	30-Jul-08	-	Yes	Bugoye Hydro Limited	Minority	Plant exists
Africa EMS Mpanga Limited	Africa EMS Mpanga	Hydro	No	18	01-May-08	29-Aug-08	15-Sep-10	2	29-Aug-08	10-Nov-10	No	N/A	N/A	Plant exists

Company	Project name	Technology	GET Fit	Capacity (MW)	Effective date of License	Original Financial Close Date	Original COD	No. of Amendment to License	Revised Financial Close Date	Revised COD	Transfer of Ownership	Project name	Original Owner	Status of project implementation
Kalangala Infrastructure Services Limited	Kalangala	Thermal	No	1.6	01-Jan-09	30-Jun-09	30-Jun-11	2	01-Nov-10	01-Nov-11	No	N/A	N/A	Plant exists
Africa EMS Nyamwamba Limited	Nyamwamba	Hydro	No	9.2	10-Jan-12	10-Jan-13	09-Apr-13	2	01-Oct-15	31-Jan-18	No	N/A	N/A	Construction
Elgon Hydro Siti (Pvt) Limited	Siti I	Hydro	Yes	5	01-Jun-14	28-Nov-14	20-Jul-16	2	26-Jul-15	23-Jul-17	No	N/A	N/A	Plant Exists
Elgon Hydro Siti (Pvt) Limited	Siti II	Hydro	Yes	16.5	01-Jun-14	28-Nov-14	15-Aug-16	2	18-Nov-16	22-Mar-18	No	N/A	N/A	No Construction
Greenwus Energy Africa Ltd	Kakaka	Hydro	No	5	01-Jun-14	28-Nov-14	19-Aug-16	2	21-Dec-17	17-Oct-19	No	N/A	N/A	No Construction
Lubilia Kawembe Hydro Limited	Lubilia	Hydro	Yes	5.4	01-Jun-14	28-Nov-14	19-Aug-16	2	08-Aug-16	23-Jul-17	No	N/A	N/A	No Construction
Rwimi EP Company Limited	Rwimi	Hydro	Yes	5.54	01-Jun-14	28-Nov-14	01-Oct-16	2	30-Nov-15	29-Sep-17	No	N/A	N/A	Construction
Hydromax (Nkusi) Limited	Waki	Hydro	Yes	4.8	28-Nov-14	25-Aug-15	19-Aug-17	2	17-Nov-16	24-Oct-18	No	N/A	N/A	Construction
Muvumbe Hydro (U) Limited	Muvumbe	Hydro	Yes	6.5	28-Nov-14	27-May-15	05-Jul-19	1	25-Aug-15	24-Oct-18	No	N/A	N/A	Plant Exists
ARPE Limited	Achwa I	Hydro	No	42	23-Jan-15	11-Jun-17	10-Dec-19	0	-	-	Yes	Uganda Hydro Holdco	Minority	No Construction
ARPE Limited	Achwa II	Hydro	No	41	23-Jan-15	22-Oct-15	08-Feb-18	1	30-Apr-16	21-Apr-18	Yes	Uganda Hydro Holdco	Minority	No Construction
Albatros Energy (U) Limited	Albatros	Thermal	No	50	02-Mar-15	28-Aug-16	01-Mar-20	0	-	-	No	N/A	N/A	No Construction
Jelco Nengo Hydro Power Company Limited (revoked)	Nengo Bridge	Hydro	No	6.7	15-Apr-15	12-Oct-15	15-May-17	0	-	-	No	N/A	N/A	No Construction
Butama Hydro Electricity Ltd	Sindila	Hydro	Yes	5.25	04-Jun-15	28-Nov-15	27-Jul-18	1	30-Sep-16	04-Dec-17	No	N/A	N/A	Construction

Company	Project name	Technology	GET Fit	Capacity (MW)	Effective date of License	Original Financial Close Date	Original COD	No. of Amendment to License	Revised Financial Close Date	Revised COD	Transfer of Ownership	Project name	Original Owner	Status of project implementation
MSS Xsabo Power Limited	Xsabo	Solar	No	20	26-Aug-15	31-Dec-16	15-Jul-16	4	25-Nov-16	30-Dec-18	No	N/A	N/A	No Construction
MSS Xsabo Power Limited (revoked)	Xsabo	wind	No	20	27-Aug-15	13-Mar-16	15-Sep-17	0	10-May-17	10-Jun-18	No	N/A	N/A	No Construction
Access Energy (U) Limited	Soroti Solar-PV	Solar	Yes	10	14-Sep-15	20-Jan-16	14-Aug-16	1	-	12-Dec-16	Yes	-	Minority	Plant Exists
Tororo Solar North Limited	Tororo Solar-PV	Solar	Yes	10	14-Sep-15	13-Dec-15	14-Aug-16	2	30-Aug-16	30-Sep-17	No	N/A	N/A	Plant Exists
Genmax Nyagak Limited	Nyagak III	Hydro	No	5.5	10-Dec-15	27-Sep-16	09-Apr-19	2	30-Jul-17	-	No	N/A	N/A	No Construction
Mayuge Sugar Industries Ltd	Mayuge	Bagasse	No	9.2	15-Sep-15	13-Mar-15	30-Jun-16	0	-	-	No	N/A	N/A	Plant exists
Ziba Limited	Kyambura	Hydro	Yes	7.6	15-Sep-15	13-Mar-16	15-Oct-17	1	30-Jun-17	28-Feb-20	No	N/A	N/A	No Construction
Sugar and Allied Industries Limited	Kaliro	Bagasse	No	6.9	02-Oct-15	-	01-Dec-15	0	-	-	No	N/A	N/A	Construction
Kikagati Power Company Limited	Kikagati	Hydro	Yes	16	-	-	-	4	10-Jul-18	30-Jun-20	Yes	Uganda Hydro Holdco	Minority	Construction
Ndugutu Power Company (U) Ltd	Ndugutu	Hydro	yes	4.8	24-Jun-16	28-Feb-17	23-Feb-20	3	15-Mar-18	-	No	N/A	N/A	Construction
Mayuge Sugar Industries Ltd	Mayuge	Bagasse	No	23	15-Feb-16	12-Aug-16	14-Dec-17	0	-	-	No	N/A	N/A	No Construction
Timex Bukinda Hydro (U) Limited	Bukinda	Hydro	No	6.5	24-Jun-16	20-Dec-16	15-Apr-16	2	13-Jun-18	23-Jun-19	No	N/A	N/A	No Construction
Emerging Power Limited	-	Solar	No	10	24-Jun-16	20-Dec-16	-	2	19-Dec-17	23-Dec-18	No	N/A	N/A	No Construction
PA Technical Services Limited	Nkusi	Hydro	No	9.6	25-Jul-16			1	19-Jul-17	15-Sep-19	No	N/A	N/A	No Construction
Mahoma Uganda Limited	Mahoma	Hydro	No	2.7	05-Aug-16	30-Jan-17	04-Aug-18	0	-	-	Yes			No Construction

Company	Project name	Technology	GET Fit	Capacity (MW)	Effective date of License	Original Financial Close Date	Original COD	No. of Amendment to License	Revised Financial Close Date	Revised COD	Transfer of Ownership	Project name	Original Owner	Status of project implementation
Sugar Corporation of Uganda Limited (Renewal)	-	Bagasse	No	9.5	01-Jan-16	-	-	0	-	-	No	N/A	N/A	Plant Exists
Tibet Hima Mining Co. Limited (Renewal)	-	Hydro	No	5	01-Jan-16	-	-	0	-	-	Yes	N/A	N/A	Plant Exists
Elemental Energy Limited	Nyamabuye	Hydro	No	7	07-Oct-16	03-Jul-17	06-Apr-19	1	10-Jun-18	10-Mar-20	No	N/A	N/A	No Construction
Nyamagasani 2 HPP Limited	Nyamagasani 2	Hydro	yes	6	01-Sep-16	12-Mar-16	13-Jan-19	2	30-Jan-18	-	No	N/A	N/A	No Construction
Rwenzori Hydro Private Limited	Nyamasani 1	Hydro	Yes	15	07-Oct-16	04-May-17	06-Dec-18	2	30-Jan-18	-	No	N/A	N/A	No Construction
UEGCL	Karuma	Hydro	NO	600	01-Jan-17		16-Dec-18	0	-	-	No	N/A	N/A	Construction
UEGCL	Isimba	Hydro	No	183	01-Jan-17		30-Aug-18	0	-	-	No	N/A	N/A	Construction
Jacobsen Uganda Company Limited (renewal)	JUPPCL	Thermal	No	50	15-Sep-17	-	-	0	-	-	No	N/A	N/A	Plant Exists
SM Hydro Limited	Muyembe	Hydro	No		30-Nov-17	27-Jul-18	29-Apr-20	0	-	-	No	N/A	N/A	No Construction
Tororo Solar North Limited	-	Solar	No	10	22-Dec-17	19-Jun-18	21-Mar-19	0	-	-	No	N/A	N/A	No Construction
Electro-Maxx (U) Limited	-	Thermal	No	50	01-Oct-18			0	-	-	No	N/A	N/A	Plant Exists
SCOUL	SCOUL	Bagasse	No	25				0	-	-	No	N/A	N/A	No Construction
Senok Kabeywa One (PVT) Ltd	Kabeywa 1	Hydro	No	6.5				0	-	-	No	N/A	N/A	No Construction
Senok Kabeywa Two (PVT) Ltd	Kabeywa 2	Hydro	No	2				0	-	-	No	N/A	N/A	No construction
Senok Atari (PVT) Ltd	Atari	Hydro	No	3.25				0	-	-	No	N/A	N/A	No construction
Eco Power (U) Ltd	Sironko HPP	Hydro	NO	7.1				0	-	-	No	N/A	N/A	No Construction

1.9: Planned Electricity Generation Capacity per plant

Generation Plant	Developer	Fuel	Year	ERA License	GET FIT	Status	Planned Capacity (MW)
Large Hydro							783
Isimba	GoU, Lead Agency: UEGCL	Hydro	2018			Under Construction	183
Karuma	GoU, Lead Agency: UEGCL	Hydro	2019			Under Construction	600
Small Hydro							233.19
Muvumbe	Muvumbe Hydro (U) Limited	Hydro	2017	Yes	Yes	Under Construction	6.5
Siti I	Elgon Hydro Siti (Pvt) Limited	Hydro	2017	Yes	Yes	Under Construction	6.1
Rwimi	Eco Power (Uganda) Limited	Hydro	2017	Yes	Yes	Under Construction	5.54
Lubilia	Lubilia Kawembe Hydro Limited	Hydro	2017	Yes	Yes	Under Construction	5.4
Waaki	Hydromax Limited	Hydro	2017	Yes	Yes	Under Construction	4.8
Achwa II	Uganda Hydro Holdco Limited	Hydro	2018	Yes		Construction is yet to commence	41
Kikagati	Uganda Hydro Holdco Limited	Hydro	2018	Yes	Yes	Construction is yet to commence	16
Siti II	Elgon Hydro Siti (Pvt) Limited	Hydro	2018	Yes	Yes	Under Construction	16
Nyamagasani I	Rwenzori Hydro Private Limited	Hydro	2018	Yes	Yes	Construction is yet to commence	15
Nkusi	PA Technical Services Limited	Hydro	2018	Yes	Yes	Under Construction	9.6
Nyamwamba	Africa EMS Nyamwamba Limited	Hydro	2018	Yes	Yes	Under Construction	9.2
Kyambura	Ziba Limited	Hydro	2018	Yes	Yes	Under Construction	7.6
Nyamabuye	Elemental Energy Limited	Hydro	2018	Yes		Feasibility Study Ongoing	7
Nengo Bridge	Jelco Nengo Hydro Power Company Ltd.	Hydro	2018	Yes		Feasibility Study Completed	6.7
Bukinda	Timex Bukinda Hydro (U) Limited	Hydro	2018	Yes		Feasibility Study Completed	6.5
Sindila	Butama Hydro Electricity Company Ltd.	Hydro	2018	Yes	Yes	Under Construction	5.25
Kakaka	Greenewus Energy Africa Limited	Hydro	2018	Yes		Construction is yet to commence	5
Nyamagasani II	Nyamagasani 2 HPP Limited	Hydro	2018	Yes	Yes	Construction is yet to commence	5
Ndugutu	Ndugutu Power Company (U) Ltd.	Hydro	2018	Yes	Yes	Construction is yet to commence	4.8
Mahoma	Mahoma Uganda Limited	Hydro	2018	Yes		Construction is yet to commence	2.7
Achwa I	Uganda Hydro Holdco Limited	Hydro	2019	Yes		Construction is yet to commence	42

Generation Plant	Developer	Fuel	Year	ERA License	GET FIT	Status	Planned Capacity (MW)
Nyagak III	Genmax Nyagak Limited	Hydro	2019	Yes		Construction is yet to commence	5.5
Co-Generation							23
Mayuge Sugar	Mayuge Sugar Industries Limited	Bagasse	2018	Yes		Feasibility Study Completed	23
Solar and Wind							60
Xsabo Solar	MSS Xsabo Power Limited	Solar	2017	Yes		Feasibility Study Ongoing	20
Tororo Solar	Tororo Solar North Limited	Solar	2017	Yes	Yes	Under Construction	10
Xsabo Wind	MSS Xsabo Power Limited	Wind	2018	Yes		Feasibility Study Ongoing	20
Mayuge Solar	Emerging Power Limited	Solar	2018	Yes		Feasibility Study Ongoing	10
Planned Generation Capacity							1,099

Source: ERA 2016, GET FIT Annual Report 2016, Status: 31/12/2016

1.10: Monthly UETCL electricity purchases across all suppliers in MWh

Company	Jan	Feb	Mar	Apr	May	Jun	Jul	Aug	Sep	Oct	Nov	Dec	Sub-total
Eskom+C23:O31	134,521	123,554	129,846	124,669	130,116	130,711	138,094	134,309	120,432	118,517	119,467	124,091	1,528,327
Bujagali	145,600	134,833	141,247	133,832	141,970	136,757	148,591	140,449	131,836	130,453	132,107	137,381	1,655,057
KCCL	3,283	3,267	3,780	4,760	5,587	4,936	4,888	6,215	5,855	6,180	5,815	4,897	59,461
KML	1,735	1,857	2,128	2,229	2,428	2,211	2,104	2,163	2,098	2,276	2,204	2,183	25,616
Bugoye-Tronder	2,994	1,316	-	-	-	-	-	-	4,781	8,939	8,779	5,361	32,169
Mpanga	1,860	1,402	2,187	2,222	2,983	893	909	2,507	9,886	11,361	12,148	6,425	54,784
Electromax	8,828	19,922	18,804	17,738	17,758	13,166	12,907	11,719	7,535	5,571	5,127	5,300	144,374
Jacobsen Plant-Namanve	5,086	8,662	10,979	7,298	6,127	8,556	10,910	7,561	5,429	5,846	5,126	5,239	86,820
Ishaha Ecopower	1,375	1,232	1,528	1,210	796	730	952	1,141	2,102	1,881	1,847	1,647	16,440
Kakira SW	18,798	9,376	7,041	4,341	3,167	6,960	6,967	10,345	7,327	16,167	13,841	21,752	126,081
Kinyara	771	904	1,004	758	834	641	730	706	513	7	187	716	7,770
Buseruka Hydromax	2,385	1,975	2,893	2,439	2,292	2,535	3,925	4,240	4,730	5,113	5,289	3,426	41,242
SAIL Kaliro	2,539	1,366	550	106	231	274	1,034	1,175	1,988	2,728	1,938	1,995	15,923
Access Solar	1,380	1,492	1,671	1,472	1,358	1,196	1,141	1,378	1,266	1,372	1,227	1,515	16,470
Muvumbe	-	-	889	1,520	2,546	889	744	889	1,825	2,526	2,662	1,543	16,033
Elgon Hydro Siti	-	-	-	46	706	552	421	1,395	2,108	2,581	2,658	962	11,428
Tororo Solar	-	-	-	-	-	-	-	628	1,389	1,534	1,462	1,585	6,598
Rwimi	-	-	-	-	-	-	-	-	-	1,755	3,202	1,950	6,906
KPLC	718	3	717	260	901	427	181	1,465	1,072	1,719	997	1,103	9,562
Rwanda	313	313	341	314	313	296	339	315	282	317	330	372	3,847
Total	332,185	311,473	325,604	305,214	320,114	311,730	334,836	328,600	312,454	326,843	326,411	329,442	3,864,907

1.11: UETCL monthly electricity sales in MWh (2017)

Company	Jan	Feb	Mar	Apr	May	Jun	Jul	Aug	Sep	Oct	Nov	Dec	Total
Umeme	285,352	256,321	278,242	266,241	278,675	265,469	283,544	289,455	273,864	284,667	283,966	286,570	3,332,368
Ferdsult	2,316	2,577	-	-	-	-	-	-	-	-	-	-	4,893
Kilembe Investment (KIL)	442	414	485	464	485	437	466	448	474	533	485	500	5,635
Budibugyo-(BECSL)	288	247	256	226	233	226	233	220	202	248	261	287	2,928
Pader-Abim-(PACMECS)	189	205	198	165	127	181	199	177	146	171	205	186	2,151
KREC	268	264	329	255	258	229	312	286	309	289	328	355	3,482
UEDCL	1,324	1,114	4,065	3,443	3,676	3,527	4,301	4,119	3,960	7,193	4,623	4,814	46,160
Exports	28,413	37,977	29,492	23,530	24,487	29,456	32,820	21,716	22,555	22,304	21,320	22,556	316,628
TOTAL	318,592	294,119	313,067	294,324	307,941	299,525	321,875	316,421	301,510	315,405	311,188	315,268	3,714,245

1.12: Monthly Electricity exports in MWh (2017)

Country	Jan	Feb	Mar	Apr	May	Jun	Jul	Aug	Sep	Oct	Nov	DEC	Total
Kenya	20,874	31,574	22,652	17,245	17,629	21,642	23,035	13,356	14,194	14,623	14,263	14,788	225,876
Tanzania	7,199	5,757	6,171	5,148	5,614	6,779	8,526	7,370	7,207	6,569	5,872	6,959	79,171
Rwanda	158	440	469	950	1,039	850	1,078	807	961	928	989	610	9,279
DRC	182	207	200	187	205	185	181	183	193	184	197	199	2,303
TOTAL	28,413	37,977	29,492	23,530	24,487	29,456	32,820	21,716	22,555	22,304	21,320	22,556	316,628

1.13: Operational Transmission Lines 2017

Line Name	Year of Commissioning	Year Upgrade	Structure Type	Voltage in kV	Circuits	Line Rating (MVA)	Length in km
66 kV Lines							
Nalubale - Lugazi	1963		Lattice Tower	66	1	10.6	30.5
132 kV Lines							
Bujagali - Tororo	1954	2012	Lattice Tower	132	2	78	116.2
Nalubale - Namanve	1954		Lattice Tower	132	1	147	57.2
Namanve - Kampala North	1954		Lattice Tower	132	1		12.2
Tororo - Lessos	1954		Lattice Tower	132	2	78	8.8
Kampala North - Mutundwe	1959		Lattice Tower	132	2	79.1	9.3
Kabulasoke - Masaka West	1963		Wooden Poles	132	1	63.1	61.2
Kabulasoke - Nkonge	1963		Wooden Poles	132	1	63.1	76.6
Rugonjo - Nkenda	1963		Wooden Poles	132	1	63.1	41.0
Mutundwe - Kabulasoke	1963	2015	Wooden Poles	132	1	63.1	84.3
Nkonge - Rugonjo	1963		Wooden Poles	132	1	63.1	99.7
Opuyo - Lira	1963		Wooden Poles	132	1	63.1	115.3
Tororo - Opuyo	1963		Wooden Poles	132	1	63.1	147.4
Masaka West - Mutukula	1994		Lattice Tower	132	1	73.8	85.0
Masaka West - Mbarara North	1995		Lattice Tower	132	1	151.6	130.4
Lugogo - Kampala North	1997		Lattice Tower	132	2	73.2	5.1
Lugogo - Mutundwe	1997		Lattice Tower	132	2	180	10.1
Nalubale - Lugogo	1998		Lattice Tower	132	2	180.6	70.0
Nalubale - Kiira	2007		Lattice Tower	132	2		0.8
Nalubale - Kiira (2)	2007		Lattice Tower	132	2		0.8
Nalubale - Kiira (3)	2007		Lattice Tower	132	2		0.8

Line Name	Year of Commissioning	Year Upgrade	Structure Type	Voltage in kV	Circuits	Line Rating (MVA)	Length in km
Bujagali - Nalubaale	2011		Lattice Tower	132	2	205.8	8.4
Kawanda - Mutundwe	2012		Lattice Tower	132	2	457	17.3
Namungoona T-Off	2013		Wooden Poles	132	1		0.1
Queensway T-Off	2017		Cable Tunnel	132	1		0.2
220 kV Lines							
Bujagali - Kawanda	2012		Lattice Tower	220	2	205.8	71.1

Source: UETCL GIS Database 2017, Status: 31/12/2017

1.14: Transmission Lines under Construction 2017

Line Name	Planned Year of Commissioning	Status	Structure Type	Voltage in kV	Circuits	Length in km
132 kV Lines						
Isimba - Bujagali	2018	Under Construction, RAP Implementation ongoing	Lattice Tower	132	2	39.9
Mbarara South - Nkenda	2018	Under Construction, RAP Implementation ongoing	Lattice Tower	132	2	153.2
Opuyo - Lira (2)	2018	Under Construction, RAP Implementation ongoing	Lattice Tower	132	2	115.2
Tororo - Opuyo (2)	2018	Under Construction, RAP Implementation ongoing	Lattice Tower	132	2	147.4
Karuma - Lira	2018	RAP Implementation ongoing	Lattice Tower	132	2	75.6
Fort Portal Interconnector (1)	2018			132		0.4
Fort Portal Interconnector (2)	2018			132		0.4
Mbarara Interconnector	2018			132		0.9
220 kV Lines						
Bujagali - Tororo (2)	2018	Under Construction, RAP Implementation ongoing	Lattice Tower	220	2	118.1
Fort Portal - Hoima	2018	Under Construction, RAP Implementation ongoing	Lattice Tower	220	2	171.6
Kawanda - Masaka	2018	Under Construction, RAP Implementation ongoing	Lattice Tower	220	2	137.1
Mbarara South - Mirama	2018	Under Construction, RAP Implementation ongoing	Lattice Tower	220	2	56.6
Mirama - Birembo	2018	Under Construction, RAP Implementation ongoing	Lattice Tower	220	2	7.4
Nkenda - Fort Portal	2018	Under Construction, RAP Implementation ongoing	Lattice Tower	220	2	52.8
Tororo - Lessos (2)	2018	Under Construction, RAP Implementation ongoing	Lattice Tower	220	2	8.9
400 kV Lines						
Kafu - Kawanda	2018	RAP Implementation ongoing	Lattice Tower	400	2	165.3
Karuma - Kafu	2018	RAP Implementation ongoing	Lattice Tower	400	2	83

Source: UETCL GIS Database 2017, Status: 31/12/2017

1.15: Transmission Substations (Status: December 2017)

Substation Name	Voltage	Status	Year of Commissioning	Year Upgrade	Latitude	Longitude
Operational						
Nalubale	132 kV / 66 kV / 33 kV	Operational	1954		0.444160991	33.18217655
Lugazi	66 kV / 11 kV	Operational	1963		0.376929039	32.93573756
Nkonge	132 kV / 33 kV	Operational	1970		0.229368261	31.18376348
Kampala North	132 kV / 33 kV / 11 kV	Operational	1972		0.347088479	32.57534378
Kabulasoke	132 kV / 33 kV	Operational	1974		0.157983804	31.82011736
Lira	132 kV / 33 kV	Operational	1974	2016	2.242212526	32.8857708
Tororo	132 kV / 33 kV	Operational	1974	2018	0.637814394	34.11798736
Lugogo	132 kV / 33 kV / 11 kV	Operational	1991		0.323750382	32.60681224
Masaka West	132 kV / 33 kV	Operational	1991	2018	-0.329338667	31.68442643
Mbarara North	132 kV / 33 kV	Operational	1991		-0.597069761	30.61105039
Mutundwe	132 kV / 33 kV	Operational	1991	2025	0.293609444	32.5338632
Nkenda	132 kV / 33 kV	Operational	1991	2016	0.255513522	30.11677405
Opuyo	132 kV / 33 kV	Operational	1993	2019	1.677252332	33.67711892
Rugonjo	132 kV / 33 kV	Operational	2006		0.203474588	30.78516515
Kira	132 kV / 11 kV	Operational	2007		0.450095	33.184521
Namanve	132 kV / 33 kV	Operational	2007		0.380824558	32.67914938
Namungoona	132 kV / 33 kV	Operational	2009	2012	0.335604363	32.53948091
Bujagali	220 kV / 132 kV / 33 kV	Operational	2012	2016	0.501542576	33.13577091
Kawanda	220 kV / 132 kV / 33 kV	Operational	2012	2016	0.413572447	32.54152128
Queensway	132 kV / 33 kV	Operational	2017		0.305067172	32.57860162
Under Construction						
Fort Portal	132 kV / 33 kV	Under Construction	2018		0.60128453	30.30559532
Hoima	132 kV / 33 kV	Under Construction	2018		1.478264546	31.32968617

Substation Name	Voltage	Status	Year of Commissioning	Year Upgrade	Latitude	Longitude
Isimba	132 kV	Under Construction	2018		0.769599716	33.04159131
Karuma	400 kV / 132 kV	Under Construction	2018		2.246590014	32.26760417
Mbarara South	220 kV / 132 kV / 33 kV	Under Construction	2018		-0.597354323	30.60609083
Mirama	220 kV / 132 kV / 33 kV	Under Construction	2018		-1.001073517	30.4508451
Mukono Industrial Park	220 kV / 132 kV / 33 kV	Under Construction	2019		0.369590988	32.826033
Namanve South Industrial Park	132 kV / 33 kV	Under Construction	2019		0.345149846	32.6947048

Source: UETCL GIS Database 2017, Status: 31/12/2017

1.16: Electricity Purchases by Distribution Companies in MWh (2017)

Year	Quarter	UMEME	UEDCL	PACMECSL	BECS	KIL	KRECS	KIS***	WENRECO***	Kisiizi Hospital***
2017	Q4	858,216	13,594		796	1,518	972		4,732	378
2017	Q3	846,856	12,425		643	1,389	907	499	4,010	267
2017	Q2	810,385	10,732	473	685	1,386	742	406	3,081	247
2017	Q1	820,291	3,698	593	790	1,370	861	522	3,090	331

Source: ERA Comprehensive Electricity Supply Industry Database

Note: Data subject to regular update as reconciliations occur.

Electricity sales by distribution companies in MWh (2017)

*** Offgrid (own generations)

1.17: Electricity Sales by Distribution Companies in MWh (2017)

Year	Quarter	UMEME	UEDCL	PACMECSL	BECS	KIL	KRECS	KIS*	WENRECO	Kisiizi Hospital	Kabalega Hydromax
2017	Q4	708,481	9,948		594	1,222	696		3,792	182	42
2017	Q3	705,928	8,446		496	1,083	633	227	3,163	138	46
2017	Q2	674,161	7,726	434	527	1,068	510	219	2,597	247	44
2017	Q1	674,019	2,883	518	634	1,059	592	236	2,390	322	43

Source: ERA Comprehensive Electricity Supply Industry Database

Note: - Data subject to regular update as reconciliations occur.

* Off grid distribution

1.18: Number of Customers (2014-2017)

Year	Umeme	UEDCL	PACMECS	BECS	KIL	KRECS	WENRECO	KIS*	Kabalega Hydromax*	FESL
2014	2510693	0	6755	25916	21262	5548	17872	0	0	58045
2015	2992662	24202	8740	25927	30732	7839	29512	5033	0	87637
2016	3325742	32797	10059	26981	37731	10702	40044	9189	0	48394
2017	4,181,079	144,448	5470	31429	45535	14297	26630	7541	618	0

Source: ERA Comprehensive Electricity Supply Industry Database

Note: Data subject to regular update as reconciliations occur.

1.19: Number of Employees in various distribution companies (2014-2017)

Year	Umeme	PACMECS	BECS	KIL	UEDCL	KRECS	KIS*	WENRECO	FESL
2014	5552	63	61	70	289	43	0	271	186
2015	5486	99	124	100	292	56	69	255	377
2016	5551	110	139	143	227	64	76	420	379
2017	5779	61	136	141	912	83	40	294	0

Source: ERA Comprehensive Electricity Supply Industry Database

Note: Data subject to regular update as reconciliations occur.

1.20: Licenses to Possess and Use Radiation Sources for 2017

Name of Facility	License Number	Date of Issue	Date of Expiry
CORSU	AEC/PU/1110/02	10/01/2017	09/01/2018
Murchison bay hospital	AEC/PU/1012/02	10/01/2017	09/01/2019
Office of the Auditor General	AEC/PU/1386	11/01/2017	10/01/2019
Medical Imaging Consultants	AEC/PU/1387	13/01/2017	12/01/2019
Mt. Elgon Hospital	AEC/PU/1388	13/01/2017	12/01/2019
Discovery Medical Centre	AEC/PU/1167/01	21/01/2017	20/01/2019
Mbarara Medical Specialists Clinic	AEC/PU/1389	20/01/2017	19/01/2019
Kampala Imaging Centre-Ngabo	AEC/PU/1041/02	02/02/2017	01/02/2019
Kampala Imaging Centre-Ngabo	AEC/PU/1114/02	02/02/2017	01/02/2018
Kampala Imaging Centre-Ngabo	AEC/PU/1042/03	02/02/2017	01/02/2018
St. Ambrose Charity Health Centre	AEC/PU/1390	10/02/2017	09/02/2019
Double Care Medical Centre	AEC/PU/1391	14/02/2017	13/02/2019
Mbarara Clinic & Diagnostic Centre	AEC/PU/1392	17/02/2017	16/02/2019
City Medicals-Hoima	AEC/PU/1393	17/02/2017	16/02/2019
China Wuyi Company Limited	AEC/PU/1394	17/02/2017	16/02/2019
Midas Touch Medical Services-Kyenjojo	AEC/PU/1169/01	20/02/2017	21/02/2019
Holy innocent Children's Hospital	AEC/PU/1395	21/02/2017	20/02/2019
X-ray Care and Ultra Sound Limited	AEC/PU/1056/02	22/02/2017	21/02/2019
Kuluva Hospital	AEC/PU/1396	23/02/2017	22/02/2019
Benedict Medical Centre	AEC/PU/1245/01	24/02/2017	23/02/2018
St. Francis Hospital Nkokonjeru Hospital	AEC/PU/1397	28/02/2017	27/02/2019
Mbarara Diagnostic Centre	AEC/PU/1398	01/03/2017	28/03/2019
X-ray Care & Ultra Sound Centre Ltd	AEC/PU/1170/01	03/03/2017	02/03/2019
Civicon (U) Ltd	AEC/PU/1048/02	09/03/2017	08/03/2019
Divine Mercy Hospital Mbarara	AEC/PU/1399	14/03/2017	13/03/2019
UMC Victoria Hospital Bukoto	AEC/PU/1400	15/03/2017	14/03/2019
Orient Medical Centre	AEC/PU/1401	16/03/2017	15/03/2019

Name of Facility	License Number	Date of Issue	Date of Expiry
Mt. Elgon Hospital	AEC/PU/1152/02	17/03/2017	16/03/2018
Mt. Elgon Hospital	AEC/PU/1158/01	17/03/2017	16/03/2018
Lira Medical Diagnostic Centre	AEC/PU/1404	20/03/2017	19/03/2019
China Railway No.3 Engineering Group	AEC/PU/1403	20/03/2017	19/03/2019
The Clinic at the mall	AEC/PU/1176/01	20/03/2017	19/03/2019
Arua Regional Referral Hospital	AEC/PU/1402	21/03/2017	20/03/2018
Arua Regional Referral Hospital	AEC/PU/1405	21/03/2017	20/03/2018
Rugyeyo Community Hospital	AEC/PU/1407	31/03/2017	30/03/2019
Medik Hospital	AEC/PU/1165/01	06/04/2017	05/04/2019
Mbale Regional Referral Hospital	AEC/PU/1408	07/04/2017	06/04/2019
Remesta Diagnostics	AEC/TRANS/PU/1271-003	06/04/2017	05/10/2019
The Clinic at the mall	AEC/PU/1177/02	05/04/2017	04/04/2018
Amos Diaries Limited	AEC/RAD-FREE/0001	10/04/2017	-
Abii Clinic	AEC/PU/1409	11/04/2017	10/04/2019
United Medicare	AEC/PU/1406	12/04/2017	11/04/2019
Apac Medical Centre	AEC/PU/1410	12/04/2017	11/04/2019
Bank of Uganda Clinic	AEC/PU//1038/02	13/04/2017	12/04/2019
Uganda Heart institute	AEC/PU/1018/04	18/04/2017	17/04/2019
Henrob Medical Centre	AEC/PU/1178/01	25/04/2017	24/04/2019
Kampala Hospital	AEC/PU/1413	25/04/2017	24/04/2018
Zhongomei Engineering Group Limited	AEC/PU/1412	25/04/2017	24/04/2019
Case Hospital	AEC/PU/1124/03	28/04/2017	27/04/2018
Case Hospital	AEC/PU/1197/02	28/04/2017	27/04/2018
Case Hospital	AEC/PU/1414	28/04/2017	27/04/2019
Kagando Hospital	AEC/PU/1415	04/05/2017	03/05/2019
Surgical Centre Mbarara	AEC/PU/1416	05/05/2017	04/05/2019
Byansi Clinic	AEC/PU/1185/01	05/05/2017	04/05/2019
Mayanja Memorial Hospital	AEC/ PU /1077/02	05/05/2017	04/05/2019

Name of Facility	License Number	Date of Issue	Date of Expiry
Gulu Independent Hospital	AEC/ PU /1163/01	05/05/2017	04/05/2019
Itojo Hospital	AEC/ PU /1418	09/05/2017	08/05/2019
NSSF	AEC/ PU /1417	10/05/2017	09/05/2019
Bugiri Hospital	AEC/ PU /1419	16/05/2017	15/05/2019
China Uganda Friendship Hospital	AEC/ PU /1420	16/05/2017	15/05/2018
China Uganda Friendship Hospital	AEC/ PU /1421	16/05/2017	15/05/2019
China Uganda Friendship Hospital	AEC/ PU /1243	16/05/2017	15/05/2018
Shalom Medical Diagnostic Centre	AEC/PU/1422	22/05/2017	21/05/2019
Amai Community Hospital	AEC/PU/1423	22/05/2017	21/05/2019
International Hospital Kampala	AEC/PU/1268/01	22/05/2017	21/05/2018
Ecurie Mengo Hospital	AEC/PU/1189/01	26/05/2017	25/05/2018
Ecurie Mengo Hospital	AEC/PU/1424	26/05/2017	25/05/2019
Kampala Serena Hotel	AEC/PU/1200/01	30/05/2017	29/05/2019
Aga Khan University Hospital Medical Centre	AEC/PU/1003/03	30/05/2017	29/05/2019
CORSU	AEC/PU/1031/02	31/05/2017	30/05/2019
Basils Dental Clinic Limited	AEC/PU/1180/01	31/05/2017	30/05/2019
Ryan HealthCare Ltd	AEC/PU/1425	07/06/2017	06/06/2018
Bwera General Hospital	AEC/PU/1426	07/06/2017	06/06/2019
Rippon Medical Services	AEC/PU/1175/01	07/06/2017	06/07/2019
Kitagata General Hospital	AEC/PU/1427	08/06/2017	07/06/2019
Kamuli Mission Hospital	AEC/PU/1428	08/06/2017	07/06/2019
Moroto Regional Referral Hospital	AEC/PU/1429	08/06/2017	07/06/2019
Rugarama Hospital	AEC/PU/1148/01	14/06/2017	13/06/2019
Lubaga Hospital	AEC/PU/1276/01	15/06/2017	14/06/2018
Lubaga Hospital	AEC/PU/1430	15/06/2017	14/06/2019
Lubaga Hospital	AEC/PU/1431	15/06/2017	14/06/2018
Kisoro Hospital	AEC/PU/1432	20/06/2017	19/06/2019
St. Joseph's Hospital Kitgum	AEC/PU/1433	21/06/2017	20/06/2019

Name of Facility	License Number	Date of Issue	Date of Expiry
Bank of Uganda-Mbale	AEC/PU/1434	21/06/2017	22/06/2019
Bank of Uganda-Jinja	AEC/PU/1435	21/06/2017	22/06/2019
Bank of Uganda-Gulu	AEC/PU/1436	21/06/2017	22/06/2019
Bank of Uganda-Mbarara	AEC/PU/1437	21/06/2017	22/06/2019
Bank of Uganda-Kampala	AEC/PU/1039/02	21/06/2017	22/06/2019
Lira Diagnostic X-ray Centre	AEC/PU/1053/02	22/06/2017	21/06/2019
Mid-town Imaging Centre	AEC/PU/1202/01	22/06/2017	21/06/2019
Dr. Ambrosali Memorial Hospital	AEC/PU/1438	22/06/2017	21/06/2019
Mukono Imaging Centre	AEC/PU/1060/02	27/06/2017	26/06/2019
International Hospital Kampala	AEC/PU/1138/03	28/06/2017	27/06/2018
International Hospital Kampala	AEC/PU/1213/03	28/06/2017	27/06/2019
Kyadondo Medical Centre	AEC/PU/1194/01	28/06/2017	27/06/2019
DFCU Ltd	AEC/PU/1183/01	29/06/2017	28/06/2019
DFCU Ltd	AEC/PU/1184/01	29/06/2017	28/06/2019
St. Peter's Clinic Kiboga	AEC/PU/1210/01	30/06/2017	29/06/2019
Bwino Ventures	AEC/PU/1209/01	07/07/2017	06/07/2019
Kamuli Health Care and Emergency	AEC/PU/1359	16/09/2016	15/09/2018
Friendship Hospital	AEC/PU/1439	14/07/2017	13/07/2019
Uganda Institute of Allied Health & Management sciences	AEC/PU/1441	19/07/2017	18/07/2019
Newtown Medical Centre	AEC/PU/1227/01	23/07/2017	22/07/2019
Pallisa General	AEC/PU/1440	24/07/2017	23/07/2019
ECURIE Mengo Hospital	AEC/PU/1188/01	31/07/2017	30/07/2019
Cure Children's Hospital	AEC/PU/1064/02	31/07/2017	30/07/2018
Yotkom Medical Centre	AEC/PU/1442	04/08/2017	03/08/2019
Cure 'O' Sity Health Care Ltd	AEC/PU/1443	08/08/2017	07/08/2019
Great Mission Medical Centre	AEC/PU/1444	09/08/2017	08/08/2019
Kalson Medical Centre	AEC/PU/1445	10/08/2017	09/08/2019
Roko Construction Company Limited	AEC/PU/1168/01	11/08/2017	10/08/2019

Name of Facility	License Number	Date of Issue	Date of Expiry
Cure Children's Hospital	AEC/PU/1182/02	16/08/2017	15/08/2018
UMC-Victoria Hospital	AEC/PU/1226/01	17/08/2017	16/08/2019
Kibuli Muslim Hospital	AEC/PU/1030/02	23/08/2017	22/08/2019
Kibuli Muslim Hospital	AEC/PU/1238/01	23/08/2017	22/08/2019
Pearl Diagnostic Centre	AEC/PU/1221/01	25/08/2017	24/08/2019
Uganda Revenue Authority	AEC/PU/1010/04	08/09/2017	07/09/2019
Civicon (U) Ltd.	AEC/PU/1446	08/09/2017	07/09/2018
Galilee Community General Hospital	AEC/PU/1447	08/09/2017	07/09/2019
Bethesda Hospital Soroti Ltd	AEC/PU/1448	08/09/2017	07/09/2019
Ecos Medical Foundation	AEC/PU/1195/02	08/09/2017	07/09/2018
Divine Will Diagnostic Imaging Centre	AEC/PU/1215/01	11/09/2017	10/09/2019
Universal Health Care Nursing Home	AEC/PU/1222/01	08/09/2017	07/09/2019
China Railway No.3 Engineering group Co Ltd.	AEC/PU/1211/01	08/09/2017	07/09/2019
Iran Uganda Medical Centre	AEC/PU/1449	14/09/2017	13/09/2019
Zedex Imaging Centre	AEC/PU/1029/02	15/09/2017	24/09/2019
Savannah Sunrise Clinic (SAS)	AEC/PU/1236/01	25/09/2017	24/09/2019
Crown Beverages Limited	AEC/PU/1002/03	27/09/2017	26/09/2019
Entebbe Handling Services	AEC/PU/1225/01	27/09/2017	26/09/2019
Kampala Independent Hospital	AEC/PU/1231/01	02/10/2017	01/10/2019
Mid-town Imaging Centre	AEC/PU/1235/01	03/10/2017	02/10/2019
Nakasero Hospital	AEC/PU/1108/03	03/10/2017	02/10/2018
Nakasero Hospital	AEC/PU/1191/01	03/10/2017	02/10/2019
Angal St. Luke Hospital	AEC/PU/1501	03/10/2017	02/10/2019
Doctor's Plaza Nsambya	AEC/PU/1093/02	03/10/2017	02/10/2019
COWI Uganda Ltd	AEC/PU/1230/01	03/10/2017	02/10/2019
Kyotera Medical Centre	AEC/PU/1502	10/10/2017	09/10/2019
Busaru Health Centre iv	AEC/PU/1224/01	13/10/21017	12/10/2019
Mount Elgon Hospital	AEC/PU/1504	13/10/2017	12/10/2018

Name of Facility	License Number	Date of Issue	Date of Expiry
Kabarole Hospital	AEC/PU/1192/01	13/10/2017	12/10/2019
Lira Medical Centre	AEC/PU/1207/01	13/10/2017	12/10/2019
Fort portal Regional Referral Hospital	AEC/PU/1171/01	13/10/2017	12/10/2019
Fort portal Regional Referral Hospital	AEC/PU/1172/01	13/10/2017	12/10/2018
Fort portal Regional Referral Hospital	AEC/PU/1503	13/10/2017	12/10/2019
Kampala Imaging Centre-Bombo	AEC/PU/1045/01	13/10/2017	12/10/2019
Arua Medical and Radiology Centre	AEC/PU/1205/01	13/10/2017	12/10/2019
Rhema Medical Centre-Paidaha	AEC/PU/1206/01	12/10/2017	11/10/2019
Rhema Medical Centre-Yumbe	AEC/PU/1506	13/10/2017	12/10/2019
Rhema Medical Centre-Koboko	AEC/PU/1208/01	13/10/2017	12/10/2019
Civicon (U) Ltd	AEC/PU/1507	06/11/2017	05/11/2019
Nebbi General Hospital	AEC/PU/1508	31/10/2017	30/10/2019
Nile International Hospital-Jinja	AEC/PU/1362/01	30/10/2017	30/10/2018
Uganda Cancer Instiute	AEC/PU/1509	03/11/2017	02/11/2018
Kawolo Hospital	AEC/PU/1510	08/11/2017	07/11/2019
Mayanja Memorial Hospital	AEC/PU/1078/04	15/11/2017	14/11/2018
Makerere University Case Western Research University (MU-CWRU)	AEC/PU/1512	08/11/2017	07/11/2019
Family Care Clinic Arua	AEC/PU/1218/01	10/11/2017	09/11/2019
Alpha Imaging and Diagnostic Centre	AEC/PU/1513	10/11/2017	09/11/2019
Kitovu Hospital	AEC/PU/1511	14/11/2017	13/11/2019
Kitovu Hospital	AEC/PU/1514	14/11/2017	13/11/2018
Adjumani General Hospital	AEC/PU/1515	17/11/2017	16/11/2019
People's Medical Centre	AEC/PU/1516	20/11/2017	19/11/2019
Dr. Ronald Batta Memorial Hospital	AEC/PU/1518	24/11/2017	23/11/2019
Kibuli Muslim Hospital	AEC/PU/1517	24/11/2017	23/11/2018
Bank of Uganda Clinic	AEC/PU/1252/01	06/12/2017	05/12/2019
Kiryandongo General Hospital	AEC/PU/1520	06/12/2017	05/12/2019
Lira Regional Referral Hospital	AEC/PU/1125/02	06/12/2017	05/12/2018

Name of Facility	License Number	Date of Issue	Date of Expiry
Kasese Community Health and Education Foundation	AEC/PU/1220/01	07/12/2017	06/12/2019
Doctor's Clinic Hoima	AEC/PU/1062/01	07/12/2017	06/12/2019
St. Francis Hospital Nsambya	AEC/PU/1237/02	07/12/2017	06/12/2018
Ultima-Trauma and Orthopaedic Centre	AEC/PU/1119/03	15/12/2017	14/12/2018
Doctor's Hospital Seguku	AEC/PU/1070/02	12/12/2017	11/12/2019
City Medicals Centre	AEC/PU/1076/02	18/12/2017	17/12/2019
Jinja Regional Referral Hospital	AEC/PU/1291/01	18/12/2017	17/12/2018
St. Stephen's Hospital Mpererwe	AEC/PU/1505	18/12/2017	17/12/2019
Bugolobi Hospital Centre	AEC/PU/1258/01	18/12/2017	17/12/2019
Reynolds Construction Company (RCC)	AEC/PU/1099/02	18/12/2017	17/12/2019
Kam Medical and Diagnostic Centre	AEC/PU/1256/01	22/12/2017	21/12/2019
St. Mary's Hospital Lacor	AEC/PU/1107/02	19/12/2017	18/12/2019
Kabalenga Medical Centre	AEC/PU/1521	28/12/2017	27/12/2019
Hima Cement Hospital	AEC/PU/1523	29/12/2017	28/12/2019
Mu-Jhu Research Collaborations	AEC/PU/1100/02	29/12/2017	28/12/2019
Case Hospital	AEC/PU/1254/01	29/12/2017	28/12/2019
Case Hospital	AEC/PU/1101/04	29/12/2017	28/12/2019
Norvik Hospital	AEC/PU/1150/02	29/12/2017	28/12/2018

Appendix 2: Petroleum

2.1: Compiled Oil Marketing Company (OMC) imports for 2017

Omc	Jan	Feb	Mar	Apr	May	Jun	Jul	Aug	Sep	Oct	Nov	Dec	Total	% Market share	Square of mkt share
Vivo Energy (U) Ltd	28,817,613	24,827,174	24,928,205	25,587,400	27,458,819	27,584,516	35,430,524	31,130,454	31840427	30,054,898	25,089,226	32,637,611	345,386,866	18.22	331.97
Total Uganda Ltd	22,921,962	19,817,017	22,704,701	23,232,985	22,402,030	23,530,431	20,328,130	18,939,029	19,620,136	18,923,510	22,576,983	19,534,392	254,531,305	13.43	180.29
Nile Energy Limited	13,882,870	13,503,462	12,552,858	12,592,468	13,090,461	10,617,498	17,004,379	15,676,553	17308426	14,565,621	16,520,470	13,810,399	171,125,465	9.03	81.49
Stabex Petroleum	11,702,532	12,057,752	12,470,516	10,005,889	10,718,479	9,864,580	10,792,838	11,265,804	10,098,594	7,607,632	12,802,919	11,187,194	130,574,729	6.89	47.45
Don (U Ltd	4,043,657	4,181,792	5,477,025	7,549,784	7,087,510	8,411,563	8,016,143	8,137,304	7,500,816	5,183,081	5,660,539	5,378,232	76,627,447	4.04	16.34
Hass Petroleum (U) Ltd	7,349,706	5,880,783	5,886,846	7,086,837	7,838,297	5,088,430	5,119,241	4,279,166	8,285,021	6,822,172	4,073,725	7,910,412	75,620,635	3.99	15.91
Oryx Oil (U) Ltd	6,864,313	4,483,400	4,090,657	4,971,877	4,861,701	4,745,132	8,268,767	5,909,233	4,789,828	4,247,181	6,290,586	6,680,606	66,203,281	3.49	12.20
Petrocity Enterprises Uganda	6,185,062	4,132,340	4,415,121	4,220,430	5,100,921	4,396,400	4,825,007	4,341,089	4,000,231	2,840,789	3,771,859	4,535,340	52,764,590	2.78	7.75
Moil Uganda Limited	4,311,353	4,890,154	4,810,722	4,012,297	3,985,880	4,105,410	3,069,423	3,957,180	3,530,063	3,619,636	4,655,011	3,849,728	48,796,858	2.57	6.63
Mount Meru Petroleum (U) Ltd	3,204,074	3,292,759	4,106,879	3,565,719	4,449,682	5,107,376	3,735,526	5,969,181	4,724,535	2,664,707	3,296,620	3,712,188	47,829,247	2.52	6.37
Petro Uganda Limited	4,259,566	3,050,471	4,027,601	4,395,889	3,758,892	3,156,998	4,395,618	4,771,143	3,945,113	3,300,506	4,106,696	4,029,111	47,197,603	2.49	6.20
Kobil Uganda Ltd	4,083,591	3,289,895	4,403,419	3,899,821	3,738,354	1,157,981	3,997,253	4,400,559	4,383,307	3,833,445	3,106,568	3,777,823	44,072,016	2.32	5.41

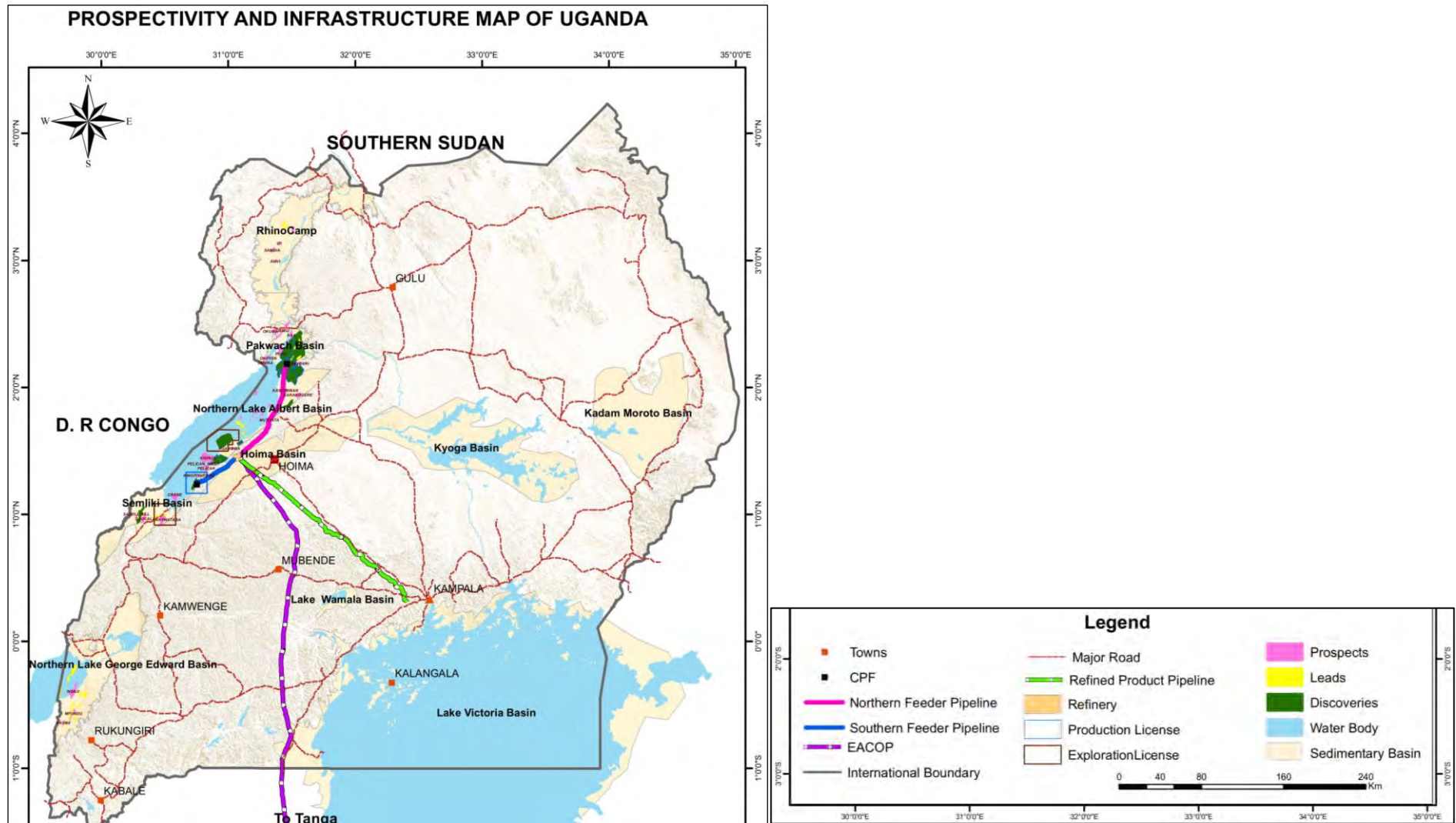
Omc	Jan	Feb	Mar	Apr	May	Jun	Jul	Aug	Sep	Oct	Nov	Dec	Total	% Market share	Square of mkt share
City Oil Ltd	2,730,671	2,763,350	3,001,636	3,451,289	4,669,920	2,983,211	3,803,015	3,125,909	3,958,643	3,576,656	3,722,932	5,726,296	43,513,529	2.30	5.27
One Petroleum (U) Limited	457,709	1,256,148	2,775,914	3,108,504		352,260	4,616,947	11,006,392	5,693,232	2,766,887	5,174,778	4,441,869	41,650,639	2.20	4.83
Bakri	2,874,299	3,512,078	5,416,705	2,987,457	2,154,281	4,058,975	2,445,012	2,970,920	3,490,693	3,401,769	4,455,402	3,808,648	41,576,240	2.19	4.81
Gapco Uganda Ltd	4,044,283	3,129,921	2,673,670	4,473,095	3,036,513	3,356,489	3,320,962	2,857,748	3,796,710	2,794,643	3,546,058	3,219,979	40,250,070	2.12	4.51
Mogas	2,608,519	3,868,882	3,627,605	3,708,639	3,784,925	3,257,708	3,848,435	3,359,780	2,839,029	4,254,942	2,689,316	2,307,421	40,155,203	2.12	4.49
Ainushamsi Energy (U) Ltd	3,458,301	4,882,104	2,732,251	3,708,021	2,543,635	1,552,762	1,312,757	1,158,268	1,278,221	922,415	1,692,778	2,611,594	27,853,107	1.47	2.16
Libya Oil Uganda	946,794	1,905,644	1,141,999	1,477,244	2,957,515	1,703,715	3,185,054	1,716,354	3,177,089	817,632	2,447,634	2,537,269	24,013,943	1.27	1.60
Regnol Oil Ltd	2,202,320	1,885,039	2,621,141	1,993,941	1,974,505	2,580,748	2,006,026	1,767,536	1,362,414	1,722,043	1,621,766	2,155,543	23,893,022	1.26	1.59
Texas Energy Ltd	1,706,323	2,423,383	675,915	2,598,138	1,772,287	2,247,808	2,234,384	3,000,022	2,217,574	1,720,973	2,246,866	694,231	23,537,904	1.24	1.54
Olympic Petroleum	1,727,590	1,379,699	2,146,685	1,949,755	2,456,789	1,875,091	1,646,675	1,309,187	1,511,789	1,390,959	2,024,624	2,606,459	22,025,302	1.16	1.35
Tosha (U) Ltd	1,881,702	1,495,581	1,774,044	1,474,133	1,182,601	1,197,615	1,531,073	1,832,222	1,377,663	1,605,660	1,334,025	2,528,135	19,214,454	1.01	1.03
Europet Ltd	837,983	897,178	633,348	630,973	1,620,380	1,417,650	2,053,129	2,122,412	2,507,145	1,467,472	2,098,037	2,141,949	18,427,656	0.97	0.95
Net Gas Energy(U) Limited	2,533,525	1,888,278	1,584,836	1,686,317	1,431,277	1,355,222	1,358,604	1,372,290	1,384,437	345,753	1,260,158	508,025	16,708,721	0.88	0.78
Riva Petroleum Uganda	1,397,800	1,184,809	1,188,969	1,244,217	1,483,064	1,076,371	1,257,660	1,299,030	1,102,484	1,036,920	967,664	1,559,816	14,798,804	0.78	0.61
Hared Petroleum Ltd	1,424,187	1,787,314	1,371,361	984,771	959,775	1,018,142	553,349	1,334,930	1,303,123	1,056,324	1,034,088	1,291,700	14,119,064	0.74	0.55

Omc	Jan	Feb	Mar	Apr	May	Jun	Jul	Aug	Sep	Oct	Nov	Dec	Total	% Market share	Square of mkt share
Oil Energy (U) Ltd	1,099,114	742,864	1,036,045	658,343	1,091,842	963,336	1,146,038	1,257,330	1,037,658	1,672,617	1,229,361	1,699,851	13,634,399	0.72	0.52
Oil Com Petroleum Ltd	744,691	1,007,953	912,964	981,172	792,511	950,708	1,154,545	940,577	774,987	713,824	643,841	1,050,278	10,668,052	0.56	0.32
Ilade Oil Company Limited	546,826	855,192	573,408	952,434	599,287	869,936	1,259,468	695,294	1,346,442	910,004	566,645	454,650	9,629,586	0.51	0.26
Ocean Energy (U) Ltd	707,660	610,651	448,865	541,289	558,854	597,587	812,311	558,370	863,549	1,080,350	1,071,334	1,305,745	9,156,565	0.48	0.23
Dawson Services Ltd	1,307,702	1,190,477	871,491	932,667	1,002,611	537,951	722,161	734,411		178,704	813,052	214,623	8,505,850	0.45	0.20
Clean Oil	541,954	732,126	1,118,117	639,056	778,988	650,675	1,057,026	899,197	637,424	197,642	682,664	564,058	8,498,927	0.45	0.20
Gasline Petroleum Energy (U) Ltd							34,210	501,155	1,993,534	1,583,739	1,714,514	2,269,293	8,096,445	0.43	0.18
Banoda Ltd	862,396	738,802	1,302,541	452,770	959,986	849,298	529,274	773,180	578,039	617,415		420,260	8,083,962	0.43	0.18
Shire Petroleum	1,281,053	1,051,082	531,252	964,057	1,217,543	1,855,767	798,974			40,929			7,740,656	0.41	0.17
Vitro Energy Limited							307,234	1,100,127	1,484,181	1,718,787	1,064,187	1,554,384	7,228,900	0.38	0.15
Delta Petroleum Ltd	186,046	575,533	246,549			981,901	695,822	186,327		462,353	954,079	717,958	5,006,569	0.26	0.07
Danac Petroleum Limited			66,167				732,441	1,142,897	958,972	613,321	350,989	208,911	4,073,698	0.21	0.05
Eco Petro (U) Ltd				365,615	495,034	610,367	459,014	327,329	279,017	490,169	296,259	261,172	3,583,975	0.19	0.04

Omc	Jan	Feb	Mar	Apr	May	Jun	Jul	Aug	Sep	Oct	Nov	Dec	Total	% Market share	Square of mkt share
Gasco Energy (U) Ltd	92,995	418,720	66,212	242,428	639,462	298,068	149,853		569,210	208,794	142,548		2,828,290	0.15	0.02
Kenafrika Oil Limited	153,056	64,883	200,619	1,000,576	247,427	248,192	351,339				536,643		2,802,735	0.15	0.02
Motogas Uganda Ltd	139,823	135,426	100,638	312,404			209,953	278,340	337,861	340,820	314,283	314,204	2,483,752	0.13	0.02
Aspam Energy (U) Ltd										367,066	877,879	783,746	2,028,691	0.11	0.01
Mopetro	381,705	475,977	217,207	299,812									1,374,701	0.07	0.01
Future Energy Company Ltd	122,739	162,391	166,831	162,752	93,300	105,104	73,146	71,462	75,863			75,975	1,109,562	0.06	0.00
Gogas (U) Ltd	898,799	93,019	19918										1,011,736	0.05	0.00
Chello Petro Station Ltd						30,887	263,244	131,683	154,500	139,998	140,350	64,284	924,947	0.05	0.00
Asharami Uganda Limited								554,897	337,546				892,444	0.05	0.00
Rock Global Oils (U)	105,501	70,197	175,809	124,310	171,930	70,313	105,087						823,147	0.04	0.00
East African Gasoil Uganda Limited		278,999	353,441	67,071									699,511	0.04	0.00
East African Gasoil Uganda Limited	588,480												588,480	0.03	0.00
Gasco United							38,050	540,367					578,417	0.03	0.00

Omc	Jan	Feb	Mar	Apr	May	Jun	Jul	Aug	Sep	Oct	Nov	Dec	Total	% Market share	Square of mkt share
Igal Energy Limited				134,143	167,314	103,293	35,223	32,185					472,158	0.02	0.00
Fuelex Uganda Ltd						300,272							300,272	0.02	0.00
Pam Energy (U) Ltd									237,942				237,942	0.01	0.00
Eco Oil (U) Ltd	53,492			63,136									116,628	0.01	0.00
Precision Energy Ltd								34,345					34,345	0.00	0.00
Total	158,218,845	146,870,699	151,648,703	155,491,925	155,334,582	147,823,737	171,090,343	169,769,169	168,693,466	143,880,758	159,665,955	167,141,365	1,895,683,040	100.00%	756.71

2.2: Prospective and infrastructure map of Uganda for oil and gas



Appendix 3: Minerals

3.1: Monthly Mineral Production in Tonnes (2017)

Mineral	Jan	Feb	Mar	Apr	May	Jun	Jul	Aug	Sep	Oct	Nov	Dec	Q1	Q2	Q3	Q4	Total
Limestone	81849.24	83356.9	137646.1	135991.6	111550.2	97264.67	86131.74	104097.2	91142.08	99794.61	105934.4	97166.8	302852.3	344806.4	281371	302895.8	1,231,925.50
Pozollana	85047.26	47932.38	53871.21	64040.34	68223.84	82549.22	64669.77	63016.95	55791.14	74288.38	59828.01	73305.36	186850.9	214813.4	183477.9	207421.8	792,563.86
Gold	0.000516	0.000557	0.00056	0.000242	0.0002	0.000261	0.000337	0.000218	0.000265	0.000127	0.000237	0.000333	0.001634	0.000703	0.00082	0.000697	0.0039
Vermiculite	270.6	0	0	1351.9	995.5	195.6	358.6	947.1	0	0	0	0	270.6	2543	1305.7	0	4,119.30
Wolfram	19.35	0	12.15	6.5	17.8	11.9	10.15	0	0	0	0	0	31.5	36.2	10.15	0	77.85
Syenitic Aggregate	8011.46	6920.24	7784.28	7430.44	11444.72	9367.88	10253.88	8326.58	6395.56	5190.52	6395.56	6117.79	22715.98	28243.04	24976.02	17703.87	93,638.91
Kaolin	7085.18	11383.76	12656.61	0	0	10922.19	10350.75	508.94	2409.14	0	0	0	31125.55	10922.19	13268.83	0	55,316.57
Iron Ore	510	500	510	500	200	0	100	0	0	0	0	0	1520	700	100	0	2,320.00
Granite	0	0	0	0	0	0	0	0	0	21	20	19	0	0	0	60	60
Coltan (30% Purity)	1.012	1.755	1.87	1.5	0.5	0.8	0.9	0.7	0.5	1.15	0.25	0.25	4.637	2.8	2.1	1.65	11.19
Tin (75% Purity)	4.145	3.91	3.845	3.563	4.872	8.868	6.75	9.279	11.305	10.867	11.215	9.238	11.9	17.303	27.334	31.32	87.86

3.2: NTR assessed and collected

Details of NTR	Amount (UGX)			Total Amount (UGX)
January – March 2017				
	January	February	March	
Prospecting license fees	3,500,000	7,000,000	2,000,000	12,500,000
EL fees and Rents	46,350,000	64,025,363	44,950,000	108,975,363
Location fees and rents	2,800,000	2,000,000	1,600,000	6,400,000
ML/SML fees and rents	58,600,000	220,100,000	0	278,700,000
Mineral Dealers license fees	33,500,000	51,000,000	40,000,000	124,500,000
Retention license fees	0	0	1,000,000	1,000,000
Royalties	307,999,034	286,727,206	10,900,364	605,626,604
Blasting Certificate fees	0	2,500,000	0	2,500,000
Total	406,399,034	633,352,569	100,450,364	1,140,201,967
April - June 2017				
	April	May	June	Total
Prospecting license fees	5,000,000	6,500,000	10,000,000	21,500,000
EL fees and Rents	47,500,000	54,960,000	70,400,000	172,860,000
Location fees and rents	13,100,000	16,500,000	2,400,000	32,000,000
ML/SML fees and rents	17,640,000	518,200,000	0	535,840,000
Mineral Dealers license fees	36,000,000	37,000,000	5,500,000	78,500,000
Retention license fees	0	5,000,000	0	5,000,000
Royalties	327,207,122	525,390,612	1,847,706,203	2,700,303,937
Import Fees	0	0	0	0
Goldsmith license	0	0	2,000,000	2,000,000

Details of NTR		Amount (UGX)		Total Amount (UGX)
Registration fees and copies	-	1,100,000	400,000	-
publications/maps	325,620	-	-	-
Blasting	500,000	0	500,000	500,000
Total	447,272,742	1,164,650,612	1,938,906,203	3,548,503,937
July – September 2017				
	July	August	September	Total
Prospecting license fees	6,000,000	7,000,000	7,000,000	20,000,000
EL fees and Rents	130,290,000	210,905,000	144,350,000	485,545,000
Location fees and rents	4,800,000	2,500,000	1,600,000	8,900,000
ML/SML fees and rents	0	5,000,000	0	5,000,000
Mineral Dealers license fees	18,000,000	0	12,000,000	30,000,000
Retention license fees	5,000,000	2,000,000	0	7,000,000
Royalties	2,330,298,700	319,078,479	1,954,930,565	4,604,307,744
Total	2,494,388,700	546,483,479	2,119,880,565	5,160,752,744
October-December 2017				
	October	November	December	Total
EL Fees	102,610,000	79,540,000	41,860,000	224,010,000
ML Fees	15,000,000	53,700,000	5,000,000	73,700,000
LL Fees	2,650,000	12,400,000	250,000	15,300,000
RL Fees	4,900,000			4,900,000
MDL Fees	32,000,000	22,000,000	10,000,000	64,000,000
Blasting Certificate	1,000,000		1,000,000	2,000,000
PL Fees	10,000,000	8,500,000	3,500,000	22,000,000

Details of NTR			Amount (UGX)	Total Amount (UGX)
Import Permit Fees		2,468,932		2,468,932
Royalty	901,414,670	1,974,019,711	342,834,690	3,218,269,071
Total	1,069,574,670	2,152,628,643	404,444,690	3,626,648,003
Grand total				13,476,106,651

3.3: Mineral licensing status

Jan-Mar 2017						
Type of License	Status as at 31/12/2016	Granted		Expired		Current as at 31/03/2017
Prospecting License	161	32		39		154
Exploration License	402	5		34		360
Retention License	4	0		0		4
Location License	44	6		3		47
Mining Lease	40	0		0		40
Mineral Dealers*	98	33		0		33
Total	749	76		76		638
April - June 2017						
Type of License	Status as at 31/03/2017	Granted	Renewed	Expired	Revoked	Current as at 30/06/2017
Prospecting License	154	30	N/A	34	0	150
Exploration License	363	10	1	29	1	374
Retention License	4	0	0	0	0	4
Location License	47	2	0	1	0	49
Mining Lease	39	0	0	0	0	39
Mineral Dealers*	46	30	N/A	0	0	76
Total	808	72	8	64	1	692
July-September 2017						
Type of License	Status as at 30/06/2017	Granted	Renewed	Expired	Revoked	Current as at 30/09/2017
Prospecting License	150	35	N/A	35	0	150
Exploration License	374	12	6	28	0	365
Retention License	4	0	0	0	0	4
Location License	70	1	2	6	0	71

Mining Lease	39	0	0	0	0	39
Mineral Dealers*	79	7	N/A	0	0	86
Total	695	55	8	69	0	715

October-December 2017

Type of License	Status as at 1/10/2017	Granted	Renewed	Expired	Revoked	Current as at 31/12/2017
Exploration License	365	30	7	14	0	375
Retention License	4	0	0	0	0	4
Location License	71	1	0	0	0	71
Mining Lease	39	0	0	0	0	39
Mineral Dealers*	0	16	N/A	0	0	16

**Mineral Dealers License expires on the 31st day of December of the year of issue*

3.4: Titles of Mineral rights as of 31st December 2017

MDL No.	Holder	Date Of Grant	Address	Commodity
0511	Alis Trading (U) Ltd	2 January 2017	Plot No.5 William Street Kampala	Precious Metals
0512	African Gold Refinery Ltd	2 January 2017	Plot M103-M106 Sebugwawo Road Entebbe	Precious Metals
0512	African Gold Refinery Ltd	2 January 2017	Plot M103-M106 Sebugwawo Road Entebbe	Precious Metals
0513	Mazoori Trading Company Ltd	6 January 2017	Kamwokya Mawanda Road	Precious Metals
0515	Aawings Investments Company Ltd	6 January 2017	Bugolobi Spring Roads Village Mall	Precious Metals
0516	Kipande Investments Ltd	9 January 2017	Shop 2 Maluku Round About Mbale	Precious Metals
0517	Mubende Gold Traders And Miners Co-Operative Society Ltd	10 January 2017	Lujinji Kitumbi Mubende District	Precious Metals
0518	Ewamu Holdings Limited	13 January 2017	Plot 12 Luwum Street City Center Complex 3rd Floor	Precious Metals
0519	Nikki Rush Mining Group Ltd	13 January 2017	Plot 2026 Kabalagala (A) House No.1 Ssenyonga Rd	Precious Metals
0520	Nikki Rush Mining Group Ltd	13 January 2017	Plot 2026 Kabalagala (A) House No.1 Ssenyonga Rd	Base Metals
0522	Africas Undergroud Resources Limited	16 January 2017	Plot 55/5 Rubaga Road Kampala	Precious Metals
0525	Ys Goldstone (U) Limited	20 January 2017	Plot 3 Lubowa Estate House No 1c	Precious Metals
0277	Say World Wide (U) Ltd	30 January 2017	P.O Box, 56808 Kampala	Precious Metals
0278	Treasure Highlandd Caves Limited	30 January 2017	P.O Box, 7845 Kampala	Precious Metals
0523	Euro Group Africa Ltd	2 February 2017	Plot 66a Kira Road Kampala, P.O Box, 23525 Kampala	Precious Metals
0286	Ewaku William Kiboko	7 February 2017	P.O Box, 51 Kaberamaido	Industrial Minerals
0287	Trans-Equator Miners (U) Ltd	7 February 2017	Najja Shopping Centre	Precious Metals
0288	Abasi Balinda Transporters Ltd	7 February 2017	P.O Box, 804 Fort-Portal	Industrial Minerals
0289	Metal Testing And Smelting Company Ltd	7 February 2017	P.O Box, 3503 Kampala	Precious Metals
0290	Crown Victoria Ltd	7 February 2017	P.O Box, 4015 Kampala	Precious Metals
0291	Crown Victoria Ltd	7 February 2017	P.O Box, 4015 Kampala	Precious Stones
0292	Byaruhanga William And Family Investment Limited	9 February 2017	P.O Box, 299 Kabale	Base Metals
0293	Strategic Acquisitions Ltd	15 February 2017	P.O Box, 30330 Kampala	Base Metals
0295	Heraeus Smelting Agency Limited	17 February 2017	P.O Box, 21747 Kampala	Precious Metals

MDL No.	Holder	Date Of Grant	Address	Commodity
0296	Motale Resources Limited	21 February 2017	P.O Box, 11189 Kampala	Precious Metals
0297	Sun Disk Ltd	21 February 2017	Serena Hotel Conference Centre Room 246 Kampala	Precious Metals
0298	Sapphire Editions Limited	21 February 2017	P.O Box, 28209 Kampala	Precious Metals
0299	El Samu Gold Trade Cooperation (U) Ltd	21 February 2017	Plot 3 Dundas Road Kolol Courts	Precious Metals
0299	El Samu Gold Trade Cooperation (U) Ltd	21 February 2017	Plot 3 Dundas Road Kolol Courts	Precious Metals
0300	Bedrock Molding Uganda Limited	22 February 2017	Nkkiazi Courts, Plot 1 Acacia Avenue	Precious Metals
0351	Star Jewellers Limited	23 February 2017	Plot 27 William Street Centre Point Building Kampala	Precious Metals
0352	Atinbah Metals Uganda Ltd	23 February 2017	Plot 57 Kira Road Kampala	Base Metals
0353	Adamawa Investments (U) Ltd	24 February 2017	Kabawo Zone Mutundwe Kampala	Precious Metals
0354	Bridgestone Minerals Ltd	24 February 2017	Plot 41 Kasanga Kiwafu	Precious Metals
0355	Core Minerals Geologists Ltd	3 March 2017	Plot 26 Binayomba Road Bugolobi, P.O Box, 35605 Kampala	Precious Metals
0356	Gold Rush Global Company Limited	6 March 2017	Plot 106 Bukoto Street Kamwokya	Precious Metals
0357	Ginorex Minerals International Ltd	7 March 2017	Plot 3 Pilkington Road Nic Building Suite A04	Precious Metals
0358	Labu Minerals And Consulting Ltd	7 March 2017	Plot 34/42 Buziga-Munyonyo	Precious Metals
0359	Moriah International Company Ltd	9 March 2017	Nyabikoni Kabale	Base Metals
0360	Imagine Gold And Minerals Company Ltd	10 March 2017	Plot 41b Luthuli Avenue Bugolobi	Precious Metals
0361	Kaida Import And Export Ltd	13 March 2017	Plot 296 Jinja Road, P.O Box, 4268 Kampala	Base Metals
0362	Roberto Maurizio Calamai	14 March 2017	Plot 449 Middle Income Estate Seeta, P.O Box, 2427 Kampala	Precious Metals
0363	Tororo Cement Limited	14 March 2017	P.O Box 74 Tororo	Industrial Minerals
0365	Mubende Trust Buyers And Traders Association Ltd	15 March 2017	Lujinji Kassanda Mubende District	Precious Metals
0366	David Okiro And Edward Muloosi	22 March 2017	Plot 11 Buzalabuza Close Bugolobi, P.O Box, 4365 Kampala	Precious Metals
0369	Quantum Satis Revival Ltd	28 March 2017	Plot 642 Shrine Drive Road Naalya Estate	Precious Metals
0370	Mafabi Joseph	29 March 2017	Rubaga Kabuusu Market Parking	Industrial Minerals
0371	Laclarz Investment Ltd	31 March 2017	Plot 12mackenzi Road Naguru Kampala	Precious Metals
0372	Klata (U) Limited	4 April 2017	4 Jinja Road, P.O.Box 71985 Kampala	Precious Metals

MDL No.	Holder	Date Of Grant	Address	Commodity
0373	Hima Cement Limited	10 April 2017	P.O Box, 70630 Kampala	Base Metals
0374	Hima Cement Limited	10 April 2017	Twed Towers 6th Floor	Industrial Minerals
0726	Arrm Investments Ltd	13 April 2017	Plot 4 Jinja Road, 5th Floor Social Security Hse	Base Metals
0735	Kibwe Uganda Limited	15 April 2017	P.O.Box 28251 Kampala	Precious Metals
0728	Tricon Mineral Developers Co. Ltd	20 April 2017	Plot 2 Vale Rd Naguru	Base Metals
0729	Rahim Miners And Gold Dealers Ltd	24 April 2017	Plot 20 Bandari Rise Bugolobi	Precious Metals
0730	Consolidated Services Ltd	26 April 2017	Plot 30 Jinja Road, P.O.Box 11515 Kampala	Precious Metals
0731	Dam Gemstones Exports Ltd	26 April 2017	Plot 41 Buziga Road, P.O.Box 5643 Kampala	Precious Metals
0743	Southern Mineral Limited	1 May 2017	Plot 18 Kar Drive, Kololo	Precious Metals
0732	Island Gold Minerals Limited	3 May 2017	Plot 24 Nakasero Road	Precious Metals
0733	Pierre Monde (U) Limited	3 May 2017	Plot 374 Bukasa Road Muyenga	Precious Metals
0732	Island Gold Minerals Limited	3 May 2017	Plot 24 Nakasero Road	Precious Metals
0734	Victoria Best Limied	4 May 2017	Bugolobi Coffe Spring Road	Precious Metals
0737	Kayiwa Ronald	18 May 2017	Najjanankumbi Central Zone, P.O.Box 9246 Kampala	Precious Metals
0738	Gasen Petroleum Company Limited	18 May 2017	Plot 3 Pilkington Road, Nic Road	Precious Metals
0740	Altaleb Holdings Ltd	19 May 2017	Kampala King Fahad	Precious Metals
0741	Eyat Investments Limited	29 May 2017	Plot 10 Bukoto Street, Kamwokya	Precious Metals
0742	East Africa Gold Smith Ltd	30 May 2017	Plot 200 Spring Road	Precious Metals
0736	Solid Precious Arms Limited	5 June 2017	Guardian George Building Plot 67 Spring Rd Bugolobi, P.O.Box 31386 Kampala	Precious Metals
0744	Mwenyi Jamada	8 June 2017	Kamuswahili, Moroto, P.O.Box 34, Mbale	Industrial Minerals
0745	United Investments And Trading Limited	8 June 2017	Akamwesi Complex Nakawa Rm 3b Buyonyi Drive	Precious Metals
0753	Megha Minerals And Mines Limited	10 June 2017	Plot 33/35/37 Kyambogo Road	Base Metals
0746	Custom Mineral Logistics International	12 June 2017	Mpondwe Lubirilwa, P.O.Box 484 Kasese	Precious Metals
0747	Zhong Quan Limited	20 June 2017	P. O. Box 37021, Kampala	Precious Metals
0748	Madini Investments Ltd	21 June 2017	Plot No.-45 Kanjokya Street Kampala	Precious Metals

MDL No.	Holder	Date Of Grant	Address	Commodity
0749	Prec Met Services Limited	26 June 2017	Plot 59 Kiira Rd, Ngari Dtb Kamwokya	Precious Metals
0750	Wako Technical Services Ltd	26 June 2017	Plot 4008 Sebawato Rd, Upper Konge Hill	Industrial Minerals
0751	Ketsia Trading Investment (U) Ltd	27 June 2017	Ntinda Kimera Rd	Precious Metals
0752	K & D Great Lakes Ltd	30 June 2017	Plot 8a, York Terrace Rd Kololo	Precious Metals
	Shri Ram Jewellers	11 July 2017	Shop No. 11, Kisementi Market Kololo Uganda	Precious Metals
0755	Nasseri Said	12 July 2017	Ruhama Road, Ntungamo District	Base Metals
0756	Canary Whafr Limited	14 July 2017	Maguziriwaza Mall, Level 2, Room 2	Precious Metals
0758	Haki Yako Limited	17 July 2017	Arua Municipality	Precious Metals
0759	Zlato Limited	19 July 2017	3rd Floor Unicalo House, Plot 11 Archer Road Kololo	Precious Metals
0763	Rwenzori Agro Company Limited	21 September 2017	Plot 72, Kasese Municipal Council	Industrial Minerals
0764	Nashr Trading And Investments Ltd	29 September 2017	Plot 156 Najanankumbi, Entebbe Road. P.O.Box 6034 Kampala	Precious Metals
0765	Nyabushenyi Twimukye Association Co.Ltd	16 October 2017	Isingiro District. P.O.Box 308 Kampala	Base Metals
0767	X8 Africa Uganda Limited	17 October 2017	Plot 33 Clemet Hill, Road.P.O.Box 10946 Kampala	Precious Metals
0768	Trading Services Logistics(Tsl) Ltd	19 October 2017	Annex Building, Kisozi Complex Kampala Uganda. P.O.Box 7898 Kampala	Industrail Metals
0770	M/S Golden Nest (U) Ltd	23 October 2017	Plot 298, Block 257 Buziga. P.O.Box 10017 Buziga	Precious Metals
0771	M/S Goodwill (U) Ceramics Co. Ltd	23 October 2017	No.1 Liaoshenindustrial Park,Kapeka Nakaseke.P.O.Box 27933 Kampala	Industrail Minerals
0770	M/S Golden Nest (U) Ltd	23 October 2017	Plot 298, Block 257 Buziga. P.O.Box 10017 Buziga	Precious Metals
0776	M/S Simba Gold Refinery Limited	17 November ,2017	Plot 6 Acacia Avenue, 3rd Floor Acacia Plaza	Precious Metals
0766	Goldstar Precious Stones(U) Ltd	17 October,2017	House 24, Tank Hill Road, Muyenga Kampala	Precious Metals
0514	Sultan Imports And Exports Ltd	6 Janaury 2017	Plot 141 Wampewo Gayaza Road	Base Metals

3.5: Value of mineral exports as per permits issued for minerals produced in 2017

Date	Company	Mineral	Origin	Destination	Permit No.	Quantity (KG)	Royalties (UGX)	Gross (UGX)
February 02 2017	KI3R Minerals Limited	Wolfram	Kabale		03244	20000	22,299,971	445,999,422
February 03 2017	Y.S Goldstone (U) Limited	Gold	Mubende		03245	0.781	5,111,397	102,227,942
March 07 2017	Heraeus Smelting Agency Ltd	Gold	Mubende		03247	1	6,650,424	133,008,461
March 07 2017	Trans-Equator Miners Ltd	Gold	Amudat		03248	2	13,775,471	275,509,405
March 10 2017	KI3R Minerals Limited	Wolfram	Kabale		03249	18500	19,820,394	396,407,880
March 16 2017	Kaida Export and Import Limited	Lead	Mukono		03250	25000	9,340,407	186,808,150
March 30 2017	Kaida Export and Import Limited	Lead	Mukono	China	02257	25000	9,340,407	186,808,150
April 20 2017	KI3R Minerals Limited	Wolfram	Kabale	Roterдам	02259	18000	17,219,494	344,389,889
April 27 2017	KI3R Minerals Limited	Tungsten	Kabale	Roterдам	02260	18000	16,455,648	329,112,957
May 12 2017	3T Mining Limited	Coltan	Wakiso	China	02261	6300	8,523,878	170,477,546
May 18 2017	Elsamu Trade Corporation Limited	Gold	Mubende	Viena	02262	0.589	398,816	7,976,308
May 22 2017	Ewamu Holdings Limited	Gold	Mubende	Hongkong	02263	5	33,808,267	676,165,321
May 24 2017	Island Gold Minerals Limited	Gold	Busia	Dubai	02264	1	6,246,021	124,920,403
June 01 2017	KI3R Minerals Limited	Wolfram	Kabale	Toronto	02265	18000	19,649,344	392,986,880
June 01 2017	KI3R Minerals Limited	Wolfram	Kabale	Vietnam	02266	18000	19,121,706	382,434,120
June 02 2017	East Africa Goldsmith Limited	Gold	Mubende	USA	02267	1	6,849,866	136,997,328
June 22 2017	KI3R Minerals Limited	Wolfram	Kabale	Vietnam	02259	18000	17,736,741	354,734,836
July 06 2017	Adamawa Investments (U) Ltd	Gold	Buhweju	America	02269	10000	67,737,516	1,354,750,301
July 12 2017	KI3R Minerals Limited	Wolfram	Kabale	Toronto	02271	18000	14,270,793	285,270,794
July 28 2017	Kamuntu Investments Limited	Iron ore	Kabale	Kenya	02251	3000000	11,250,000	225,000,000
September 12 2017	Consolidated Services Limited	Gold	Buhweju	Dubai	02274	2	15,159,545	303,190,904
September 12 2017	Kamuntu Investments Limited	Iron ore	Rubanda	Kenya	02275	3000000	11,250,000	225,000,000
September 21 2017	Kukasi Investments (U) Ltd	Gold	Busia & Mubende	Dubai	02276	2	14,413,374	288,267,471
October 06 2017	Island Gold Minerals Limited	Gold	Busia	Hongkong	02277	25	173,238,546	3,464,770,918
October 16 2017	Zlato Limited	Gold	Amudat & Nakapiripirit	Russia	02280	0.4978	34,497,393	689,947,868

Date	Company	Mineral	Origin	Destination	Permit No.	Quantity (KG)	Royalties (UGX)	Gross (UGX)
October 23 2017	Morah International Company Ltd	Wolfram	Kabale	Singapore	02282	10000	9,896,058	197,921,179
October 24 2017	Crown Victoria Ltd	Gold			02283	0.413	1,768,474	35,369,488
November 08 2017	Kukasi Investments (U) Ltd	Gold	Kibale	Dubai	02284	3	20,970,961	419,419,215
November 17 2017	Environmental Women in Action for Development	Gold	Busia	UK	02285	1	6,039,108	120,782,169
November 20 2017	Nambajimana Alex	Wolfram	Kisoro	Donaster	02286	18000	26,345,131	529,902,628
November 20 2017	Nambajimana Alex	Wolfram	Kisoro	Donaster	02286	18000	26,345,131	529,902,628
November 20 2017	Island Gold Minerals Limited	Gold	DR Congo		02288	1	1,468,932	
November 23 2017	3T Mining Limited	Tantalite	Wakiso	China	02289	6000	13,116,991	262,339,818
December 18 2017	Ronel Group Limited	Gold	Busia	Dubai	02290	3	20,600,587	412,011,742
December 19 2017	FookMoon Agency Ltd	Gold	Buhweju	Doha	02291	0.1	698,181	13,963,615
TOTAL							701,414,973	14,004,775,736

Appendix 4: Statistics Committee Members of the Energy and Mineral Sector

S/N	Name	Title	Department	Email Address
1	Emmanuel Ajutu	Ag. C / SPPAD (Chairman)	SPPAD	hspu@energy.go.ug
2	Gerald Banaga-Baingi	Assistant Commissioner	SPPAD	g.banagabaingi@energy.go.ug.
3	Isaac Baziwe	Ag. Assistant Commissioner	SPPAD	l.baziwe@energy.go.ug
4	Ian Kisawuzi	Ag. Senior Statistician	SPPAD	ikisawuzi@energy.go.ug
5	Hellen Nakato	Statistician	SPPAD	h.nakato@energy.go.ug
6	Patrick Muhindo	Ag. Senior Economist	SPPAD	p.muhindo@energy.go.ug
7	Paul Basudde	Senior Policy Analyst	SPPAD	p.asudde@energy.go.ug
8	Simon Sebowa	Economist	SPPAD	s.sebow@energy.go.ug
9	Martin Kretschmer	Head GIS Unit	EPD	m.kretschmer@energy.go.ug
10	Michael Ahimbisibwe	Senior Energy Officer	RED	m.ahimbisibwe@energy.go.ug
11	Hatimu Muyanja	Energy Officer	RED	h.muyanja@energy.go.ug
12	Daudi Ahimbisibwe	Petroleum Officer	PSD	d.ahimbisibwe@energy.go.ug
13	Vivienne Sempala	Palynologist	PEDPD	v.sempala@petroleum.go.ug
14	Tugume Robert	Principal Geophysist	PEDPD	r.tugme@petroleum.go.ug
15	Mathias Mugere	Inspector of Mines	GSMD	mmugere@gmail.com.
16	Kennedy J. Okewling	Mining Engineer	GSMD	jkokewling@minerals.go.ug
17	Ritah Nakiryowa	M&E Officer	GIZ	ritah.nakiryowa@giz.de
18	Disan Kiguli	Senior Petroleum Officer	PSD	kiguli@energy.go.ug
19	Spero Byokunda	Principal Petroleum Officer/Quality Assurance	PSD	sperobyokunda@gmail.com
20	Deo Sekyanzi	Senior Radiation Protection Officer	AEC	dsekyanzi@atomiccouncil.go.ug

Quick links to more information

www.energyandminerals.go.ug

www.era.or.ug

www.petroleum.go.ug

www.rea.or.ug

www.ubos.org

www.uedcl.co.ug

www.uetcl.com

www.uganda-mining.go.ug

Published by:

Sectoral Planning and Policy Analysis Department

Ministry of Energy and Mineral Development

Plot No. 29/33 Kampala Road, P.O. Box 7270, Kampala

Tel: +256-414-505942; Fax: +256-414-505941

Email: psmemd@energy.go.ug;

Website: www.energyandminerals.co.ug

September 2018

Copyright © 2018 Ministry of Energy and Mineral Development

The material in this document may be freely reproduced provided due acknowledgement is made to the publisher and source.